



International Association of Penturners

Making This Scalloped Pen

Author: Bob Perez June, 2021

Downloaded from www.penturners.org



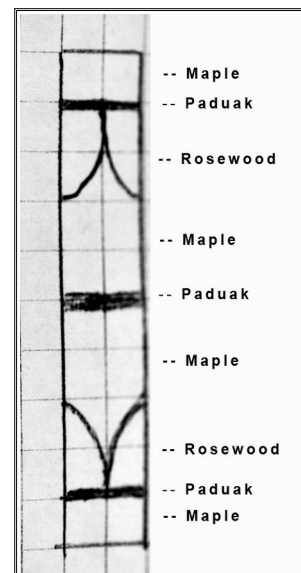
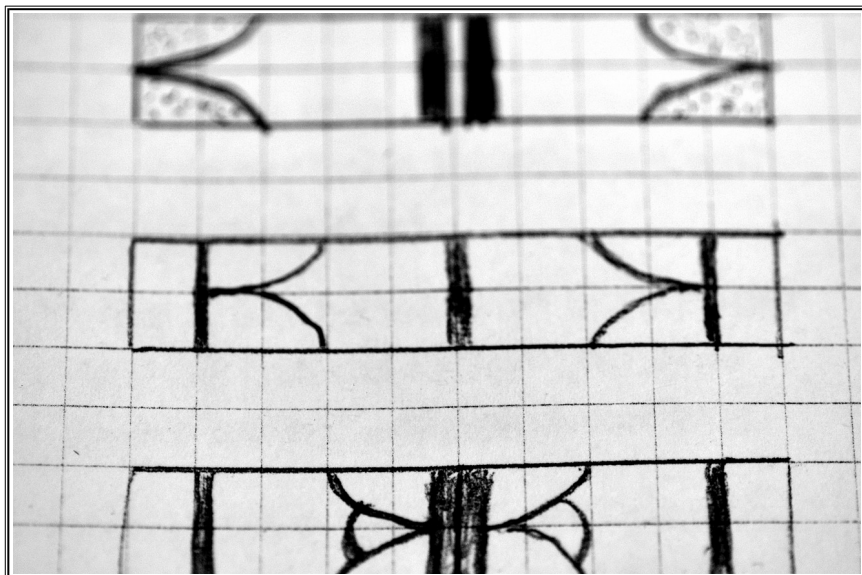
<https://www.facebook.com/bperezcrafts/>

This is the method I used in the making of the pen on the cover.

- To start, I like to draw the design on graph paper, close to actual size.

I do that for 2 reasons:

- To see if the idea i have looks ok as a design
- To avoid creating too much firewood :-)



At this point I make a copy and decide what woods I will use and colour in the copy based on the woods chosen.

(i keep the designs in a binder along with all pen instruction sheets.)

Make sure that your main blank is perfectly square: (the Maple in example above)

If not try squaring it with the band saw

For the scallops:

Rip a blank down the middle lengthwise. In example it would be the rosewood

For the accent bands:

Rip a blank lengthwise about 1/8 inch wide in example it is Paduak

For Aluminum:

The aluminum I use is roofing flashing available at most home improvement stores. I got the 12 inch x 10 foot roll for under \$20. it can make a couple of hundred pens. Cut a couple of strips a touch wider than 1/4 inch.. Sand them lightly to add a tooth for the glue

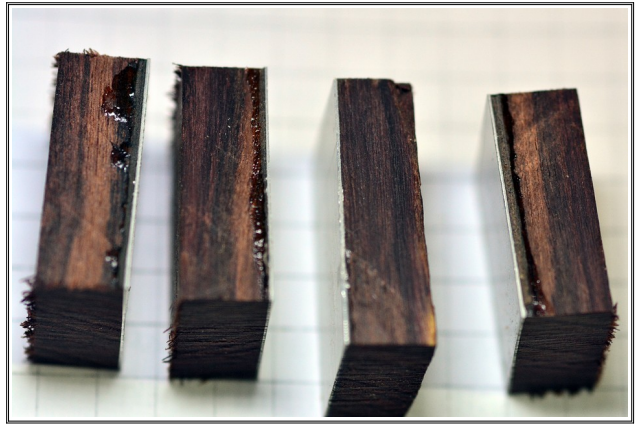
Glue an aluminum strip to one side of the rosewood blank

Glue two strips to either side of the thin paduak blank

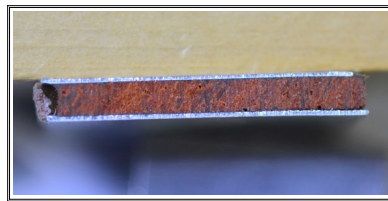
Allow to fully dry

Once Glue is dried:

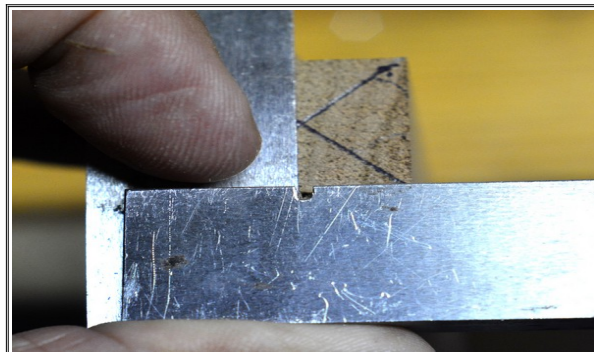
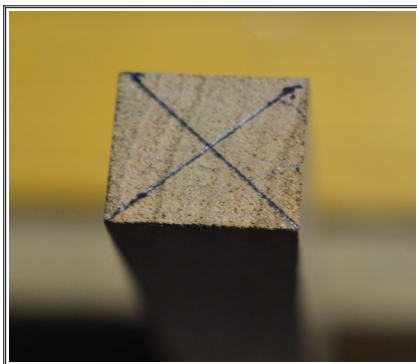
Cut the Rosewood to get 4 pieces 1 inch long.



Cut the Paduak strip to get 3 pieces slightly wider than 3/4 inch

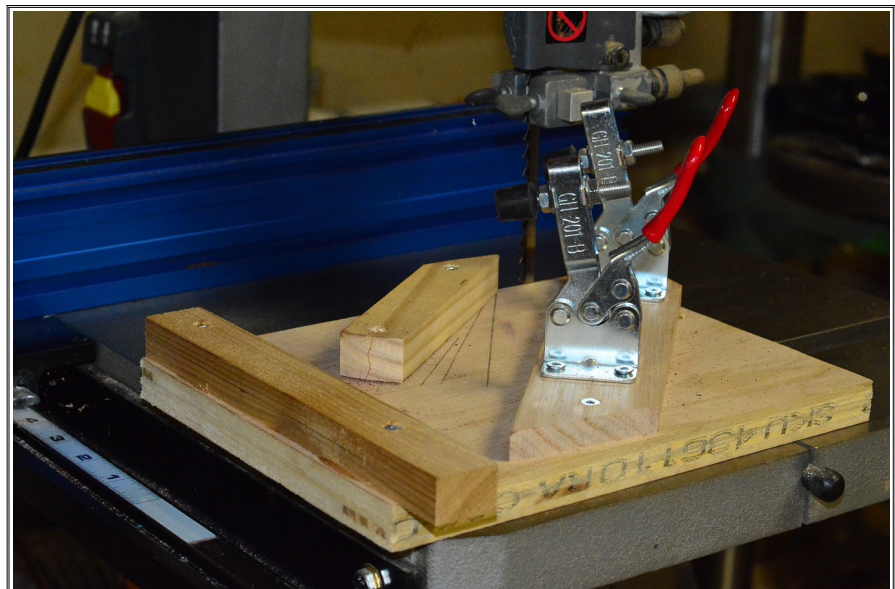


Find the centre of the Main blank: (Maple)
Both sides...



I made this jig for my band saw:

The edge rides next to the blade, I can set a few angles with different screw-in blocks. Did them by eye.



The maple blank centres are aligned with the edge of the jig and I make four cuts.



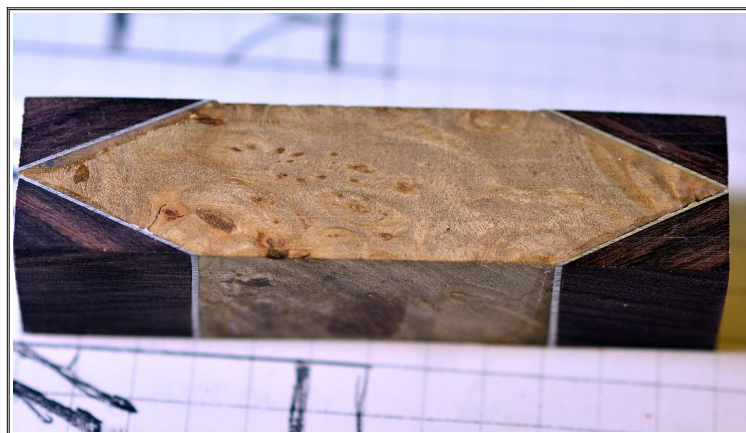
Glue the Rosewood pieces aluminum side in.

Make sure there is
no gap at the tip.

Allow to fully dry.



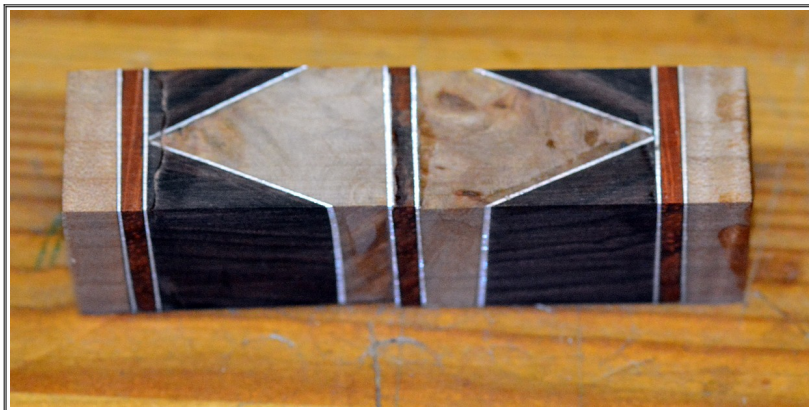
Once glue is dry, I trim and square on the bandsaw and sand to bring it back to square.



I cut a couple of short pieces of maple for the ends allowing about 1/16 for sanding. Glue them to paduak trim and then glue those to the squared blank.

Taking the brass tube from the kit measure how much longer the blank is compared to the tube. Remove that measure from the centre of the blank. Then glue in the centre band of paduak. The would result in the blank being about 1/8 of an inch longer that would allow for sanding.

The final blank should look like this.



Turn using light cuts.

To make a full scallop.. Glue in two of the rosewood pieces on the end. Allow to dry, square and then find the centre again to cut the other sides.

Hope this Helps:

Bob

