



International Association of Penturners

Studies in Segmenting III: Variable Brick Chevron Blank

Author: Mark James June 2019

Downloaded from www.penturners.org



This tutorial builds on a previous IAP Library Article: **Studies in Segmenting II: Chevron Inlay Pen Blank.**

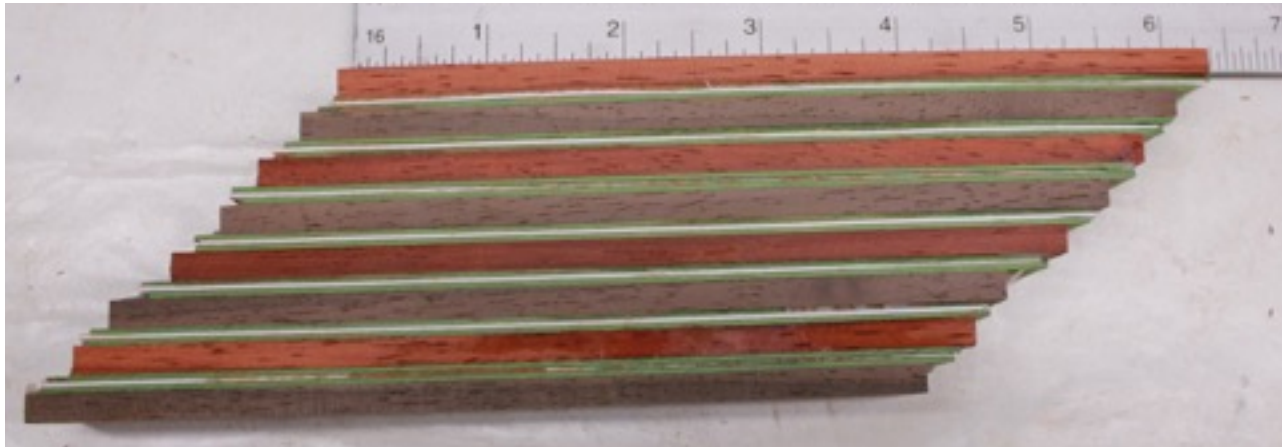
The key difference in how these two pen blanks were constructed is the layers of the initial "Brick." But the appearance of the final pens is striking and allows for a multitude of design modifications.



In the first pen, the layers of the brick were the same size. I call this a Simple Brick.



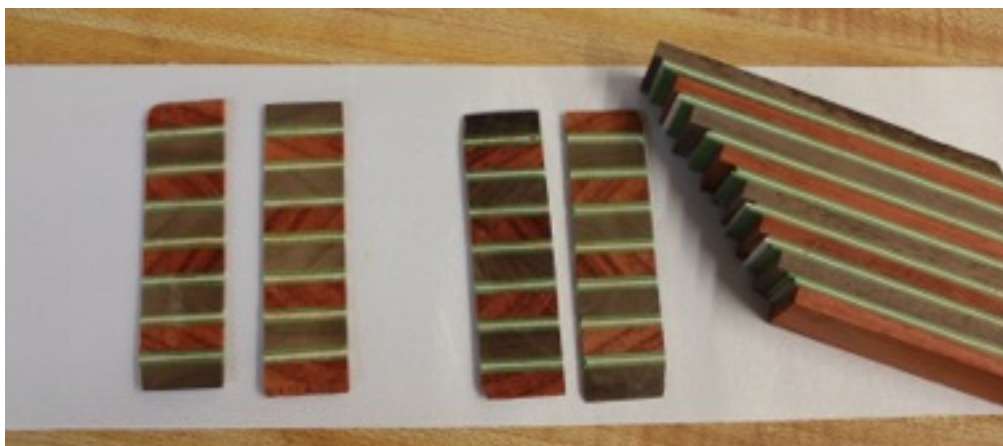
In the second pen, the layers were of different thicknesses, and different colored veneers were also added. I call this a Variable Brick.



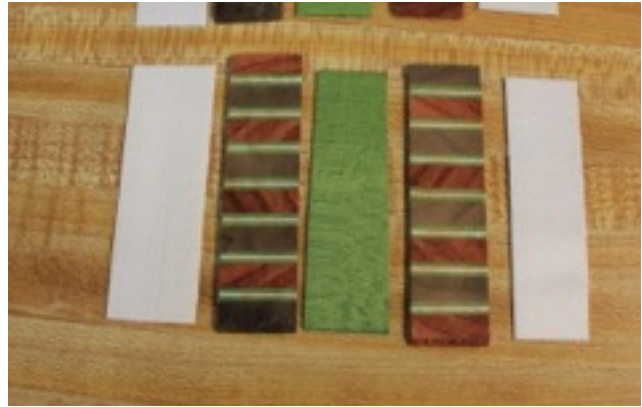
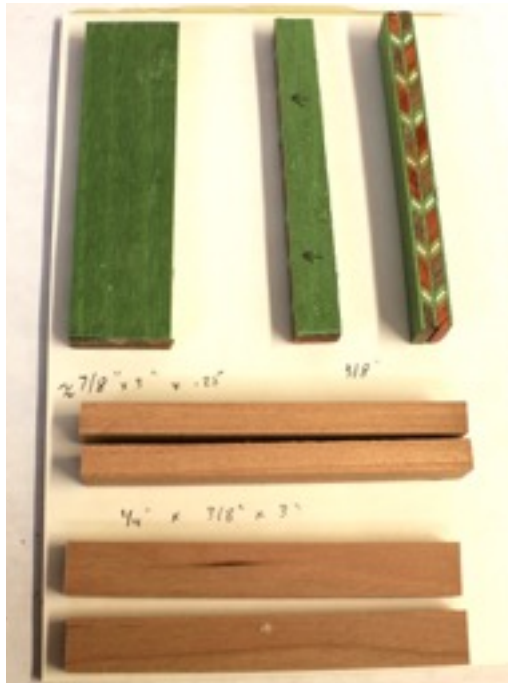
In both examples, the layers that were to be eventually “paired” up, need to be the same thickness. But what that thickness is in actual dimensions is entirely up to your preference. In the above variable brick, the Padauk layers need to be the same dimension; the 3-ply veneers need to be the same dimension; and the walnut layers need to be the same dimension. But the padauk/walnut layers could easily be thicker or thinner, they just need to be uniform for the eventual Chevron to look precise.

(All that follows is similar to the previously mentioned library article). Some of the photos are from different projects and include different color combinations - the process is the important topic).

So after you have constructed your brick, cut your slices



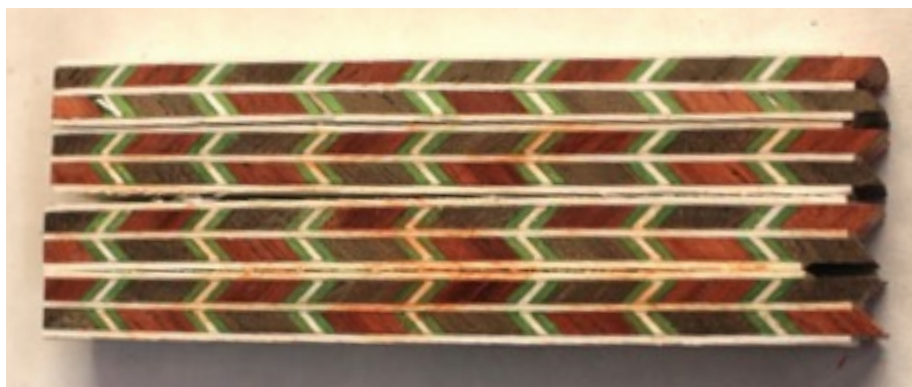
Pair the slices and cut any veneers you want in between.



Glue up the Chevron Layers.



Sand one end of each layer so the patterns match.



Construct the blank with three Chevron Layers (2 halves, 1 full) and four corner pieces.



Carefully mark the ends between the pattern.

Turn the gnarly looking blank round. (The long blank was a request for a "Kitless" application. The initial "Brick" was HUGE.)



Place in a collet to drill an accurate tube hole; or use whatever preferred method you desire. Just be mindful if the hole is off-center, there will be a taper in the design.

At this point, my preferred final steps are to "center" the chevron pattern on the tube, apply end veneers and end caps of equal dimensions, and finish the turning.

