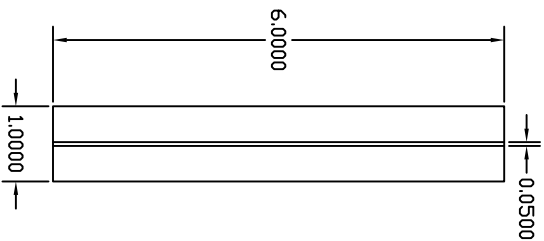
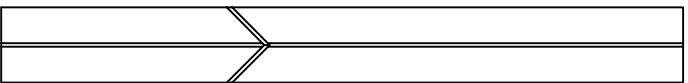


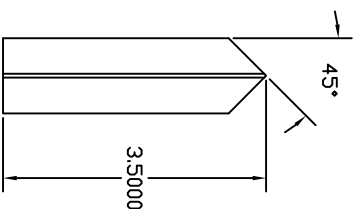
.050 veneer down  
middle



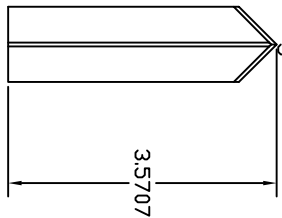
glue together



you can get 2 per blank if  
you're careful and depending  
on pen length



add  
veneer on  
angles

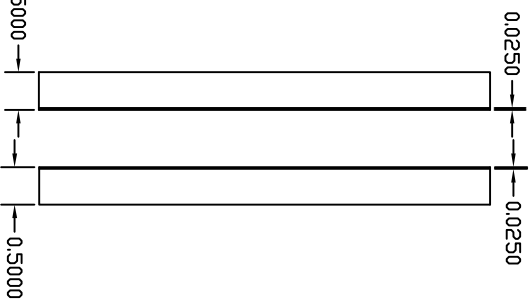


turn on side and cut out arc,  
this will be the peace sign you  
glues into another blank.

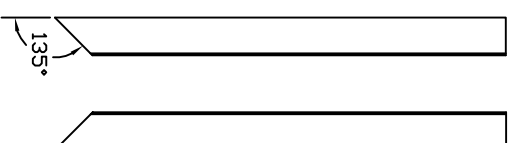


this is where I use  
my jig and again, if  
you're careful you  
can get two per  
blank and I have had  
the most luck cutting  
the arc with the  
peace sign centered.

two pieces with  
veneer at half of  
original



cut at 45  
degrees to  
match original



glue together,  
must be precise

