

Operating Instructions

Wind Chime Designer V 2.0

© 1997, 2006 Greg Phillips



by: Lee Hite

[An Engineering Approach to Wind Chime Design & Build](#)

Introduction:

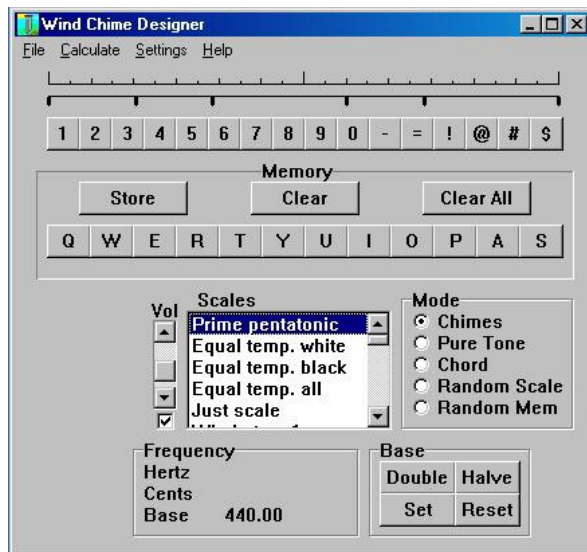
This program is freeware and was written by Greg Phillips* in 1997 with updates authored in 2006. I have received many questions regarding the correct use for this software, and since I cannot locate Greg, I offer this document in answer to the questions. Greg Phillips has not authorized this set of instructions. If anyone knows how to contact Greg, please let me know. Thanks

Installation:

Downloaded the Zip file "Chime32A.zip", unzip and place both files (CHIME32A.EXE and TUNING.DAT) in a folder of your choice. There is no installation routine as the program runs directly by clicking on CHIME32A.EXE.

Features of the program:

- Emulate chimes for a note range between A2 (110 Hz) thru B8 (7,902 Hz) in many different scales (82 in all) more than adequate for chimes.
- Stores a personalized note selection and plays that note selection in a random manner. The program will store your selections until you either clear it or end the session. It will not store note selections from session to session.
- A ratio calculator called "Estimating Tube Lengths"; allows you to use the length measurement for a chime tube of known frequency (known note) and determine the lengths for the remaining chimes in the set.
- The program can produce very accurate frequencies (Pure tones).
- Various tuning scales are included (82 in all)
- Convert cents to ratios, 1200 cents = 2/1 ratio
- Convert ratios to cents, $2/1 = 1200.00$ cents
- Various other Metric to English conversions
- Very small size (fast loading)
- Addition information is inside the program



Program Operation

Notes are played along the top row of the keyboard.

Keys "1234567890-=" play the first 12 notes from the current scale.

The <shift> can be pressed to extend an additional 12 notes! @ # \$ % ^ & * () _ +.

Step 1, Begin by selecting the keyboard scale of interest. "Equal Temp. all" will activate all the keys.

Step 2, Select the octave you want. Adjust the base note up or down by selecting **Double** or **Halve**. The program begins in the C4 octave with A=440 Hz. Remember to turn up the speaker volume control.

Step 3, Play the note of interest

If you want to store a series of notes for playback:

Step 3, Play the note of interest

Step 4, Press Store

Step 5, Select a letter on the second row of keys (Q, W, E, etc.) for storage. Repeat **3, 4, & 5** to select additional notes. A red dot will be placed over the note of choice and a black mark over the storage letter.

Step 6, Make sure the "Chimes" Mode has been selected

Listen to your selections by pressing the appropriate key on the second row of keys, Q, W, E, R, etc. or mouse click your selection.

Once you have selected and stored your notes of choice, you can play them in a random fashion by selecting the **Random Mem** button shown to the right..

Adjust the speed (**Rate**) at which the chimes play.

