

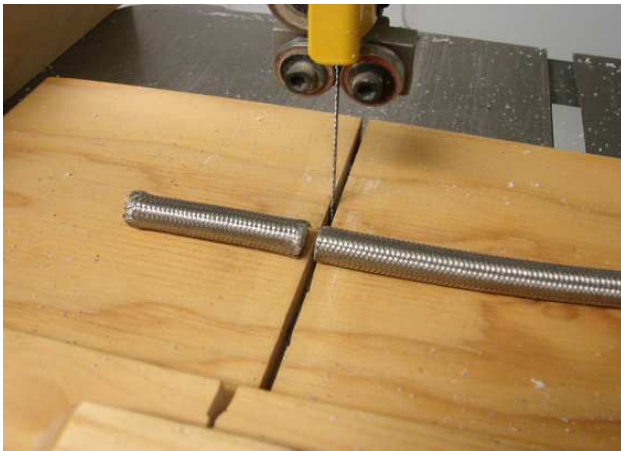
Casting Braided Stainless Steel Pen Blanks

By
Les R. Elm © 2010

The instructions in this tutorial are for making Sierra series Polyester Resin pen blanks using Braided Stainless Steel.

Purchase some 3/8" OD Faucet Connector with Braided Stainless Steel covering at any sales outlet that sells plumbing supplies like Home Depot, Rona or Totem.

- Use a band saw and cut the Stainless Steel to the length of a Sierra brass tube and work the Stainless Steel covering from the inner plastic tubing.



Cut SS Braid Faucet Connector with Bandsaw



Removed SS Braid from Plastic Tubing

- Rough up a Sierra brass tube with 220 grit sand paper and spray paint the tube with TREMCLAD Rust paint. In this case I am using Black and White paint. Insert the painted tube into one end of the braid.



Painted Sierra Brass Tubes



Insert Painted Tube Into SS Cable

- Clamp one end of the cable with a small pair of vise grips and clamp vise grips in a small vise. Center the painted tube in the SS cable and clamp the opposite end with another pair of small vise grips. Pull the SS cable tight and apply some Thin CA to both ends of the SS cable at the ends of the tube and onto the cable that extends past the tube ends.
Wipe any CA that has run to the bottom of the cable.
Hold tension on the SS cable for a couple of minutes until the Thin CA has had time to set.



Holding Tension on the SS Cable

- Trim the ends of the SS cable just proud of the tube ends with a pair of metal shears. The Thin CA applied to the SS Cable that extends past the tube ends will prevent the SS Cable from fraying when trimming.



Trimming SS Cable With Metal Shears

- Both ends of the cable trimmed just proud of the tube ends.



SS Cable Trimmed Just Proud of The Tube End



Sierra SS Cable Blanks Ready For The PR Mold

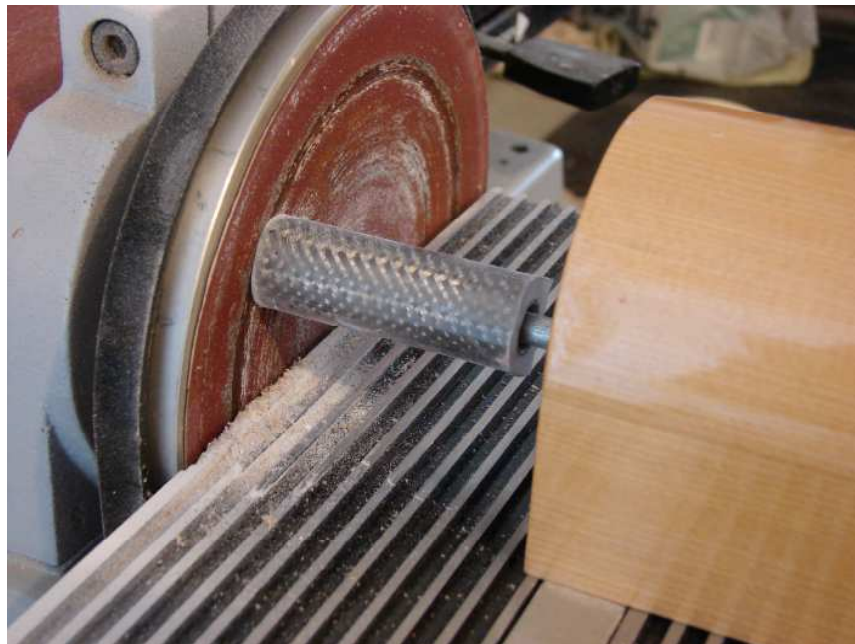
Prepare Casts For Turning:

- Cut casting apart and trim off tabs



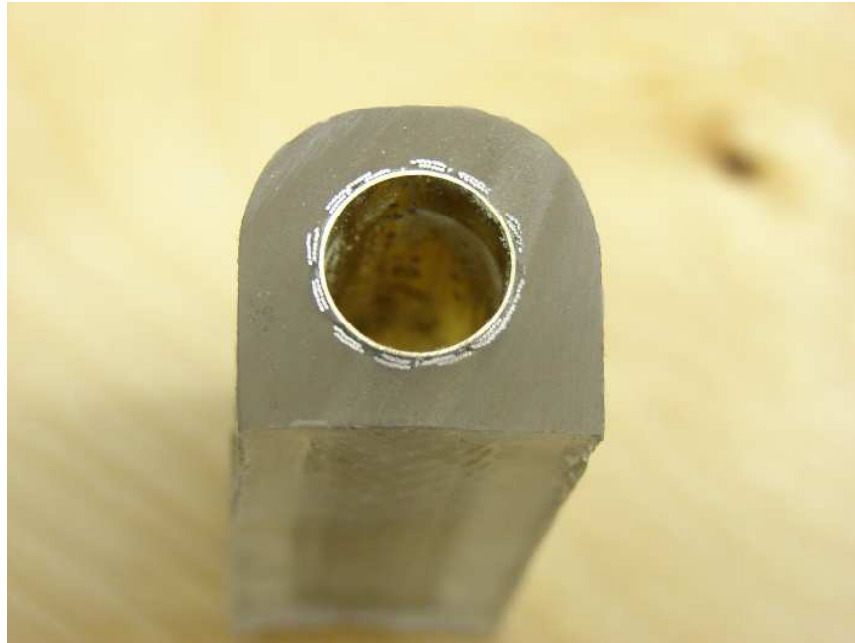
Blanks Separated from Mold Tab

- Square blank ends flush with tube ends.



Squaring and Trimming SS Cable with Tube End

- PR and Stainless Steel Cable ends squared up with brass tube ends



SS Cable Ends Trimmed and Square with Brass

Finished Results

