

# Pen Kit Bushings and Tubes

Revised 7-23-2010

Contributed by: Wayne Racinowski

A.K.A "wracinowski"



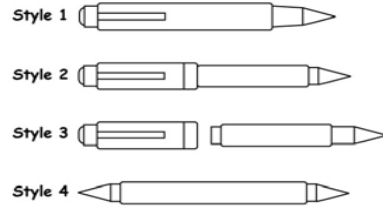
This tutorial was downloaded from

<http://www.penturners.org>

The International Association of Penturners

# Pen Kit References for Bushings and Tubes

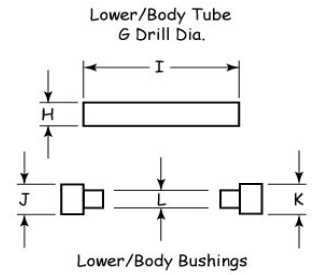
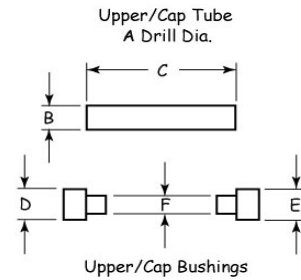
W Racinowski WRACINOWSKI at WI dot RR dot COM Revised 7-23-2010



Cells that are Yellow require dimensions.

Tolerances for:  
2 place Dims is +/- .01  
3 Place Dims is +/- .003

Typical Mandrel Sizes  
A - .247 Dia.  
B - .291 Dia.

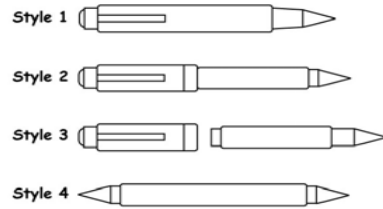


← Revisions or Additions

Pen Kit Supplier	Pen Kit Description Grouped by Styling	Suppliers Bushing Set	Pen Style	Upper / Cap Tube			Upper / Cap Bushings			Lower / Body Tube			Lower / Body Bushing		
				A Drill Dia.	B Dia.	C Length	D Dia.	E Dia.	F Dia.	G Drill Dia.	H Dia.	I Length	J Dia.	K Dia.	L Dia.
Arizona Silhouette	Sierra Twist BP	20A	1	27/64"	0.410	2.21	0.474	0.474	0.381	x	x	x	x	x	x
> Bear Tooth Woods	Sierra Twist BP	20A	1	27/64"	0.410	2.21	0.474	0.474	0.381	x	x	x	x	x	x
Berea	Sierra Twist BP	20A	1	27/64"	0.410	2.21	0.474	0.474	0.381	x	x	x	x	x	x
Craft Supply USA	Apprentice Classica Twist BP	486-2021	1	27/64"	0.410	2.21	0.474	0.474	0.381	x	x	x	x	x	x
Craft Supply USA	Sienna Twist BP	050-4660	1	27/64"	0.410	2.21	0.474	0.474	0.381	x	x	x	x	x	x
> Lee Valley	Sierra Twist BP	88K78.80	1	27/64"	0.410	2.21	0.474	0.474	0.381	x	x	x	x	x	x
> Penn State	Gatsby Twist BP (V2)	PKGABU	1	27/64"	0.410	2.25	0.474	0.474	0.381	x	x	x	x	x	x
Rockler	Sierra Twist BP	30467 or 20A	1	27/64"	0.410	2.21	0.474	0.474	0.381	x	x	x	x	x	x
> William Wood-Write	Sierra Twist BP	60-20A	1	27/64"	0.410	2.21	0.474	0.474	0.381	x	x	x	x	x	x
Woodcraft	Wall Street II Twist BP	146597	1	27/64"	0.410	2.21	0.474	0.474	0.381	x	x	x	x	x	x
Arizona Silhouette	Sierra Button Click BP	20A	1	27/64"	0.410	2.42	0.474	0.474	0.381	x	x	x	x	x	x
> Bear Tooth Woods	Sierra Button Click BP	20A	1	27/64"	0.410	2.42	0.474	0.474	0.381	x	x	x	x	x	x
Berea	Sierra Button Click BP	20A	1	27/64"	0.410	2.42	0.474	0.474	0.381	x	x	x	x	x	x
> Lee Valley	Sierra Button Click BP	88K78.80	1	27/64"	0.410	2.42	0.474	0.474	0.381	x	x	x	x	x	x
Penn State	Gatsby Button Click BP	PKGABU	1	27/64"	0.410	2.25	0.474	0.474	0.381	x	x	x	x	x	x
> William Wood-Write	Sierra Button Click BP	60-20A	1	27/64"	0.410	2.42	0.474	0.474	0.381	x	x	x	x	x	x
Woodcraft	Wall Street II Button Click BP	146597	1	27/64"	0.410	2.42	0.474	0.474	0.381	x	x	x	x	x	x
Arizona Silhouette	Sierra Button Click .7mm Pencil	20A	1	27/64"	0.410	1.76	0.474	0.474	0.381	x	x	x	x	x	x
> Bear Tooth Woods	Sierra Button Click .7mm Pencil	20A	1	27/64"	0.410	1.76	0.474	0.474	0.381	x	x	x	x	x	x
Berea	Sierra Button Click .7mm Pencil	20A	1	27/64"	0.410	1.76	0.474	0.474	0.381	x	x	x	x	x	x
Penn State	Gatsby Button Click .7mm Pencil	PKGABU	1	27/64"	0.410	2.25	0.474	0.474	0.381	x	x	x	x	x	x
> William Wood-Write	Sierra Button Click .7mm Pencil	60-20A	1	27/64"	0.410	1.76	0.474	0.474	0.381	x	x	x	x	x	x
Woodcraft	Wall Street II Button Click .7mm Pencil	146597	1	27/64"	0.410	1.76	0.474	0.474	0.381	x	x	x	x	x	x
Arizona Silhouette	Sierra Vista, Tropical & Circuit Board Twist BP	70A	1	x	0.410	2.21	0.551	0.523	0.381	x	x	x	x	x	x
> Bear Tooth Woods	Sierra Vista & Circuit Board Twist BP	50A	1	x	0.410	2.21	0.551	0.523	0.381	x	x	x	x	x	x
Berea	Sierra Tropical & Circuit Board Twist BP	70A	1	x	0.410	2.21	0.551	0.523	0.381	x	x	x	x	x	x
Rockler	Sierra Circuit Board Twist BP	35696 or 50A	1	x	0.410	2.21	0.551	0.523	0.381	x	x	x	x	x	x
> William Wood-Write	Sierra Vista Circuit Board Twist BP	4366-50A	1	x	0.410	2.21	0.551	0.523	0.381	x	x	x	x	x	x
Woodcraft	Wall Street III, Tropical & Circuit Board Twist BP	147478	1	x	0.410	2.21	0.551	0.523	0.381	x	x	x	x	x	x
> Penn State	Gemini BP	PKGEMBU	1	3/8" or 'V'	0.368	2.81			0.342	x	x	x	x	x	x
> Penn State	Gemini .7mm Pencil	PKGEMBU	1	3/8" or 'V'	0.368	2.81			0.342	x	x	x	x	x	x
> Penn State	Vertex BP	PKFPBU	1	3/8" or 'V'	0.368		0.433	0.433	0.342	x	x	x	x	x	x
Arizona Silhouette	Elegant Beauty Twist BP	20A	1	27/64"	0.410	2.21	0.474	0.474	0.381	x	x	x	x	x	x
> Bear Tooth Woods	Elegant Beauty Sierra Twist BP	20A	1	27/64"	0.410	2.21	0.474	0.474	0.381	x	x	x	x	x	x
Berea	Elegant Beauty Sierra Twist BP	20A	1	27/64"	0.410	2.21	0.474	0.474	0.381	x	x	x	x	x	x
Craft Supply USA	Aero Twist BP	050-4124	1	23/64"	0.347	1.98	0.474	0.474	0.324	x	x	x	x	x	x
> Penn State	Art Deco BP	PKMAJSQBU	1	3/8" or 'V'	0.368		0.495	0.495	0.342	x	x	x	x	x	x
> Penn State	Majestic Squire Twist BP	PKMAJSQBU	1	3/8" or 'V'	0.368	2.01	0.495	0.495	0.342	x	x	x	x	x	x

# Pen Kit References for Bushings and Tubes

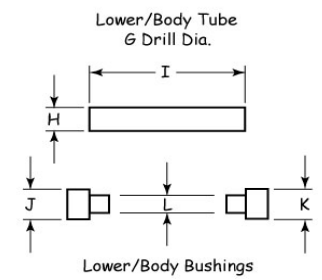
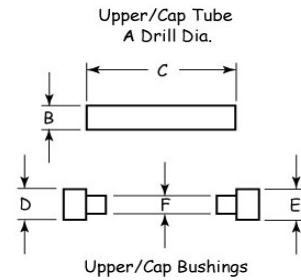
W Racinowski WRACINOWSKI at WI dot RR dot COM Revised 7-23-2010



Cells that are Yellow require dimensions.

Tolerances for:  
2 place Dims is +/- .01  
3 Place Dims is +/- .003

Typical Mandrel Sizes  
A - .247 Dia.  
B - .291 Dia.

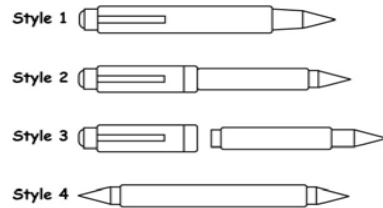


← Revisions or Additions

Pen Kit Supplier	Pen Kit Description Grouped by Styling	Suppliers Bushing Set	Pen Style	Upper / Cap Tube			Upper / Cap Bushings			Lower / Body Tube			Lower / Body Bushing		
				A Drill Dia.	B Dia.	C Length	D Dia.	E Dia.	F Dia.	G Drill Dia.	H Dia.	I Length	J Dia.	K Dia.	L Dia.
> Penn State	Diva BP	PKCHPENBU	1	3/8" or 'V'	0.368	2.12	0.495	0.495	0.342	x	x	x	x	x	x
Rockler	Elegant Sierra Twist BP	30467 or 20A	1	27/64"	0.410	2.21	0.474	0.474	0.381	x	x	x	x	x	x
> William Wood-Write	Elegant Beauty Sierra Twist BP	60-20A	1	27/64"	0.410	2.21	0.474	0.474	0.381	x	x	x	x	x	x
Woodcraft	Wall Street Elegant Twist BP	146597	1	27/64"	0.410	2.21	0.474	0.474	0.381	x	x	x	x	x	x
> Arizona Silhouette	Elegant Beauty Sierra Click BP	20A	1	27/64"	0.410	1.89	0.474	0.474	0.381	x	x	x	x	x	x
> Bear Tooth Woods	Elegant Beauty Sierra Click BP	20A	1	27/64"	0.410	1.89	0.474	0.474	0.381	x	x	x	x	x	x
> Berea	Elegant Beauty Sierra Click BP	20A	1	27/64"	0.410	1.89	0.474	0.474	0.381	x	x	x	x	x	x
> William Wood-Write	Elegant Beauty Sierra Click BP	60-20A	1	27/64"	0.410	1.89	0.474	0.474	0.381	x	x	x	x	x	x
> Woodcraft	Wall Street II Elegant Click BP	146597	1	27/64"	0.410	1.89	0.474	0.474	0.381	x	x	x	x	x	x
Craft Supply USA	Broker Twist BP	050-4446	1	'U'	0.358	3.00	0.425	0.425	0.335	x	x	x	x	x	x
Penn State	CEO Twist BP	PKCEOBU	1	'U'	0.358	3.00			0.335	x	x	x	x	x	x
Woodcraft	Wall Street (I) Twist BP (Old)	140101	1	'U'	0.358	3.00	0.425	0.425	0.335	x	x	x	x	x	x
Arizona Silhouette	Carbara Twist BP	16A	1	3/8" or 'V'	0.368	2.84	0.510	0.452	0.342	x	x	x	x	x	x
> Bear Tooth Woods	Carbara Twist BP	16A	1	3/8" or 'V'	0.368	2.84	0.510	0.452	0.342	x	x	x	x	x	x
Berea	Carbara Twist BP	16A	1	3/8" or 'V'	0.368	2.84	0.510	0.452	0.342	x	x	x	x	x	x
Craft Supply USA	Patriot Twist BP	050-4443	1	3/8" or 'V'	0.368	2.84	0.510	0.452	0.342	x	x	x	x	x	x
Penn State	Polaris Twist BP & .7mm Pencil	PKPOLBU	1	3/8" or 'V'	0.368	2.84	0.495	0.452	0.342	x	x	x	x	x	x
Penn State	Polaris Click BP	PKPOLBU	1	3/8" or 'V'	0.368	2.84	0.495	0.452	0.342	x	x	x	x	x	x
> Rockler	Patriot Twist BP	24842	1	3/8" or 'V'	0.368	2.84	0.510	0.452	0.342	x	x	x	x	x	x
Rockler	Carbara Twist BP	37210	1	3/8" or 'V'	0.368	2.84	0.510	0.452	0.342	x	x	x	x	x	x
> William Wood-Write	Carbara Twist BP	49-16A	1	3/8" or 'V'	0.368	2.84	0.510	0.452	0.342	x	x	x	x	x	x
Woodcraft	Atlas Twist BP	147206	1	3/8" or 'V'	0.368	2.84	0.510	0.452	0.342	x	x	x	x	x	x
Craft Supply USA	Clicker BP	050-4024	1	3/8" or 'V'	0.368	4.11	0.444	0.444	0.342	x	x	x	x	x	x
Craft Supply USA	Clicker .7mm Pencil	050-4024	1	3/8" or 'V'	0.368	4.39	0.444	0.444	0.342	x	x	x	x	x	x
Penn State	Longwood Click BP	PKLONGBU	2	7mm or 'J'	0.268	3.16			0.331	7mm or 'J'	0.268	1.00			x
Penn State	Longwood Click .7mm Pencil	PKLONGBU	2	7mm or 'J'	0.268	2.03 & 1.00			0.331	7mm or 'J'	0.268	1.00			x
> William Wood-Write	Longwood Click BP	6190-84A	1	3/8" or 'V'	0.368	4.11	0.444	0.444	0.342	x	x	x	x	x	x
Arizona Silhouette	Civil War Pen	PKCWBU	1	3/8" or 'V'	0.368	2.88	0.586	0.485	0.345	x	x	x	x	x	x
> Penn State	Civil War Pen	PKCWBU	1	3/8" or 'V'	0.368	2.88	0.586	0.485	0.345	x	x	x	x	x	x
> Bear Tooth Woods	Retro Twist BP	9A	2	11/32" or 'S'	0.338				0.316	11/32" or 'S'	0.338				0.316
Berea	Retro Twist BP (Provincial/Executive)	9A	2	11/32" or 'S'	0.338				0.316	11/32" or 'S'	0.338				0.316
Craft Supply USA	Americana Classic Twist BP	155-0405	1	11/32" or 'S'	0.338	2.17	0.413	0.413	0.316	x	x	x	x	x	x
PennState	Executive Twist BP & .7mm Pencil	PKEXECBU	1	3/8" or 'V'	0.368	2.88			0.342	x	x	x	x	x	x
Woodcraft	Retro Twist BP	148717	2	9mm	0.342	1.18	0.413	0.413	0.322	9mm	0.342	1.48	0.413	0.413	0.322
Craft Supply USA	Toolbox 5.6mm Pencil	050-4498	2	11mm	0.415	1.78	0.512	0.512	0.374	11mm	0.415	1.78	0.512	0.512	0.374
Craft Supply USA	Artist Sketch 5.6mm Pencil	050-5006	1	15/32"	0.450	3.46	0.580	0.557	0.429	x	x	x	x	x	x

# Pen Kit References for Bushings and Tubes

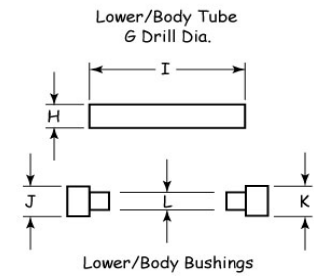
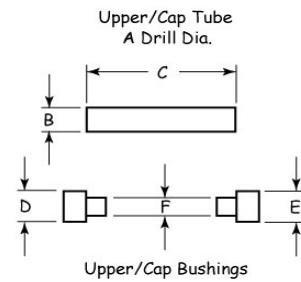
W Racinowski WRACINOWSKI at WI dot RR dot COM Revised 7-23-2010



Cells that are Yellow require dimensions.

Tolerances for:  
2 place Dims is +/- .01  
3 Place Dims is +/- .003

Typical Mandrel Sizes  
A - .247 Dia.  
B - .291 Dia.

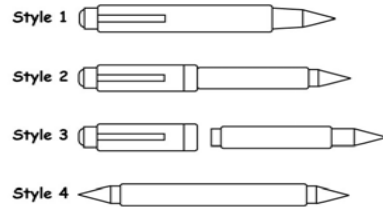


← Revisions or Additions

Pen Kit Supplier	Pen Kit Description Grouped by Styling	Suppliers Bushing Set	Pen Style	Upper / Cap Tube			Upper / Cap Bushings			Lower / Body Tube			Lower / Body Bushing		
				A Drill Dia.	B Dia.	C Length	D Dia.	E Dia.	F Dia.	G Drill Dia.	H Dia.	I Length	J Dia.	K Dia.	L Dia.
PennState	Deluxe Pen & Sketch 5.6mm Pencil	PKSPCL2BU	1	11mm	0.415	2.69	0.576	0.500	0.374	x	x	x	x	x	x
Penn State	Workshop Sketch 5.6mm Pencil	PKSPCLBU	2	11mm	0.415		0.512	0.512	0.374	11mm	0.415		0.512	0.512	0.374
Penn State	Mini Sketch 3mm Pencil	PKSPCL3BU	1	'O' or 8mm	0.311	3.50	0.435	0.435	0.286	x	x	x	x	x	x
> Rockler	Toolbox 5.6mm Pencil	26862	2	11mm	0.415	1.78	0.512	0.512	0.374	11mm	0.415	1.78	0.512	0.512	0.374
> William Wood-Write	Shop/Sketch Pencil	3311-82A	2	11mm	0.415				0.374	11mm	0.415				0.374
Woodcraft	Woodworker / Artist 5.6mm Pencil	146768	1	15/32"	0.450	3.47	0.578	0.554	0.429	x	x	x	x	x	x
> Penn State	Guardian Jr Click BP	PKGDJRBU	1	'O' or 8mm	0.311		0.555	0.555	0.286	x	x	x	x	x	x
> Penn State	Guardian Click BP	PKGDPENBU	1	'O' or 8mm	0.311	2.68	0.625	0.625	0.286	x	x	x	x	x	x
> Penn State	Guardian Snap Cap RB & FP	PKGDRBBU	2	9/16"			0.625	0.625		27/64"			0.530	0.530	
Craft Supply USA	Apprentice Teachers Twist BP	486-2007	4	7mm or 'J'	0.268	2.19	0.331	0.331	x	7mm or 'J'	0.268	(2) @ .81	0.331	0.331	x
Penn State	Teachers Twist BP	PKMBUSH3	4	7mm or 'J'	0.268	2.19	0.331	0.331	x	7mm or 'J'	0.268	(2) @ .81	0.331	0.331	x
> William Wood-Write	Teachers Twist BP	69-1A	4	7mm or 'J'	0.268	2.19	0.331	0.331	x	7mm or 'J'	0.268	(2) @ .81	0.331	0.331	x
Woodcraft	Teachers Twist BP	06R03	4	7mm or 'J'	0.268	2.19	0.331	0.331	x	7mm or 'J'	0.268	(2) @ .81	0.331	0.331	x
> Arizona Silhouette	Slimline & Series 2000 Twist BP	1A	2	7mm or 'J'	0.268	2.09	0.331	0.331	x	7mm or 'J'	0.268	2.09	0.331	0.331	x
> Arizona Silhouette	Slimline & Series 2000 Click Pencil	1A	2	7mm or 'J'	0.268	1.86	0.331	0.331	x	7mm or 'J'	0.268	1.86	0.331	0.331	x
> Arizona Silhouette	Slimline Deco/Greek Key Twist BP	1A	2	7mm or 'J'	0.268	2.09	0.331	0.331	x	7mm or 'J'	0.268	2.09	0.331	0.331	x
> Arizona Silhouette	Slimline Deco/Greek Key Click Pencil	1A	2	7mm or 'J'	0.268	1.86	0.331	0.331	x	7mm or 'J'	0.268	1.86	0.331	0.331	x
> Bear Tooth Woods	Slimline Twist BP	1A	2	7mm or 'J'	0.268	2.09	0.331	0.331	x	7mm or 'J'	0.268	2.09	0.331	0.331	x
> Bear Tooth Woods	Slimline Click Pencil	1A	2	7mm or 'J'	0.268	1.86	0.331	0.331	x	7mm or 'J'	0.268	1.86	0.331	0.331	x
> Bear Tooth Woods	Slimline Deco/Greek Key Twist BP	1A	2	7mm or 'J'	0.268	2.09	0.331	0.331	x	7mm or 'J'	0.268	2.09	0.331	0.331	x
> Bear Tooth Woods	Slimline Deco/Greek Key Click Pencil	1A	2	7mm or 'J'	0.268	1.86	0.331	0.331	x	7mm or 'J'	0.268	1.86	0.331	0.331	x
> Berea	Slimline Twist BP	1A	2	7mm or 'J'	0.268	2.09	0.331	0.331	x	7mm or 'J'	0.268	2.09	0.331	0.331	x
> Berea	Slimline Click Pencil	1A	2	7mm or 'J'	0.268	1.86	0.331	0.331	x	7mm or 'J'	0.268	1.86	0.331	0.331	x
> Berea	Slimline Deco/Greek Key Twist BP	1A	2	7mm or 'J'	0.268	2.09	0.331	0.331	x	7mm or 'J'	0.268	2.09	0.331	0.331	x
> Berea	Slimline Deco/Greek Key Click Pencil	1A	2	7mm or 'J'	0.268	1.86	0.331	0.331	x	7mm or 'J'	0.268	1.86	0.331	0.331	x
> Craft Supply USA	Slimline Twist or Beaded BP	950-3230	2	7mm or 'J'	0.268		0.335	0.335	x	7mm or 'J'	0.268		0.335	0.335	x
> Craft Supply USA	Father Sing BP	155-0040	2	7mm or 'J'	0.268		0.333	0.415	x	7mm or 'J'	0.268		0.415	0.333	x
> Lee Valley	Slimline Twist BP	88K78.70	2	7mm or 'J'	0.268	2.09	0.331	0.331	x	7mm or 'J'	0.268	2.09	0.331	0.331	x
> Lee Valley	Slimline Click Pencil	88K78.70	2	7mm or 'J'	0.268	1.86	0.331	0.331	x	7mm or 'J'	0.268	1.86	0.331	0.331	x
> Lee Valley	Slimline Deco/Greek Key Twist BP	88K78.70	2	7mm or 'J'	0.268	2.09	0.331	0.331	x	7mm or 'J'	0.268	2.09	0.331	0.331	x
> Lee Valley	Slimline Deco/Greek Key Click Pencil	88K78.70	2	7mm or 'J'	0.268	1.86	0.331	0.331	x	7mm or 'J'	0.268	1.86	0.331	0.331	x
> Penn State	Slimline Twist BP	PKMBUSH3	2	7mm or 'J'	0.268	2.03			x	7mm or 'J'	0.268	2.03			x
> Penn State	Slimline Click Pencil	PKMBUSH3	2	7mm or 'J'	0.268	2.03			x	7mm or 'J'	0.268	2.03			x
> Penn State	Funline Twist BP	PKMBUSH3	2	7mm or 'J'	0.268	2.03			x	7mm or 'J'	0.268	2.03			x
> Rockler	7mm Twist BP	37739	2	7mm or 'J'	0.268	2.09	0.334	0.334	x	7mm or 'J'	0.268	2.09	0.334	0.334	x
> Rockler	7mm Twist Pencil	37739	2	7mm or 'J'	0.268	1.85	0.334	0.334	x	7mm or 'J'	0.268	1.85	0.334	0.334	x
> Rockler	Slimline Twist BP	26200	2	7mm or 'J'	0.268				x	7mm or 'J'	0.268				x
> Rockler	Slimline Click Pencil	26200	2	7mm or 'J'	0.268				x	7mm or 'J'	0.268				x
> William Wood-Write	Slimline Twist BP	69-1A	2	7mm or 'J'	0.268	2.09	0.331	0.331	x	7mm or 'J'	0.268	2.09	0.331	0.331	x
> William Wood-Write	Slimline Click Pencil	69-1A	2	7mm or 'J'	0.268	1.86	0.331	0.331	x	7mm or 'J'	0.268	1.86	0.331	0.331	x

# Pen Kit References for Bushings and Tubes

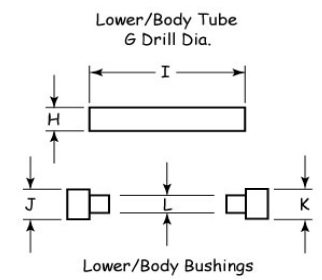
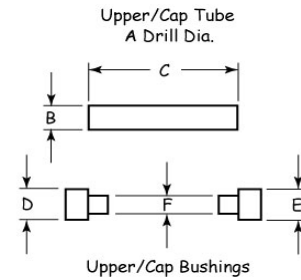
W Racinowski WRACINOWSKI at WI dot RR dot COM Revised 7-23-2010



Cells that are Yellow require dimensions.

Tolerances for:  
2 place Dims is +/- .01  
3 Place Dims is +/- .003

Typical Mandrel Sizes  
A - .247 Dia.  
B - .291 Dia.

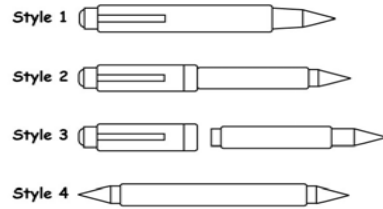


← Revisions or Additions

Pen Kit Supplier	Pen Kit Description Grouped by Styling	Suppliers Bushings Set	Pen Style	Upper / Cap Tube			Upper / Cap Bushings			Lower / Body Tube			Lower / Body Bushing		
				A Drill Dia.	B Dia.	C Length	D Dia.	E Dia.	F Dia.	G Drill Dia.	H Dia.	I Length	J Dia.	K Dia.	L Dia.
> William Wood-Write	Elegant Slimline & Deco Twist BP	69-1A	2	7mm or 'J'	0.268		0.331	0.331	x	7mm or 'J'	0.268		0.331	0.331	x
> Woodcraft	Slimline American Click BP	06R03	2	7mm or 'J'	0.268	2.09	0.331	0.331	x	7mm or 'J'	0.268	2.09	0.331	0.331	x
> Woodcraft	Slimline American Click Pencil	06R03	2	7mm or 'J'	0.268	1.85	0.331	0.331	x	7mm or 'J'	0.268	1.85	0.331	0.331	x
> Woodcraft	Slimline Click BP	06R03	2	7mm or 'J'	0.268	2.09	0.331	0.331	x	7mm or 'J'	0.268	2.09	0.331	0.331	x
> Woodcraft	Slimline Click Pencil	06R03	2	7mm or 'J'	0.268	1.85	0.331	0.331	x	7mm or 'J'	0.268	1.85	0.331	0.331	x
> Woodcraft	Slimline Deco (Spring Clip) Twist BP	06R03	2	7mm or 'J'	0.268	1.97	0.331	0.331	x	7mm or 'J'	0.268	2.36	0.331	0.331	x
> Woodcraft	Slimline Satin Twist BP	06R03	2	7mm or 'J'	0.268	2.03	0.331	0.331	x	7mm or 'J'	0.268	2.03	0.331	0.331	x
> Woodcraft	Slimline Satin Twist Pencil	06R03	2	7mm or 'J'	0.268	2.03	0.331	0.331	x	7mm or 'J'	0.268	2.03	0.331	0.331	x
> Woodcraft	Slimline Solid Clip Twist BP	06R03	2	7mm or 'J'	0.268	2.09	0.331	0.331	x	7mm or 'J'	0.268	2.09	0.331	0.331	x
> Woodcraft	Slimline Solid Clip Twist Pencil	06R03	2	7mm or 'J'	0.268	1.85	0.331	0.331	x	7mm or 'J'	0.268	1.85	0.331	0.331	x
Arizona Silhouette	Biscayne Flat Top Twist BP	AZSB-14A	2	7mm or 'J'	0.268	2.09	0.347	0.434	x	7mm or 'J'	0.268	2.09	0.434	0.331	x
> Arizona Silhouette	Streamline 7mm Flat Top Twist BP	14A	2	7mm or 'J'	0.268	2.09	0.344	0.416	x	7mm or 'J'	0.268	2.09	0.416	0.334	x
> Bear Tooth Woods	Streamline Slim or Rubber Grip Twist BP	14A	2	7mm or 'J'	0.268	2.09	0.344	0.416	x	7mm or 'J'	0.268	2.09	0.416	0.334	x
> Berea	Streamline Twist BP	14A	2	7mm or 'J'	0.268	2.09	0.344	0.416	x	7mm or 'J'	0.268	2.09	0.416	0.334	x
Craft Supply USA	Apprentice Roadster Twist BP	486-2015	2	7mm or 'J'	0.268	2.09	0.348	0.425	x	7mm or 'J'	0.268	2.09	0.425	0.332	x
> Lee Valley	Streamline 7mm Flat Top Twist BP	88K78.76	2	7mm or 'J'	0.268	2.09	0.344	0.416	x	7mm or 'J'	0.268	2.09	0.416	0.334	x
Penn State	Trimline Twist BP	PKXMBU	2	7mm or 'J'	0.268	2.09	0.347	0.440	x	7mm or 'J'	0.268	2.09	0.440	0.330	x
> Rockler	Streamline Slim or Soft Grip Twist BP	25712	2	7mm or 'J'	0.268	2.09	0.413	0.432	x	7mm or 'J'	0.268	2.09	0.432	0.335	x
> Rockler	Soft Grip Click Pencil	25712	2	7mm or 'J'	0.268	2.09	0.413	0.432	x	7mm or 'J'	0.268	2.09	0.432	0.335	x
> William Wood-Write	Streamline or Rubber Easy Grip Twist BP	1226-14A	2	7mm or 'J'	0.268	2.09	0.344	0.416	x	7mm or 'J'	0.268	2.09	0.416	0.334	x
Woodcraft	Toni Twist BP	145228	2	7mm or 'J'	0.268	2.09	0.330	0.415	x	7mm or 'J'	0.268	2.09	0.415	0.330	x
> Arizona Silhouette	Round Top 8mm European Twist BP	3B	2	'O' or 8mm	0.311	2.01	0.410	.550 / .471	0.286	'O' or 8mm	0.311	2.37	0.471	0.366	0.286
> Arizona Silhouette	Round Top 7mm European Twist BP	10A	2	7mm or 'J'	0.268	2.09	0.406	0.406	x	7mm or 'J'	0.268	2.37	0.406	0.358	x
> Arizona Silhouette	Streamline 7mm Round Top Twist BP	18A	2	7mm or 'J'	0.268	2.09	0.411	0.415	x	7mm or 'J'	0.268	2.21	0.418	0.332	x
> Bear Tooth Woods	Streamline 7mm Round Top Twist BP	18A	2	7mm or 'J'	0.268	2.09	0.411	0.415	x	7mm or 'J'	0.268	2.21	0.418	0.332	x
> Bear Tooth Woods	Round Top 7mm Euro Twist BP	10A	2	7mm or 'J'	0.268	2.09	0.406	0.406	x	7mm or 'J'	0.268	2.37	0.406	0.358	x
> Bear Tooth Woods	Round Top 8mm Euro Twist BP	3B	2	'O' or 8mm	0.311	2.01	0.410	.550 / .471	0.286	'O' or 8mm	0.311	2.37	0.471	0.366	0.286
> Berea	Round Top 8mm European Twist BP	3B	2	'O' or 8mm	0.311	2.01	0.410	.550 / .471	0.286	'O' or 8mm	0.311	2.37	0.471	0.366	0.286
Craft Supply USA	Apprentice 7mm European Twist BP	486-2006	2	7mm or 'J'	0.268	2.09	0.406	.512 / .406	x	7mm or 'J'	0.268	2.36	0.406	0.360	x
Craft Supply USA	European / Deco 8mm European Twist BP	155-1100	2	7mm or 'J'	0.268	2.09	0.406	.529 / .425	x	7mm or 'J'	0.268	2.36	0.425	0.360	x
> Lee Valley	Round Top European 7mm Twist BP	88K78.71	2	7mm or 'J'	0.268	2.09	0.406	0.406	x	7mm or 'J'	0.268	2.37	0.406	0.358	x
> Lee Valley	Streamline 7mm Round Top Twist BP	88K78.77	2	7mm or 'J'	0.268	2.09	0.411	0.415	x	7mm or 'J'	0.268	2.21	0.418	0.332	x
> Penn State	Designer 7mm Twist BP	PKMONTBU	2	7mm or 'J'	0.268	2.13	0.406	0.406	x	7mm or 'J'	0.268	2.38	0.406	0.300	x
> Rockler	Round Top European 7mm Twist BP	29973	2	7mm or 'J'	0.268	2.09			x	7mm or 'J'	0.268	2.36			x
> Rockler	Round Top 8mm Twist BP	21676	2	'O' or 8mm	0.311	2.01	0.415	.554 / .473	0.286	'O' or 8mm	0.311	2.36	0.473	0.371	0.286
> William Wood-Write	Round Top European 7mm Twist BP	1352-10A	2	7mm or 'J'	0.268			.515 / .412	x	7mm or 'J'	0.268				x
> William Wood-Write	Round Top European 8mm Twist BP	794-3B	2	'O' or 8mm	0.311	2.09	0.410	.550 / .471	0.286	'O' or 8mm	0.311	2.37	0.471	0.351	0.286
Woodcraft	European 7mm Twist BP	06S62	2	7mm or 'J'	0.268	2.09	0.406	.512 / .400	x	7mm or 'J'	0.268	2.36	0.425	0.360	x
Woodcraft	European 7mm Deco Twist BP	06S62	2	7mm or 'J'	0.268	2.09	0.406	.512 / .400	x	7mm or 'J'	0.268	2.36	0.425	0.360	x
Arizona Silhouette	Round Top European Twist .7mm Pencil	3B	2	'O' or 8mm	0.311				0.286	'O' or 8mm	0.311				0.286

# Pen Kit References for Bushings and Tubes

W Racinowski WRACINOWSKI at WI dot RR dot COM Revised 7-23-2010

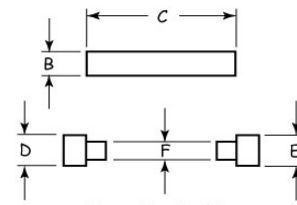


Cells that are Yellow require dimensions.

Tolerances for:  
2 place Dims is +/- .01  
3 Place Dims is +/- .003

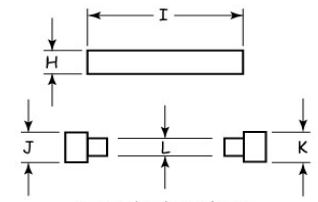
Typical Mandrel Sizes  
A - .247 Dia.  
B - .291 Dia.

Upper/Cap Tube  
A Drill Dia.



Upper/Cap Bushings

Lower/Body Tube  
G Drill Dia.



Lower/Body Bushings

← Revisions or Additions

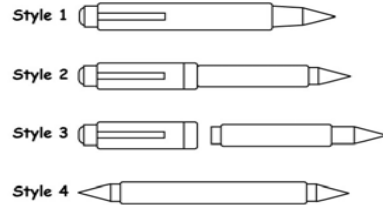
Pen Kit Supplier	Pen Kit Description Grouped by Styling	Suppliers Bushing Set	Pen Style	Upper / Cap Tube			Upper / Cap Bushings			Lower / Body Tube			Lower / Body Bushing		
				A Drill Dia.	B Dia.	C Length	D Dia.	E Dia.	F Dia.	G Drill Dia.	H Dia.	I Length	J Dia.	K Dia.	L Dia.
> Bear Tooth Woods	Round Top 8mm Euro Twist .7mm Pencil	3B	2	'O' or 8mm	0.311	2.01	0.410	.550 / .471	0.286	'O' or 8mm	0.311	2.37	0.471	0.366	0.286
Berea	Round Top European Twist .7mm Pencil	3B	2	'O' or 8mm	0.311				0.286	'O' or 8mm	0.311				0.286
Craft Supply USA	European .7mm Pencil	155-0045	2	11/32" or 'S'	0.338	2.17	0.410	.529 / .397	0.316	11/32" or 'S'	0.338	2.32	0.397	0.397	0.316
> Rockler	Round Top European Twist .7mm Pencil	21676	2	'O' or 8mm	0.311	2.00	0.415	.554 / .473	0.286	'O' or 8mm	0.311	2.36	0.473	0.371	0.286
Woodcraft	European Twist .5mm Pencil	123485	2	11/32" or 'S'	0.338	2.17	0.406	.512 / .400	0.316	11/32" or 'S'	0.338	2.33	0.400	0.400	0.316
> Arizona Silhouette	Olympia Twist BP	17A	2	'O' or 8mm	0.311				0.286	7mm or 'J'	0.268				x
> William Wood-Write	Olympia Twist BP	1851-17A	2	'O' or 8mm	0.311				0.286	7mm or 'J'	0.268				x
Arizona Silhouette	Flat Top Click Push Cap BP	4B	2	11mm	0.415				0.374	'O' or 8mm	0.311				0.286
> Arizona Silhouette	Flat Top American Twist BP	1B	2	'O' or 8mm	0.311	2.01	0.485	0.485	0.286	'O' or 8mm	0.311	2.01	0.485	0.388	0.286
> Arizona Silhouette	Flat Top American Elite Twist BP	1B	2	'O' or 8mm	0.311	2.01	0.485	0.485	0.286	'O' or 8mm	0.311	2.01	0.485	0.388	0.286
Arizona Silhouette	Elegant American Twist BP	15A or 17B	2	'O' or 8mm	0.311				0.286	'O' or 8mm	0.311				0.286
> Bear Tooth Woods	Flat Top American Twist BP	1B	2	'O' or 8mm	0.311	2.01	0.485	0.485	0.286	'O' or 8mm	0.311	2.01	0.485	0.388	0.286
> Bear Tooth Woods	Flat Top American Twist Hybrid BP	1B	2	'O' or 8mm	0.311	2.01	0.485	0.485	0.286	'O' or 8mm	0.311	2.01	0.485	0.388	0.286
Berea	Elegant American Twist BP	15A or 17B	2	'O' or 8mm	0.311				0.286	'O' or 8mm	0.311				0.286
> Berea	Flat Top American Double Twist Hybrid BP	1B	2	'O' or 8mm	0.311		0.485	0.485	0.286	'O' or 8mm	0.311		0.485	0.388	0.286
Berea	Flat Top Click Push Cap BP	4B	2	11mm	0.415				0.374	'O' or 8mm	0.311				0.286
> Berea	Flat Top Twist BP	1B	2	'O' or 8mm	0.311		0.485	0.485	0.286	'O' or 8mm	0.311		0.485	0.388	0.286
Craft Supply USA	Americana Twist BP	955-0104	2	'O' or 8mm	0.311	2.05	0.487	.529 / .397	0.286	'O' or 8mm	0.311	2.05	0.397	0.397	0.286
Craft Supply USA	Silver Bullet	955-0104	2	'O' or 8mm	0.311	2.05	0.487	.529 / .397	0.286	'O' or 8mm	0.311	2.05	0.397	0.397	0.286
Craft Supply USA	Apprentice Americana Twist BP	486-2005	2	'O' or 8mm	0.311	2.05	0.492	.492 / .401	0.286	'O' or 8mm	0.311	2.05	0.401	0.401	0.286
> Lee Valley	Flat Top Twist BP	88K78.78	2	'O' or 8mm	0.311		0.485	0.485	0.286	'O' or 8mm	0.311		0.485	0.388	0.286
Penn State	Classic Twist BP	PKPARKBU	2	'O' or 8mm	0.311	2.06	0.492	0.492	0.286	'O' or 8mm	0.311	2.06	0.401	0.401	0.286
Penn State	Classic Click BP	PKPARKBU2	2	11mm	0.415	2.11			0.374	'O' or 8mm	0.311	1.78			0.286
> Rockler	Flat Top American Twist BP	21668	2	'O' or 8mm	0.311	2.01	0.492	0.492	0.286	'O' or 8mm	0.311	2.01	0.394	0.394	0.286
> Rockler	Flat Top American Click Push Cap BP	30746	2	11mm	0.415	2.17	0.492	0.492	0.374	'O' or 8mm	0.311	1.69	0.387	0.387	0.286
> William Wood-Write	Flat Top American Twist BP	86-1B	2	'O' or 8mm	0.311		0.485	0.485	0.286	'O' or 8mm	0.311		0.485	0.388	0.286
Woodcraft	Classic American Click Push Cap BP	146600	2	11mm	0.415	2.17	0.492	0.492	0.374	'O' or 8mm	0.311	1.69	0.387	0.387	0.286
Woodcraft	Classic American Twist BP	06R07	2	'O' or 8mm	0.311	2.01	0.495	0.495	0.286	'O' or 8mm	0.311	2.01	0.397	0.397	0.286
> Arizona Silhouette	Flat Top American Twist .7mm Pencil	1B	2	'O' or 8mm	0.311		0.485	0.485	0.286	'O' or 8mm	0.311		0.485	0.388	0.286
> Berea	Flat Top Twist .7mm Pencil	1B	2	'O' or 8mm	0.311		0.485	0.485	0.286	'O' or 8mm	0.311		0.485	0.388	0.286
Craft Supply USA	Americana Twist .7mm Pencil	155-5502	2	11/32" or 'S'	0.338	1.91	0.488	0.488	0.316	11/32" or 'S'	0.338	2.16	0.488	0.488	0.316
> Lee Valley	Flat Top Twist .7mm Pencil	88K78.78	2	'O' or 8mm	0.311		0.485	0.485	0.286	'O' or 8mm	0.311		0.485	0.388	0.286
Penn State	Classic Twist .7mm Pencil	PKPARKBU3	2	'O' or 8mm	0.311	2.00	0.490	0.490	0.286	'O' or 8mm	0.311	2.00	0.390	0.390	0.286
Woodcraft	Classic American Twist .7mm Pencil	06R07	2	'O' or 8mm	0.311	2.01	0.495	0.495	0.286	'O' or 8mm	0.311	2.01	0.397	0.397	0.286
> Arizona Silhouette	Elegant American Twist BP	15A or 17B	2	'O' or 8mm	0.311	2.00	0.400	0.470	0.286	'O' or 8mm	0.311	2.15	0.470	0.360	0.286
> Berea	Elegant American Twist BP	15A or 17B	2	'O' or 8mm	0.311	2.00	0.400	0.470	0.286	'O' or 8mm	0.311	2.15	0.470	0.360	0.286
> Rockler	Elegant American Twist BP	24324	2	'O' or 8mm	0.311	2.00	0.400	0.470	0.286	'O' or 8mm	0.311	2.15	0.470	0.360	0.286
Woodcraft	Hart Double Twist BP	145233	2	'O' or 8mm	0.311	2.00	0.400	0.470	0.286	'O' or 8mm	0.311	2.15	0.470	0.360	0.286



# Pen Kit References for Bushings and Tubes

W Racinowski WRACINOWSKI at WI dot RR dot COM Revised 7-23-2010

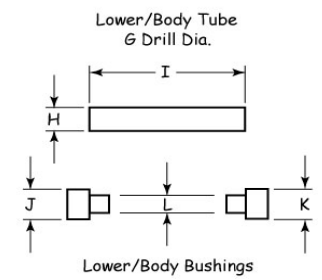
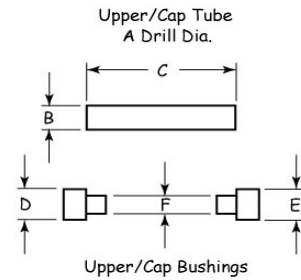
← Revisions or Additions



Cells that are Yellow require dimensions.

Tolerances for:  
2 place Dims is +/- .01  
3 Place Dims is +/- .003

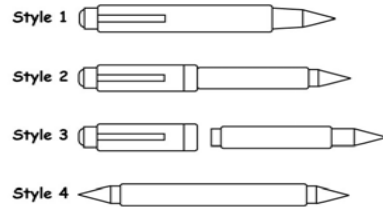
Typical Mandrel Sizes  
A - .247 Dia.  
B - .291 Dia.



Pen Kit Supplier	Pen Kit Description Grouped by Styling	Suppliers Bushing Set	Pen Style	Upper / Cap Tube			Upper / Cap Bushings			Lower / Body Tube			Lower / Body Bushing		
				A Drill Dia.	B Dia.	C Length	D Dia.	E Dia.	F Dia.	G Drill Dia.	H Dia.	I Length	J Dia.	K Dia.	L Dia.
> Arizona Silhouette	Cushion Grip Click BP	15B	2	'O' or 8mm	0.311	2.09	0.373	0.373	0.286	'O' or 8mm	0.311	1.98	x	x	0.286
> Berea	Cushion Grip Click BP	15B	2	'O' or 8mm	0.311	2.09	0.373	0.373	0.286	'O' or 8mm	0.311	1.98	x	x	0.286
> Lee Valley	Cushion Grip Click BP	88K78.74	2	'O' or 8mm	0.311	2.09	0.373	0.373	0.286	'O' or 8mm	0.311	1.98	x	x	0.286
> Rockler	Cushion Grip Click BP	61439	2	'O' or 8mm	0.311	2.09	0.373	0.373	0.286	'O' or 8mm	0.311	1.98	x	x	0.286
> Woodcraft	Cushion Grip Click BP	144638	2	'O' or 8mm	0.311	2.09	0.373	0.373	0.286	'O' or 8mm	0.311	1.98	x	x	0.286
> Arizona Silhouette	Button Click BP	5A	2	11/32" or 'S'	0.338	1.98	0.388	0.388	0.316	11/32" or 'S'	0.338	1.98	0.388	0.388	0.316
> Berea	Click BP	5A	2	11/32" or 'S'	0.338	1.98	0.388	0.388	0.316	11/32" or 'S'	0.338	1.98	0.388	0.388	0.316
> Craft Supply USA	Click BP	155-4503	2	'O' or 8mm	0.311	1.96	0.373	0.373	0.286	'O' or 8mm	0.311	1.96	0.373	0.373	0.286
> Craft Supply USA	Click .5mm Pencil	155-4503	2	'O' or 8mm	0.311	1.96	0.373	0.373	0.286	'O' or 8mm	0.311	1.96	0.373	0.373	0.286
> Penn State	Power Click BP & Pencil	PKBOWBU	2	'O' or 8mm	0.311	1.88			0.286	'O' or 8mm	0.311	1.88			0.286
> Penn State	Slimline Pro Click BP & .7mm Pencil	PKPENXXBU	2	'O' or 8mm	0.311	2.03	0.426	0.426	0.286	'O' or 8mm	0.311	2.03	0.426	0.426	0.286
> Rockler	Button Click BP	30631 or 5A	2	11/32" or 'S'	0.338	1.98	0.388	0.388	0.316	11/32" or 'S'	0.338	1.98	0.388	0.388	0.316
> Woodcraft	Click BP	127767	2	'O' or 8mm	0.311	1.98	0.373	0.373	0.286	'O' or 8mm	0.311	1.98	0.373	0.373	0.286
> Arizona Silhouette	Perfect Fit Convertable BP	14B	2	11/32" or 'S'	0.338	2.13	0.462	0.542	0.316	'O' or 8mm	0.311	2.36	0.467	0.367	0.286
> Bear Tooth Wood	Perfect Fit Convertable BP	14B	2	11/32" or 'S'	0.338	2.13	0.462	0.542	0.316	'O' or 8mm	0.311	2.36	0.467	0.367	0.286
> Berea	Perfect Fit Convertable BP	14B	2	11/32" or 'S'	0.338	2.13	0.462	0.542	0.316	'O' or 8mm	0.311	2.36	0.467	0.367	0.286
> Lee Valley	Half Twist Floral & Triangle BP	88K78.79	2	11/32" or 'S'	0.338	2.13	0.462	0.542	0.316	'O' or 8mm	0.311	2.36	0.467	0.367	0.286
> Rockler	Perfect Fit Convertable BP	61403	2	11/32" or 'S'	0.338	2.13	0.462	0.542	0.316	'O' or 8mm	0.311	2.36	0.467	0.367	0.286
> William Wood-Write	Perfect Fit Convertible BP	14B	2	11/32" or 'S'	0.338	2.13	0.462	0.542	0.316	'O' or 8mm	0.311	2.36	0.467	0.367	0.286
> Arizona Silhouette	Perfect Fit Convertible .7mm Pencil	14B	2	11/32" or 'S'	0.338	2.13	0.462	0.542	0.316	'O' or 8mm	0.311	2.36	0.467	0.367	0.286
> Bear Tooth Wood	Perfect Fit Convertible .7mm Pencil	14B	2	11/32" or 'S'	0.338	2.13	0.462	0.542	0.316	'O' or 8mm	0.311	2.36	0.467	0.367	0.286
> Berea	Perfect Fit Convertible .7mm Pencil	14B	2	11/32" or 'S'	0.338	2.13	0.462	0.542	0.316	'O' or 8mm	0.311	2.36	0.467	0.367	0.286
> Lee Valley	Half Twist Floral & Triangle .7mm Pencil	88K78.79	2	11/32" or 'S'	0.338	2.13	0.462	0.542	0.316	'O' or 8mm	0.311	2.36	0.467	0.367	0.286
> Rockler	Perfect Fit Convertible .7mm Pencil	61403	2	11/32" or 'S'	0.338	2.13	0.462	0.542	0.316	'O' or 8mm	0.311	2.36	0.467	0.367	0.286
> William Wood-Write	Perfect Fit Convertible .7mm Pencil	14B	2	11/32" or 'S'	0.338	2.13	0.462	0.542	0.316	'O' or 8mm	0.311	2.36	0.467	0.367	0.286
> Arizona Silhouette	Bullet Cartridge Twist Pen	26A	2	10 mm or 25/64"	0.385	2.09	0.466	0.466	0.357	x	x	x	x	x	x
> Bear Tooth Wood	Bullet Cartridge Twist Pen	26A	2	10 mm or 25/64"	0.385	2.09	0.466	0.466	0.357	x	x	x	x	x	x
> Berea	Bullet Cartridge Twist Pen	26A	2	10 mm or 25/64"	0.385	2.09	0.466	0.466	0.357	x	x	x	x	x	x
> Penn State	Bullet Cartridge Click Pen	PKCP2400BU	2	'O' or 8mm	0.311	2.03	0.466	0.466	0.286	x	x	x	x	x	x
> Rockler	Rifle Bullet Cartridge Click Pen	29501 or 26A	2	10 mm or 25/64"	0.385	2.09	0.466	0.466	0.286	x	x	x	x	x	x
> William Wood-Write	Bullet Cartridge Twist Pen	5887-26A	2	10 mm or 25/64"	0.385	2.09	0.466	0.466	0.357	x	x	x	x	x	x
> Woodcraft	Bullet Cartridge Twist Pen	150488	2	10 mm or 25/64"	0.385	2.09	0.466	0.466	0.357	x	x	x	x	x	x
> Arizona Silhouette	Cigar Twist BP	11A or 11B	2	10 mm or 25/64"	0.385	1.91	0.475	0.575	0.357	10 mm or 25/64"	0.385	2.09	0.530	0.459	0.357
> Bear Tooth Wood	Cigar Twist BP	11A or 19B	2	10 mm or 25/64"	0.385	1.91	0.475	0.575	0.357	10 mm or 25/64"	0.385	2.09	0.530	0.459	0.357
> Berea	Fat Cigar Twist BP	11A or 19B	2	10 mm or 25/64"	0.385	1.91	0.475	0.575	0.357	10 mm or 25/64"	0.385	2.09	0.530	0.459	0.357
> Craft Supply USA	Apprentice Cigar Twist BP	486-2003	2	10 mm or 25/64"	0.385	1.91	0.475	0.575	0.357	10 mm or 25/64"	0.385	2.09	0.530	0.459	0.357
> Craft Supply USA	Cigar Twist BP	155-4101	2	10 mm or 25/64"	0.385	1.91	0.475	0.575	0.357	10 mm or 25/64"	0.385	2.09	0.530	0.459	0.357
> Lee Valley	Extra Large Twist (Cigar) BP	88K78.72	2	10 mm or 25/64"	0.385	1.91	0.475	0.575	0.357	10 mm or 25/64"	0.385	2.09	0.530	0.459	0.357

# Pen Kit References for Bushings and Tubes

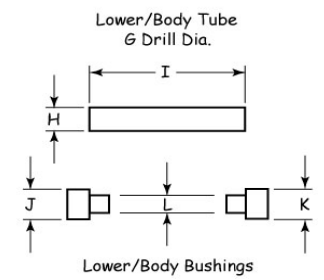
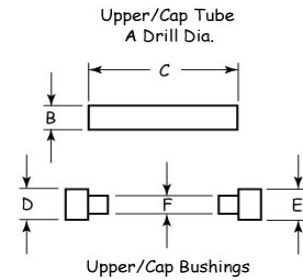
W Racinowski WRACINOWSKI at WI dot RR dot COM Revised 7-23-2010



Cells that are Yellow require dimensions.

Tolerances for:  
2 place Dims is +/- .01  
3 Place Dims is +/- .003

Typical Mandrel Sizes  
A - .247 Dia.  
B - .291 Dia.



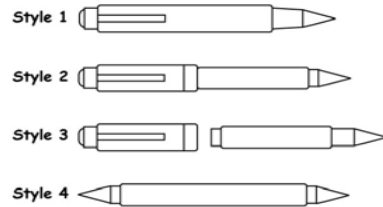
← Revisions or Additions

Pen Kit Supplier	Pen Kit Description Grouped by Styling	Suppliers Bushing Set	Pen Style	Upper / Cap Tube			Upper / Cap Bushings			Lower / Body Tube			Lower / Body Bushing		
				A Drill Dia.	B Dia.	C Length	D Dia.	E Dia.	F Dia.	G Drill Dia.	H Dia.	I Length	J Dia.	K Dia.	L Dia.
Penn State	Big Ben Cigar Twist BP	PKBIGBU	2	10 mm or 25/64"	0.385	1.94	0.475	0.575	0.357	10 mm or 25/64"	0.385	2.06	0.530	0.459	0.357
Penn State	Big Ben Cigar Screw Cap FP & RB	PKBIGBU	3	10 mm or 25/64"	0.385	2.00	0.475	0.575	0.357	10 mm or 25/64"	0.385	2.38	0.530	0.459	0.357
Rockler	Cigar Twist BP	24204	2	10 mm or 25/64"	0.385	1.91	0.475	0.575	0.357	10 mm or 25/64"	0.385	2.09	0.530	0.459	0.357
William Wood-Write	Cigar Twist BP	54-11A	2	10 mm or 25/64"	0.385	1.91	0.475	0.575	0.357	10 mm or 25/64"	0.385	2.09	0.530	0.459	0.357
Woodcraft	Premier Cigar Twist BP	147161	2	10 mm or 25/64"	0.385	1.91	0.475	0.575	0.357	10 mm or 25/64"	0.385	2.09	0.530	0.459	0.357
Arizona Silhouette	Cigar .5mm Pencil	11A or 11B	2	10 mm or 25/64"	0.385	1.91	0.475	0.575	0.357	10 mm or 25/64"	0.385	2.06	0.530	0.459	0.357
Bear Tooth Wood	Cigar .5mm Pencil	11A or 19B	2	10 mm or 25/64"	0.385	1.91	0.475	0.575	0.357	10 mm or 25/64"	0.385	2.06	0.530	0.459	0.357
Berea	Fat Cigar .5mm Pencil	11A or 19B	2	10 mm or 25/64"	0.385	1.91	0.475	0.575	0.357	10 mm or 25/64"	0.385	2.06	0.530	0.459	0.357
Penn State	Big Ben Cigar .5mm Pencil	PKBIGBU	2	10 mm or 25/64"	0.385	1.94	0.475	0.575	0.357	10 mm or 25/64"	0.385	2.06	0.530	0.459	0.357
Rockler	Cigar .5mm Pencil	24204	2	10 mm or 25/64"	0.385	1.91	0.475	0.575	0.357	10 mm or 25/64"	0.385	2.06	0.530	0.459	0.357
William Wood-Write	Cigar .5mm Pencil	54-11A	2	10 mm or 25/64"	0.385	1.91	0.475	0.575	0.357	10 mm or 25/64"	0.385	2.06	0.530	0.459	0.357
Woodcraft	Premier Cigar .5mm Pencil	147161	2	10 mm or 25/64"	0.385	1.91	0.475	0.575	0.357	10 mm or 25/64"	0.385	2.06	0.530	0.459	0.357
Arizona Silhouette	Bowtie Cigar Twist BP	22A	2	10 mm or 25/64"	0.385	1.91	0.475	0.554	0.357	10 mm or 25/64"	0.385	2.20	0.456	0.456	0.357
Bear Tooth Woods	Bowtie Cigar Twist BP	22A	2	10 mm or 25/64"	0.385	1.91	0.475	0.554	0.357	10 mm or 25/64"	0.385	2.20	0.456	0.456	0.357
Berea	Bowtie Cigar Twist BP	22A	2	10 mm or 25/64"	0.385	1.91	0.475	0.554	0.357	10 mm or 25/64"	0.385	2.20	0.456	0.456	0.357
William Wood-Write	Bowtie Cigar Twist BP	5260-22A	2	10 mm or 25/64"	0.385	1.91	0.475	0.554	0.357	10 mm or 25/64"	0.385	2.20	0.456	0.456	0.357
Woodcraft	Bowtie Cigar Twist BP	149798	2	10 mm or 25/64"	0.385	1.91	0.475	0.554	0.357	10 mm or 25/64"	0.385	2.20	0.456	0.456	0.357
Arizona Silhouette	Cubana Cigar Twist BP	11A or 11B	2	10 mm or 25/64"	0.385	1.91	0.475	0.575	0.357	10 mm or 25/64"	0.385	2.09	0.530	0.459	0.357
Bear Tooth Wood	Hybrid Cigar Twist BP	11A or 19B	2	10 mm or 25/64"	0.385	1.91	0.475	0.575	0.357	10 mm or 25/64"	0.385	2.09	0.530	0.459	0.357
Berea	Hybrid Cigar Twist BP	11A or 19B	2	10 mm or 25/64"	0.385	1.91	0.475	0.575	0.357	10 mm or 25/64"	0.385	2.09	0.530	0.459	0.357
Rockler	Hybrid Cigar Twist BP	11A or 19B	2	10 mm or 25/64"	0.385	1.91	0.475	0.575	0.357	10 mm or 25/64"	0.385	2.09	0.530	0.459	0.357
William Wood-Write	Hybrid Cigar Twist BP	54-11A	2	10 mm or 25/64"	0.385	1.91	0.475	0.575	0.357	10 mm or 25/64"	0.385	2.09	0.530	0.459	0.357
Woodcraft	Hybrid Cigar Twist BP	147161	2	10 mm or 25/64"	0.385	1.91	0.475	0.575	0.357	10 mm or 25/64"	0.385	2.09	0.530	0.459	0.357
Arizona Silhouette	Ultra Cigar Twist BP	11A or 11B	2	10 mm or 25/64"	0.385	1.91	0.475	0.575	0.357	10 mm or 25/64"	0.385	2.09	0.530	0.459	0.357
Bear Tooth Wood	Ultra Cigar Twist BP	11A or 19B	2	10 mm or 25/64"	0.385	1.91	0.475	0.575	0.357	10 mm or 25/64"	0.385	2.09	0.530	0.459	0.357
Berea	Ultra Cigar Twist BP	11A or 19B	2	10 mm or 25/64"	0.385	1.91	0.475	0.575	0.357	10 mm or 25/64"	0.385	2.09	0.530	0.459	0.357
Lee Valley	Ornate XL Twist (Cigar) BP	88K78.72	2	10 mm or 25/64"	0.385	1.91	0.475	0.575	0.357	10 mm or 25/64"	0.385	2.09	0.530	0.459	0.357
William Wood-Write	Ultra Cigar Twist BP	54-11A	2	10 mm or 25/64"	0.385	1.91	0.475	0.575	0.357	10 mm or 25/64"	0.385	2.09	0.530	0.459	0.357
Woodcraft	Ultra Cigar Twist BP	147161	2	10 mm or 25/64"	0.385	1.91	0.475	0.575	0.357	10 mm or 25/64"	0.385	2.09	0.530	0.459	0.357
Craft Supply USA	Jr Gentleman Twist Cap BP & .7mm Pencil	050-4041	2	15/32"	0.450	1.93	0.535	0.535	0.428	10mm or 25/64"	0.385	2.09	0.480	0.460	0.357
Arizona Silhouette	Streamline European Screw Cap RB & FP	8B	3	3/8" or 'V'	0.368	1.98	0.440	0.525	0.342	3/8" or 'V'	0.368	1.98	0.449	0.449	0.342
Arizona Silhouette	Streamline Round Top Screw Cap RB & FP	8B	3	3/8" or 'V'	0.368	1.98	0.440	0.525	0.342	3/8" or 'V'	0.368	1.98	0.449	0.449	0.342
Bear Tooth Wood	Round Top 8mm Euro Screw Cap RB & FP	8B	3	3/8" or 'V'	0.368	1.98	0.440	0.525	0.342	3/8" or 'V'	0.368	1.98	0.449	0.449	0.342
Bear Tooth Wood	Streamline Round Top Screw Cap RB & FP	8B	3	3/8" or 'V'	0.368	1.98	0.440	0.525	0.342	3/8" or 'V'	0.368	1.98	0.449	0.449	0.342
Berea	Round Top European Screw Cap RB & FP	8B	3	3/8" or 'V'	0.368	1.98	0.440	0.525	0.342	3/8" or 'V'	0.368	1.98	0.449	0.449	0.342
Berea	Streamline Round Top Screw Cap RB & FP	8B	3	3/8" or 'V'	0.368	1.98	0.440	0.525	0.342	3/8" or 'V'	0.368	1.98	0.449	0.449	0.342
Woodcraft	European Screw Cap RB & FP	128452	3	3/8" or 'V'	0.368	1.98	0.449	0.524	0.342	3/8" or 'V'	0.368	1.98	0.447	0.444	0.342



# Pen Kit References for Bushings and Tubes

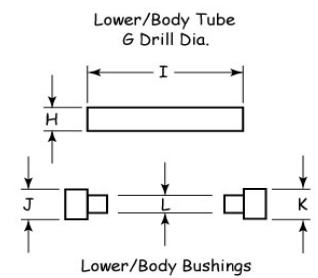
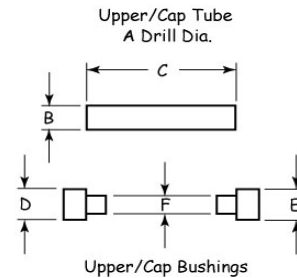
W Racinowski WRACINOWSKI at WI dot RR dot COM Revised 7-23-2010



Cells that are Yellow require dimensions.

Tolerances for:  
2 place Dims is +/- .01  
3 Place Dims is +/- .003

Typical Mandrel Sizes  
A - .247 Dia.  
B - .291 Dia.

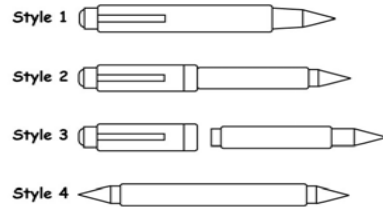


← Revisions or Additions

Pen Kit Supplier	Pen Kit Description Grouped by Styling	Suppliers Bushing Set	Pen Style	Upper / Cap Tube			Upper / Cap Bushings			Lower / Body Tube			Lower / Body Bushing		
				A Drill Dia.	B Dia.	C Length	D Dia.	E Dia.	F Dia.	G Drill Dia.	H Dia.	I Length	J Dia.	K Dia.	L Dia.
Woodcraft	European Streamline Screw Cap RB & FP	06S89	3	3/8" or 'V'	0.368	1.98	0.492	0.492	0.342	3/8" or 'V'	0.368	2.42	0.450	0.450	0.342
Arizona Silhouette	Streamline American Flat Top Screw Cap RB & FP	2B	3	3/8" or 'V'	0.368				0.342	3/8" or 'V'	0.368				0.342
Arizona Silhouette	Flat Top Screw Cap RB & FP	2B	3	3/8" or 'V'	0.368				0.342	3/8" or 'V'	0.368				0.342
> Berea	Streamline American Flat Top Screw Cap RB & FP	2B	3	3/8" or 'V'	0.368				0.342	3/8" or 'V'	0.368				0.342
Berea	Flat Top Snap Cap RB & FP	2B	3	3/8" or 'V'	0.368				0.342	3/8" or 'V'	0.368				0.342
Berea	Flat Top American Screw Cap RB & FP	2B	3	3/8" or 'V'	0.368				0.342	3/8" or 'V'	0.368				0.342
Berea	Flat Top Series 2000 Screw Cap RB & FP	2B	3	3/8" or 'V'	0.368				0.342	3/8" or 'V'	0.368				0.342
Craft Supply USA	Americana Screw Cap RB & FP	955-0502	3	10 mm or 25/64"	0.385	1.97	0.490	0.490	0.357	10 mm or 25/64"	0.385	2.16	0.456	0.456	0.357
Craft Supply USA	Artisan Screw Cap RB & FP	155-5111	3	10 mm or 25/64"	0.385	2.17	0.450	0.450	0.357	10 mm or 25/64"	0.385	2.17	0.450	0.450	0.357
> Lee Valley	Flat Top Screw Cap RB & FP	88K78.73	3	3/8" or 'V'	0.368				0.342	3/8" or 'V'	0.368				0.342
> Penn State	Capri Compact RB	PKPAR10B2	3	10 mm or 25/64"	0.385	1.62	0.492	0.492	0.357	10 mm or 25/64"	0.385	2.28	0.401	0.401	0.357
> Penn State	Capri Compact FP	PKPAR10B2	3	10 mm or 25/64"	0.385	1.62	0.492	0.492	0.357	10 mm or 25/64"	0.385	1.50	0.401	0.401	0.357
Penn State	Classic & Elite Screw Cap RB & FP	PKPAR10B2	3	10 mm or 25/64"	0.385	1.81	0.492	0.492	0.357	10 mm or 25/64"	0.385	2.28	0.401	0.401	0.357
> Rockler	Flat Top Screw Cap RB & FP	21893	3	3/8" or 'V'	0.368	1.98	0.492	0.492	0.342	3/8" or 'V'	0.368	1.98	0.450	0.450	0.342
Woodcraft	Classic American Screw Cap RB & FP	06S89	3	3/8" or 'V'	0.368	1.98	0.492	0.492	0.342	3/8" or 'V'	0.368	1.98	0.450	0.450	0.342
Woodcraft	Classic American Snap Cap RB	06S89	3	3/8" or 'V'	0.368	1.98	0.492	0.492	0.342	3/8" or 'V'	0.368	1.98	0.450	0.450	0.342
> Woodcraft	Classic American Streamline Screw Cap RB & FP	06S89	3	3/8" or 'V'	0.368	1.98	0.492	0.492	0.342	3/8" or 'V'	0.368	2.42	0.450	0.450	0.342
Craft Supply USA	Executive Screw Cap RB & FP	155-5102	3	27/64"	0.410	1.73	0.480	0.507	0.381	27/64"	0.410	2.92	0.478	0.466	0.381
Arizona Silhouette	Baron Screw Cap RB	19A	3	15/32"	0.450	1.81	0.535	0.535	0.429	10 mm or 25/64"	0.385	2.09	0.482	0.482	0.357
> Lee Valley	Baron Screw Cap RB & FP	88K78.82	3	15/32"	0.450	1.81	0.535	0.535	0.429	10 mm or 25/64"	0.385	2.09	0.482	0.482	0.357
Penn State	Tycoon Screw Cap RB & FP	PKTYBU	3	15/32"	0.450	1.81	0.563	0.535	0.429	10 mm or 25/64"	0.385	2.09	0.482	0.482	0.357
> William Wood-Write	Baron Screw Cap RB & FP	41-19A	3	15/32"	0.450	1.81	0.535	0.535	0.429	10 mm or 25/64"	0.385	2.09	0.482	0.482	0.357
Woodcraft	Navigator Screw Cap RB	146019	3	15/32"	0.450	1.81	0.535	0.535	0.429	10 mm or 25/64"	0.385	2.09	0.482	0.482	0.357
Arizona Silhouette	Baron Tropical Screw Cap RB	51A	3	15/32"	0.450	1.81	0.563	0.563	0.429	10 mm or 25/64"	0.385	2.09	0.492	0.492	0.357
Woodcraft	Navigator Tropical Screw Cap RB	147483	3	15/32"	0.450	1.81	0.563	0.563	0.429	10 mm or 25/64"	0.385	2.09	0.492	0.492	0.357
> Arizona Silhouette	Sedona Screw Cap RB & FP	19A	3	15/32"	0.450	1.81	0.535	0.535	0.429	10 mm or 25/64"	0.385	2.09	0.482	0.482	0.357
> William Wood-Write	Sedona Screw Cap RB & FP	41-19A	3	15/32"	0.450	1.81	0.535	0.535	0.429	10 mm or 25/64"	0.385	2.09	0.482	0.482	0.357
> Woodcraft	Sedona Screw Cap RB & FP	146019	3	15/32"	0.450	1.81	0.535	0.535	0.429	10 mm or 25/64"	0.385	2.09	0.482	0.482	0.357
Arizona Silhouette	Gran Torino Screw Cap BP	AZSB-1A	3	x	x	x	x	x	x	10.5mm or 13/32"	0.400	3.35	0.512	0.478	0.380
Craft Supply USA	Zen Magnetic Cap BP	050-4439	3	x	x	x	x	x	x	10.5mm or 13/32"	0.400	3.35	0.512	0.512	0.380
Rockler	2007 Screw Cap RB	28239	3	x	x	x	x	x	x	10.5mm or 13/32"	0.400	3.35	0.512	0.478	0.380
> Bear Tooth Woods	Vail RB & FP	VAILE	3	12.5mm or 0.492	0.483	1.90	0.590	0.590	0.460	10.5mm or 13/32"	0.400	2.09	0.512	0.480	0.380
Craft Supply USA	Jr Gentleman 2 Screw Cap RB & FP	050-4037	3	12.5mm or 0.492	0.483	1.89	0.567	0.567	0.460	10.5mm or 13/32"	0.400	2.09	0.512	0.480	0.380
Craft Supply USA	Jr Statesman 2 Screw Cap RB & FP	050-4037	3	12.5mm or 0.492	0.483	1.89	0.567	0.567	0.460	10.5mm or 13/32"	0.400	2.09	0.512	0.480	0.380
Craft Supply USA	Jr Retro Screw Cap RB & FP	050-4037	3	12.5mm or 0.492	0.483	1.89	0.567	0.567	0.460	10.5mm or 13/32"	0.400	2.09	0.512	0.480	0.380
Craft Supply USA	Jr Emperor Screw Cap RB & FP	050-4199	3	12.5mm or 0.492	0.483	1.89	0.567	0.567	0.460	10.5mm or 13/32"	0.400	2.09	0.512	0.512	0.380

# Pen Kit References for Bushings and Tubes

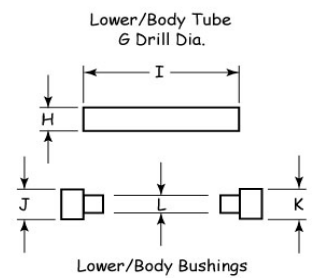
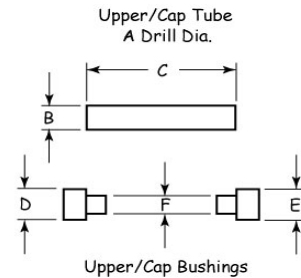
W Racinowski WRACINOWSKI at WI dot RR dot COM Revised 7-23-2010



Cells that are Yellow require dimensions.

Tolerances for:  
2 place Dims is +/- .01  
3 Place Dims is +/- .003

Typical Mandrel Sizes  
A - .247 Dia.  
B - .291 Dia.



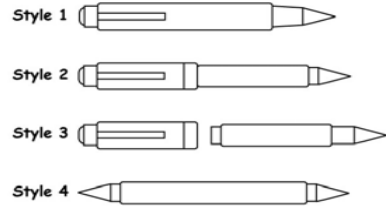
← Revisions or Additions

Pen Kit Supplier	Pen Kit Description Grouped by Styling	Suppliers Bushing Set	Pen Style	Upper / Cap Tube			Upper / Cap Bushings			Lower / Body Tube			Lower / Body Bushing		
				A Drill Dia.	B Dia.	C Length	D Dia.	E Dia.	F Dia.	G Drill Dia.	H Dia.	I Length	J Dia.	K Dia.	L Dia.
Penn State	Majestic Jr Screw Cap RB	PKMAJJRBU	3	12.5mm or 0.492	0.483	1.90	0.550	0.576	0.460	10.5mm or 13/32"	0.400	2.09	0.516	0.516	0.380
Rockler	Jr Gentleman II Screw Cap RB	23571	3	12.5mm or 0.492	0.483	1.89	0.567	0.567	0.460	10.5mm or 13/32"	0.400	2.09	0.512	0.480	0.380
Craft Supply USA	Panache Screw Cap BP	050-4011	3	12.5mm or 0.492	0.483	2.02	0.670	0.570	0.460	10.5mm or 13/32"	0.400	2.91	0.570	0.788	0.378
Rockler	Panache Screw Cap BP	22907	3	12.5mm or 0.492	0.483	2.02	0.670	0.570	0.460	10.5mm or 13/32"	0.400	2.91	0.570	0.788	0.378
> Penn State	Art Deco RB & FP	PKARTABU	3	12.5mm or 0.492	0.483	1.62	0.552	0.607	0.460	10.5mm or 13/32"	0.400	2.00	0.513	0.513	0.380
> Penn State	Nouveau Sceptre Screw Cap RB & FP	PKDBBUA	3	12.5mm or 0.492	0.483	1.69	0.648	0.575	0.460	10.5mm or 13/32"	0.400	2.09	0.513	0.513	0.380
> Penn State	Nouveau Sceptre Twist BP	PKDBBUB	2	12.5mm or 0.492	0.483	1.69	0.648	0.575	0.460	10.5mm or 13/32"	0.400	2.19	0.513	0.458	0.380
Arizona Silhouette	Churchill Screw Cap RB	16B	3	33/64"	0.510	1.69	0.590	0.590	0.494	31/64"	0.470	1.97	0.536	0.536	0.450
> Bear Tooth Woods	Churchill Screw Cap RB & FP	16B	3	33/64"	0.510	1.69	0.590	0.590	0.494	31/64"	0.470	1.97	0.536	0.536	0.450
Berea	Churchill Screw Cap RB & FP	16B	3	33/64"	0.510	1.69	0.590	0.590	0.494	31/64"	0.470	1.97	0.536	0.536	0.450
Penn State	Apollo Elite Screw Cap RB & FP	PKAPRBU	3	9/16"		1.69	0.625	0.625		12.5mm or 0.492	0.483	2.13	0.536	0.536	0.460
> Penn State	Apollo Infinity Screw Cap RB & FP	PKAPR2BU	3	9/16"		1.69	0.625	0.642		12.5mm or 0.492	0.483	2.13	0.54	0.555	0.460
Rockler	Churchill Screw Cap RB	25348 or 16B	3	33/64"	0.510	1.69	0.590	0.590	0.494	31/64"	0.470	1.97	0.536	0.536	0.450
> William Wood-Write	Churchill Screw Cap RB & FP	3965-16B	3	33/64"	0.510	1.69	0.590	0.590	0.494	31/64"	0.470	1.97	0.536	0.536	0.450
Woodcraft	Churchill Screw Cap RB	144635	3	33/64"	0.510	1.69	0.590	0.590	0.494	31/64"	0.470	1.97	0.536	0.536	0.450
Arizona Silhouette	EL Grande Twist Cap BP / Pencil	16B	2	33/64"	0.510	1.69	0.590	0.590	0.494	31/64"	0.470	1.97	0.536	0.536	0.450
Arizona Silhouette	EL Grande Screw Cap RB	16B	3	33/64"	0.510	1.69	0.590	0.590	0.494	31/64"	0.470	1.97	0.536	0.536	0.450
> Bear Tooth Woods	EL Grande Twist Cap BP / Pencil	16B	2	33/64"	0.510	1.69	0.590	0.590	0.494	31/64"	0.470	1.97	0.536	0.536	0.450
> Bear Tooth Woods	EL Grande Screw Cap RB & FP	16B	3	33/64"	0.510	1.69	0.590	0.590	0.494	31/64"	0.470	1.97	0.536	0.536	0.450
Berea	EL Grande Twist Cap BP / Pencil	16B	2	33/64"	0.510	1.69	0.590	0.590	0.494	31/64"	0.470	1.97	0.536	0.536	0.450
Berea	EL Grande and Elite Screw Cap RB & FP	16B	3	33/64"	0.510	1.69	0.590	0.590	0.494	31/64"	0.470	1.97	0.536	0.536	0.450
> Craft Supply USA	Old Ligero Screw Cap RB	050-4055	3	17/32"	0.510	1.69	0.590	0.590	0.494	31/64"	0.470	1.97	0.536	0.536	0.450
> Lee Valley	EL Grande Screw Cap RB & FP	88K78.75	3	33/64"	0.510	1.69	0.590	0.590	0.494	31/64"	0.470	1.97	0.536	0.536	0.450
Penn State	Olympian Elite Screw Cap RB	PKOLBU	3	33/64"	0.510	1.69	0.590	0.590	0.494	31/64"	0.470	2.00	0.536	0.536	0.450
Penn State	Olympian Elite 2 Screw Cap RB	PKOL2BU	3	33/64"	0.510	1.69	0.590	0.655	0.494	31/64"	0.470	2.00	0.536	0.536	0.450
Rockler	EL Grande Screw Cap RB & FP	25348 or 16B	3	33/64"	0.510	1.69	0.590	0.590	0.494	31/64"	0.470	1.97	0.536	0.536	0.450
> William Wood-Write	EL Grande Screw Cap RB & FP	3965-16B	3	33/64"	0.510	1.69	0.590	0.590	0.494	31/64"	0.470	1.97	0.536	0.536	0.450
Woodcraft	EL Grande Screw Cap RB & FP	144635	3	33/64"	0.510	1.69	0.590	0.590	0.494	31/64"	0.470	1.97	0.536	0.536	0.450
Arizona Silhouette	Cambridge / Ultra Screw Cap RB	16B	3	33/64"	0.510	1.69	0.590	0.590	0.494	31/64"	0.470	1.97	0.536	0.536	0.450
> Bear Tooth Woods	Cambridge / Hybrid Screw Cap RB & FP	16B	3	33/64"	0.510	1.69	0.590	0.590	0.494	31/64"	0.470	1.97	0.536	0.536	0.450
Berea	Cambridge / Hybrid Screw Cap RB	16B	3	33/64"	0.510	1.69	0.590	0.590	0.494	31/64"	0.470	1.97	0.536	0.536	0.450
> Lee Valley	Cambridge Screw Cap RB & FP	88K78.75	3	33/64"	0.510	1.69	0.590	0.590	0.494	31/64"	0.470	1.97	0.536	0.536	0.450
> William Wood-Write	Cambridge / Canadiana Screw Cap RB & FP	3965-16B	3	33/64"	0.510	1.69	0.590	0.590	0.494	31/64"	0.470	1.97	0.536	0.536	0.450
Woodcraft	Cambridge / Hybrid Screw Cap RB	144635	3	33/64"	0.510	1.69	0.590	0.590	0.494	31/64"	0.470	1.97	0.536	0.536	0.450
Craft Supply USA	Imperial Screw Cap RB & FP	050-4198	3	14mm or 35/64"	0.539	1.90	0.616	0.616	0.510	15/32"	0.450	1.97	0.552	0.552	0.429
Craft Supply USA	Lotus Screw Cap RB & FP	050-4198	3	14mm or 35/64"	0.539	1.65	0.616	0.616	0.510	15/32"	0.450	1.74	0.552	0.552	0.429

# Pen Kit References for Bushings and Tubes

W Racinowski WRACINOWSKI at WI dot RR dot COM Revised 7-23-2010

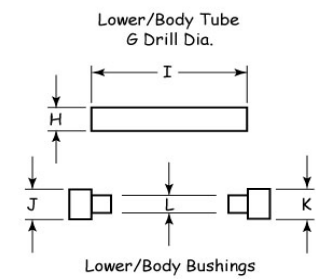
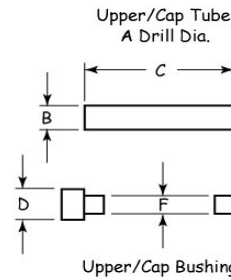
← Revisions or Additions



Cells that are Yellow require dimensions.

**Tolerances for:**  
2 place Dims is +/- .01  
3 Place Dims is +/- .003

**Typical Mandrel Sizes**  
A - .247 Dia.  
B - .291 Dia.



Pen Kit Supplier	Pen Kit Description Grouped by Styling	Suppliers Bushing Set	Pen Style	Upper / Cap Tube			Upper / Cap Bushings			Lower / Body Tube			Lower / Body Bushing		
				A Drill Dia.	B Dia.	C Length	D Dia.	E Dia.	F Dia.	G Drill Dia.	H Dia.	I Length	J Dia.	K Dia.	L Dia.
Arizona Silhouette	El Presidente Screw Cap RB	50A	3	14mm or 35/64"	0.539	1.97	0.621	0.667	0.510	31/64"	0.472	2.33	0.609	0.550	0.447
Woodcraft	Robusto Screw Cap RB (Old)	144983	3	14mm or 35/64"	0.539	1.97	0.621	0.667	0.510	31/64"	0.472	2.33	0.609	0.550	0.447
> Arizona Silhouette	El Toro Screw Cap FP (Short El Presidente)	50A	3	14mm or 35/64"	0.539	1.85	0.621	0.667	0.510	31/64"	0.472	1.40	0.609	0.550	0.447
> Lee Valley	El Toro Screw Cap FP	88K78.81	3	14mm or 35/64"	0.539	1.85	0.621	0.667	0.510	31/64"	0.472	1.40	0.609	0.550	0.447
> William Wood-Write	El Toro Screw Cap FP	4528-80A	3	14mm or 35/64"	0.539	1.85	0.621	0.667	0.510	31/64"	0.472	1.40	0.609	0.550	0.447
Craft Supply USA	Gentleman Screw Cap RB & FP	050-4035	3	37/64"	0.571	2.05	0.650	0.650	0.547	15/32"	0.450	2.37	0.598	0.525	0.427
Craft Supply USA	Statesman Screw Cap RB & FP	050-4035	3	37/64"	0.571	2.05	0.650	0.650	0.547	15/32"	0.450	2.37	0.598	0.525	0.427
Craft Supply USA	Emperor Screw Cap RB & FP	050-4135	3	37/64"	0.571	1.97	0.650	0.650	0.547	15/32"	0.450	2.26	0.598	0.598	0.427
Penn State	Majestic Screw Cap RB & FP	PKMAJBU	3	37/64"	0.571	1.97	0.650	0.650	0.547	15/32"	0.450	2.15	0.598	0.570	0.427
Rockler	Majestic Screw Cap RB & FP	28105	3	37/64"	0.571	1.97	0.650	0.650	0.547	15/32"	0.450	2.15	0.598	0.570	0.427

Note: All data was compiled from actual pen kits and bushings, published information and that which was supplied from other turners. I have not received any authorized data for this chart from the aforementioned suppliers of pen kits. I would like to thank the following individuals for their assistance and inspiration in completing this effort. Alex Lesniak 'Pens for College', Barry Gross, Charlie Clougherty, Chris Huybregts, David Drickhamer, David Jamieson, Douglas Dompkowski, Hans Wunch, Jim Brower, Jim McFarland, Joe Agrella, KD, Rob Wolfe, Ron Hossack and others that I may have forgotten at this moment.

Please report any additions, corrections, requested revisions or suggestions to WRACINOWSKI at WI dot RR dot COM

Use this chart with discretion as this is only meant to be used as a reference guide.