

Gino Pinto Inc.

2011 WINE BOTTLE DIMENSIONS



373 S. White Horse Pike

Hammonton, NJ 08037

Tel: (609)-561-8199 Fax: (609)-561-3429

Web: www.ginopinto.com

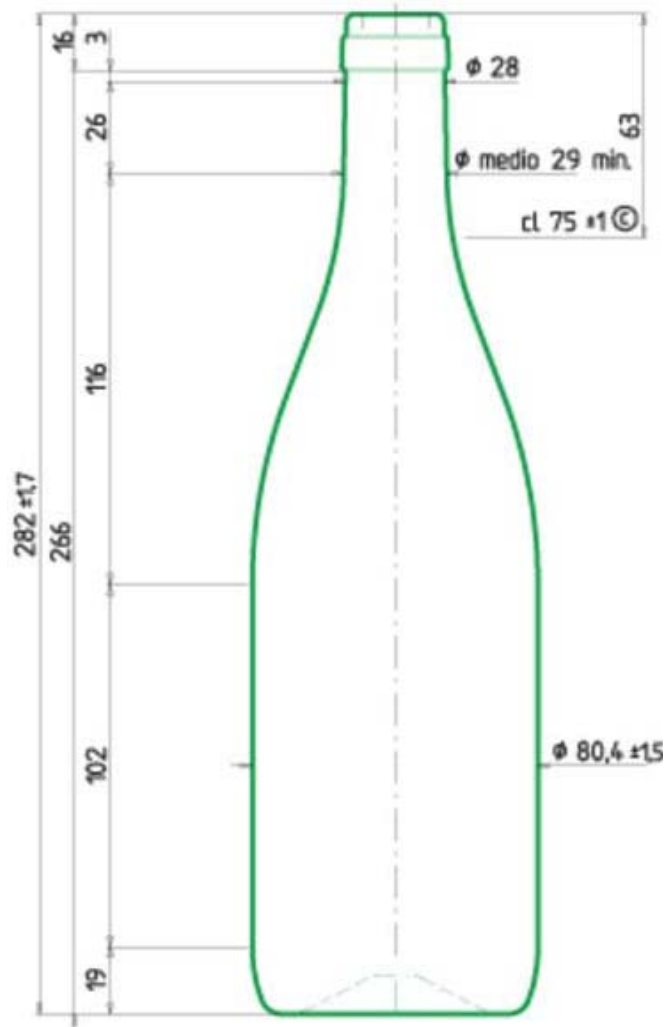
Email: info@ginopinto.com or makewine@comcast.net

Wine Bottle Dimensions

Burgundy Style, Model #EU-BURG-DL-750, 750 ML, Dead Leaf

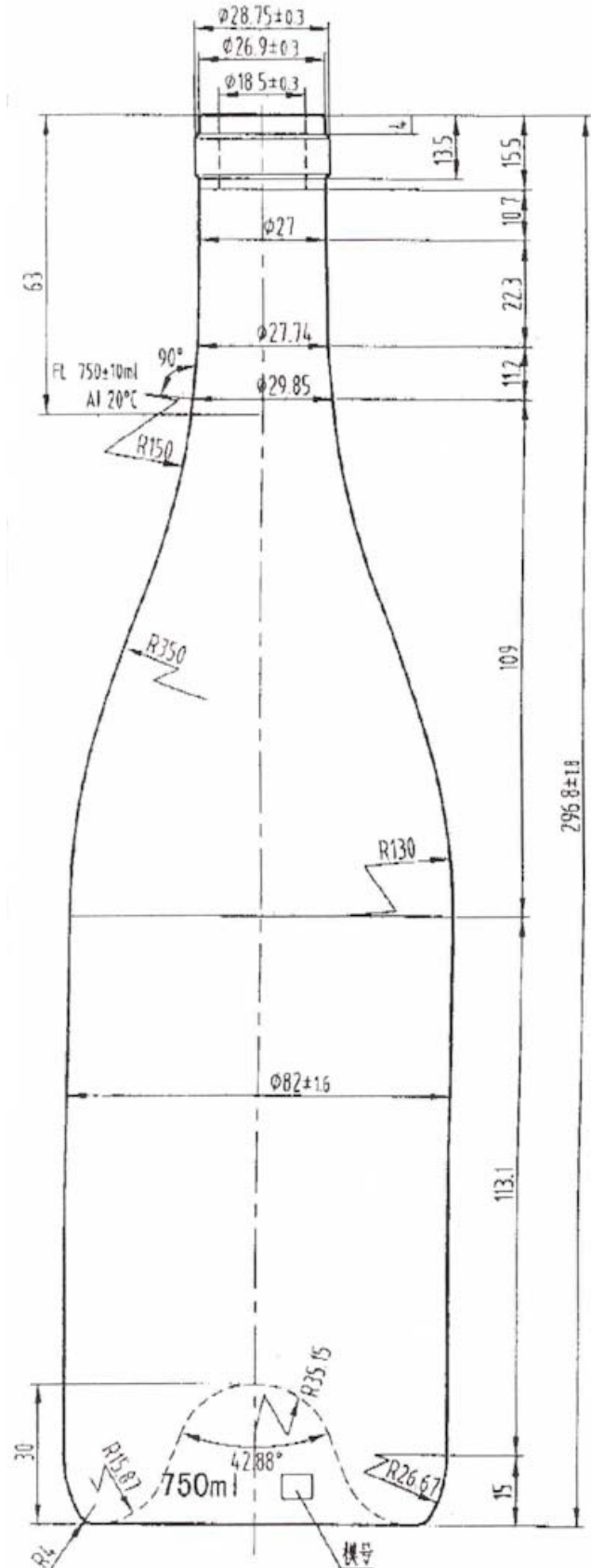
- **Weight 425 grams**

(Saint Gobain Manufacturer Code 8007741, BOURGOGNE STD 77 FA FO)



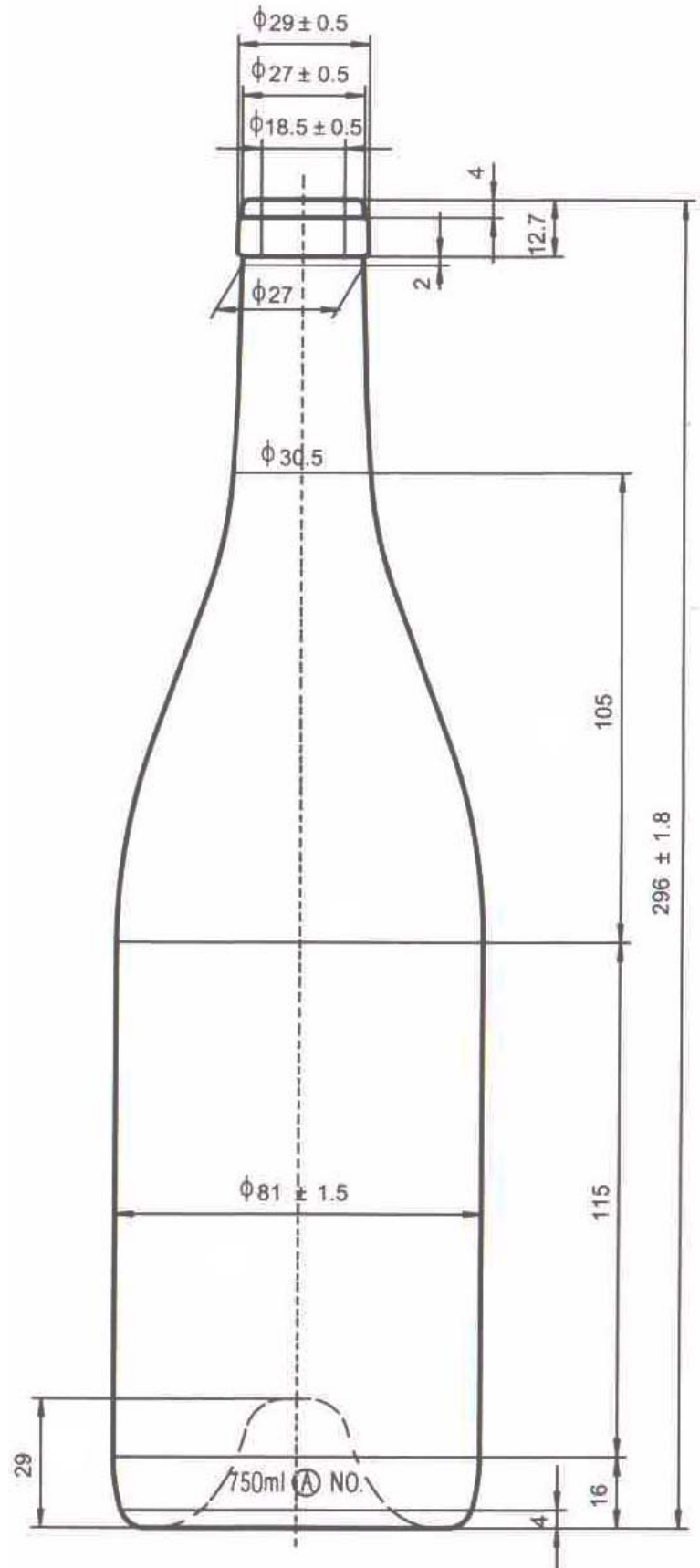
**Burgundy Style, Model #CWA-033,
750 ML, Antique Green**

-
- Technical drawing of a stepped shaft with the following dimensions:
- Overall length: $\phi 26.9 \pm 0.3$
 - Inner diameter of the long section: $\phi 18.5 \pm 0.3$
 - Outer diameter of the long section: $\phi 27$
 - Length of the long section: 9.5
 - Length of the short section: 4
 - Overall length including short section: 15.5
 - Transition radius: R0.5
 - Transition angle: 45°
 - Overall length including short section (bottom dimension): $\phi 28.75 \pm 0.3$

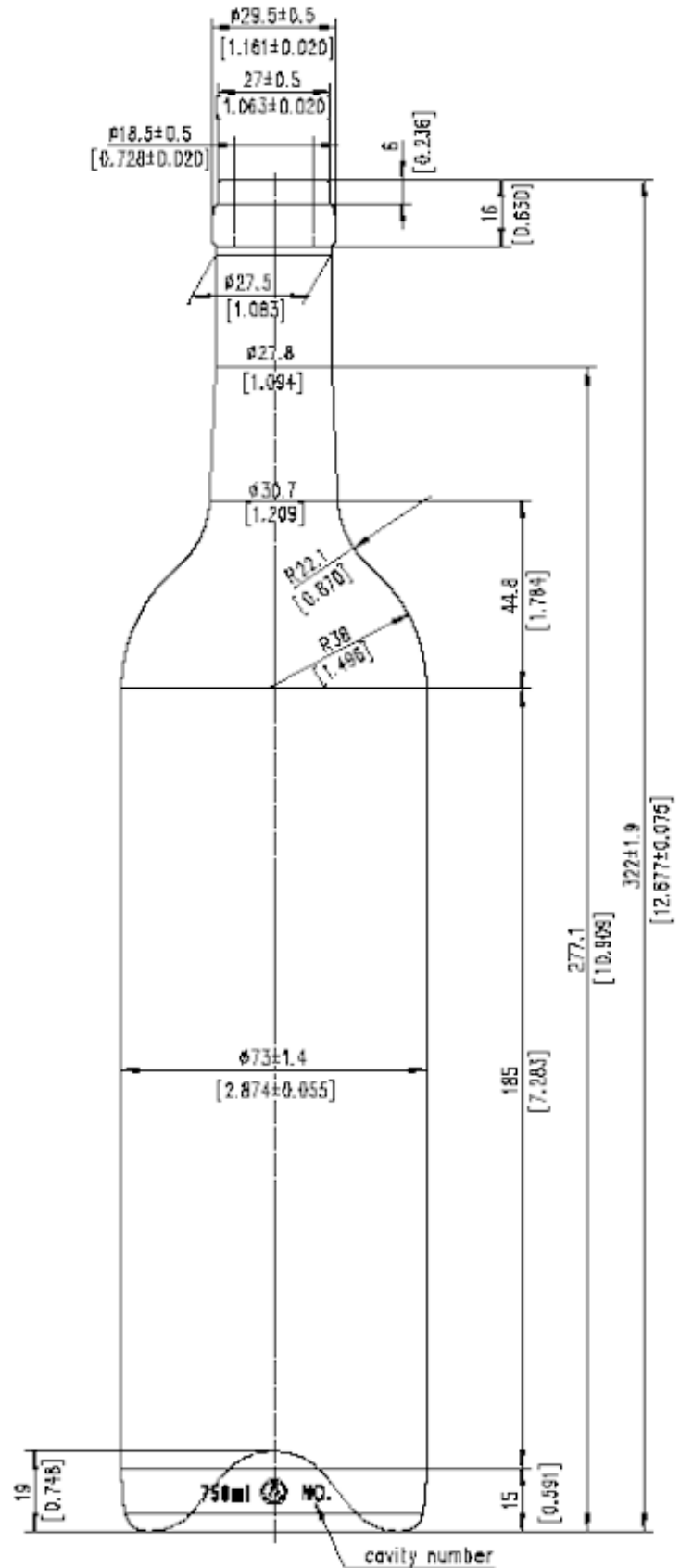


Wine Bottle Dimensions

**Burgundy Style, Model #CWD-033,
750 ML, Dead Leaf (Light)**



**Bordeaux Style, Model #CWF-028,
750 ML, Frosted Glass**

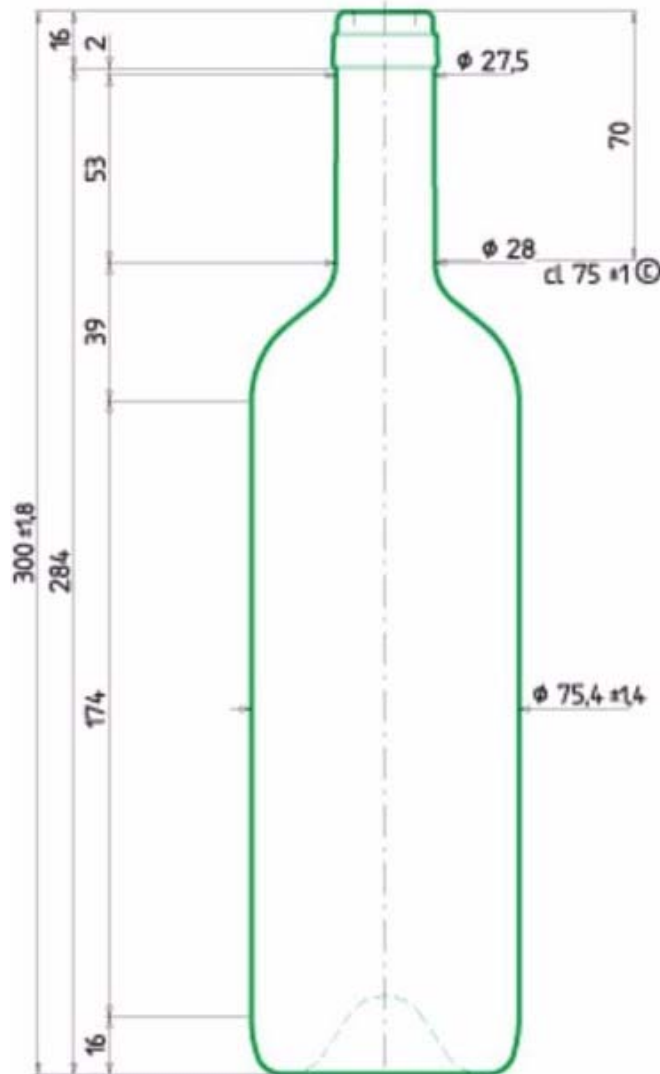


Wine Bottle Dimensions

Bordeaux Style, Model #EU-BORD-CB-750, 750 ML, Cobalt Blue

- **Weight 500 grams**

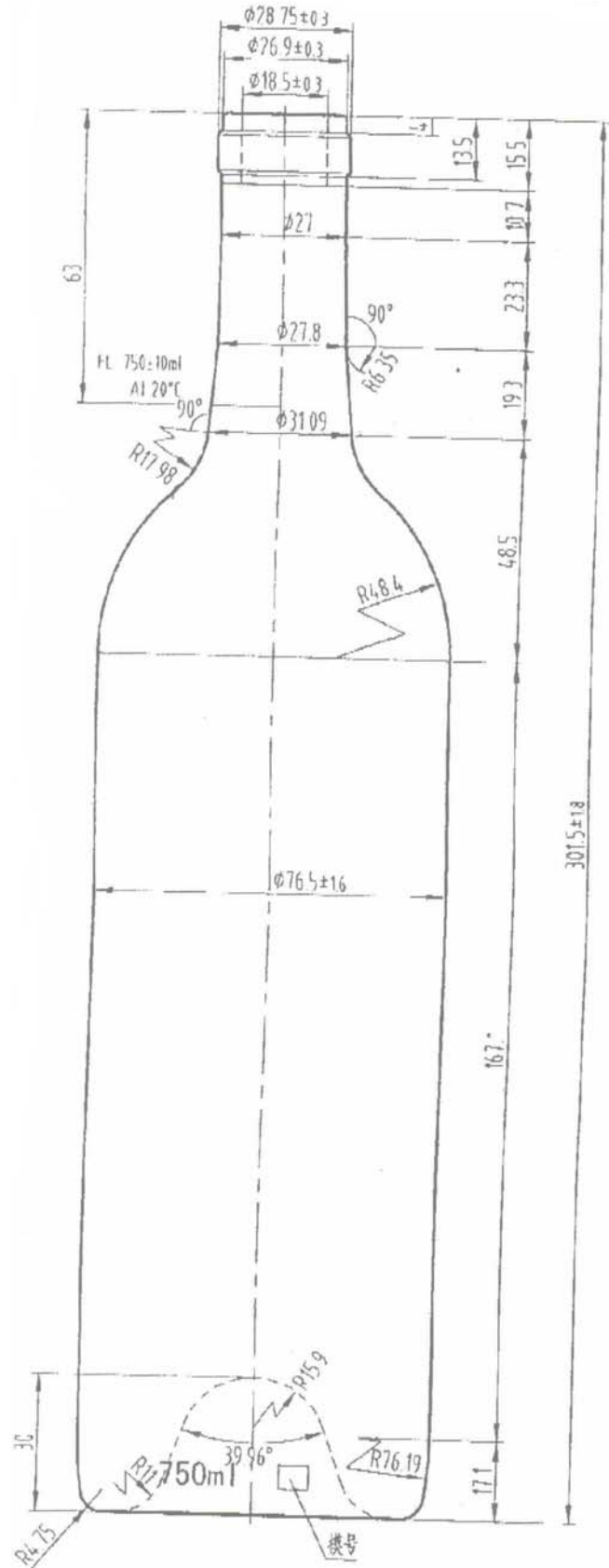
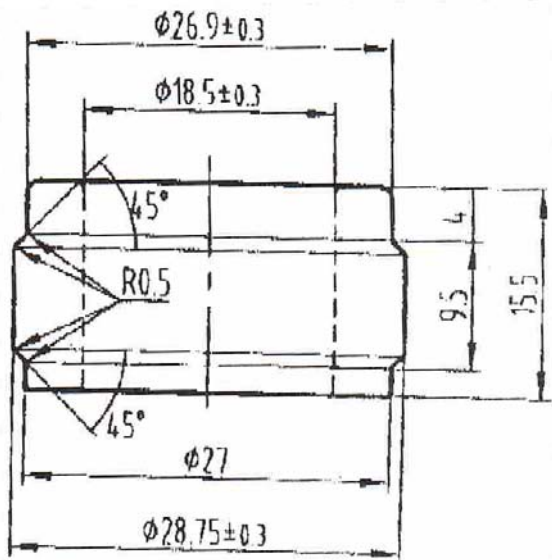
(Saint Gobain Manufacturer Code 8008189, BORDOLESE PRESTIGE 76.9 FA BL)



Wine Bottle Dimensions

**Bordeaux Style, Model #CWA-017,
750 ML, Antique Green**

- Weight 545 grams

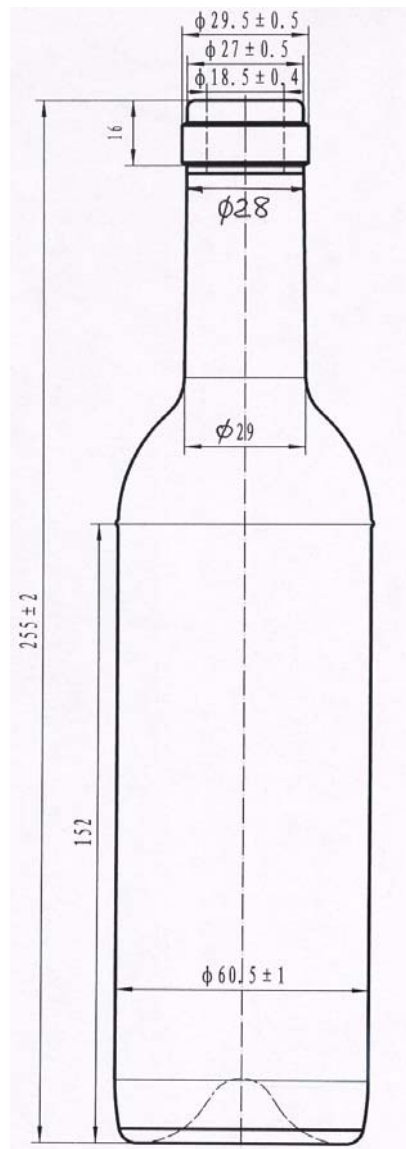


Wine Bottle Dimensions

Bordeaux Style, Model #CW-014, 375 ML, Antique Green

And

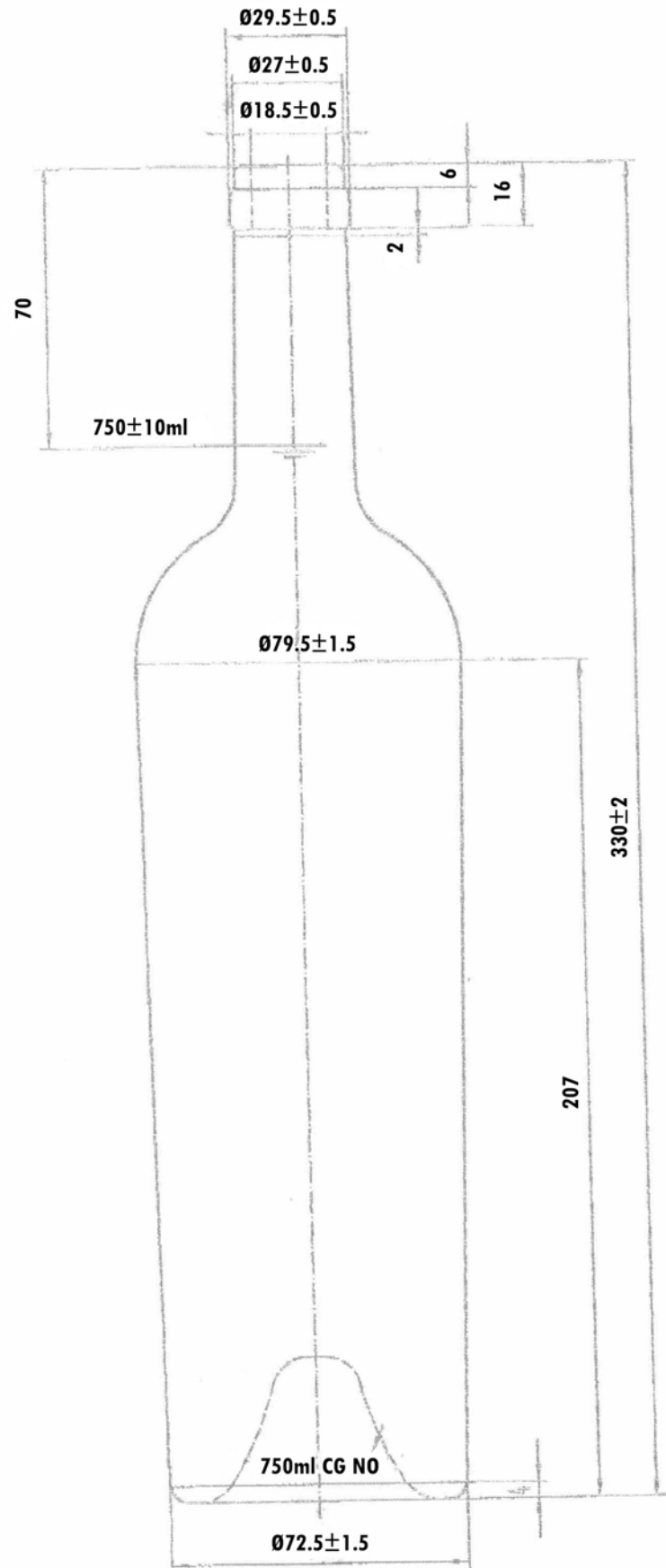
Bordeaux Style, Model #CW-024, 375 ML, Flint (Clear)



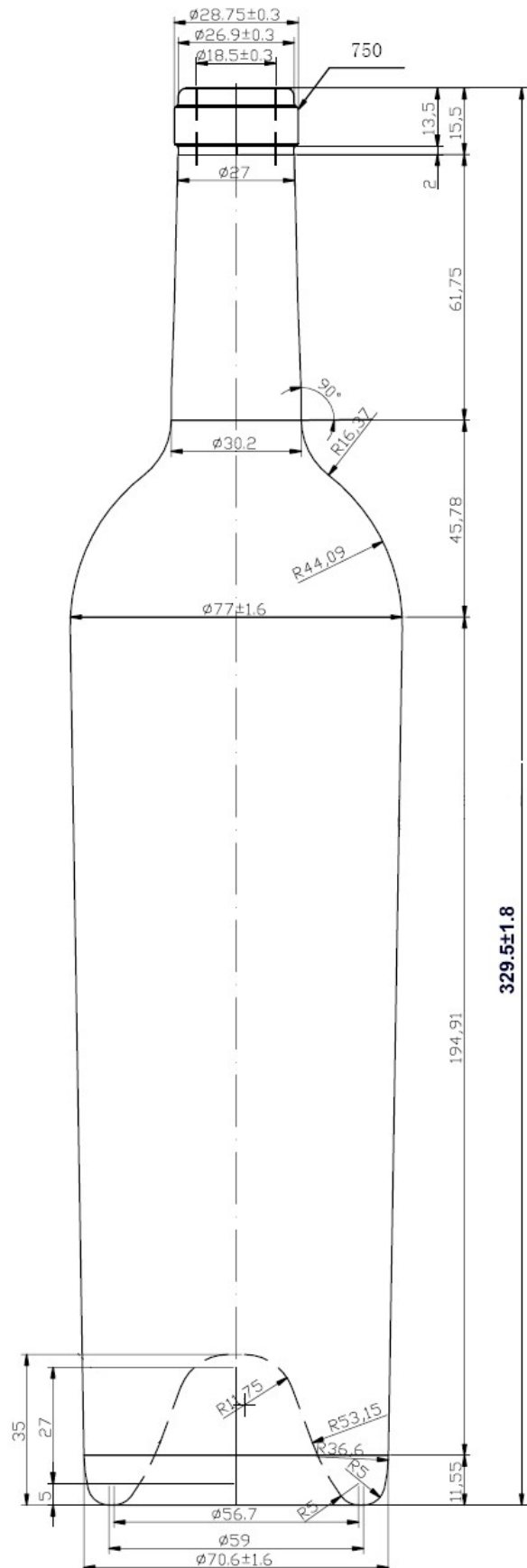
375 ml

Wine Bottle Dimensions

**Bordeaux Style, Deep Punt,
Tapered Bottle, Model #CWA-0118,
750 ML, Antique Green**



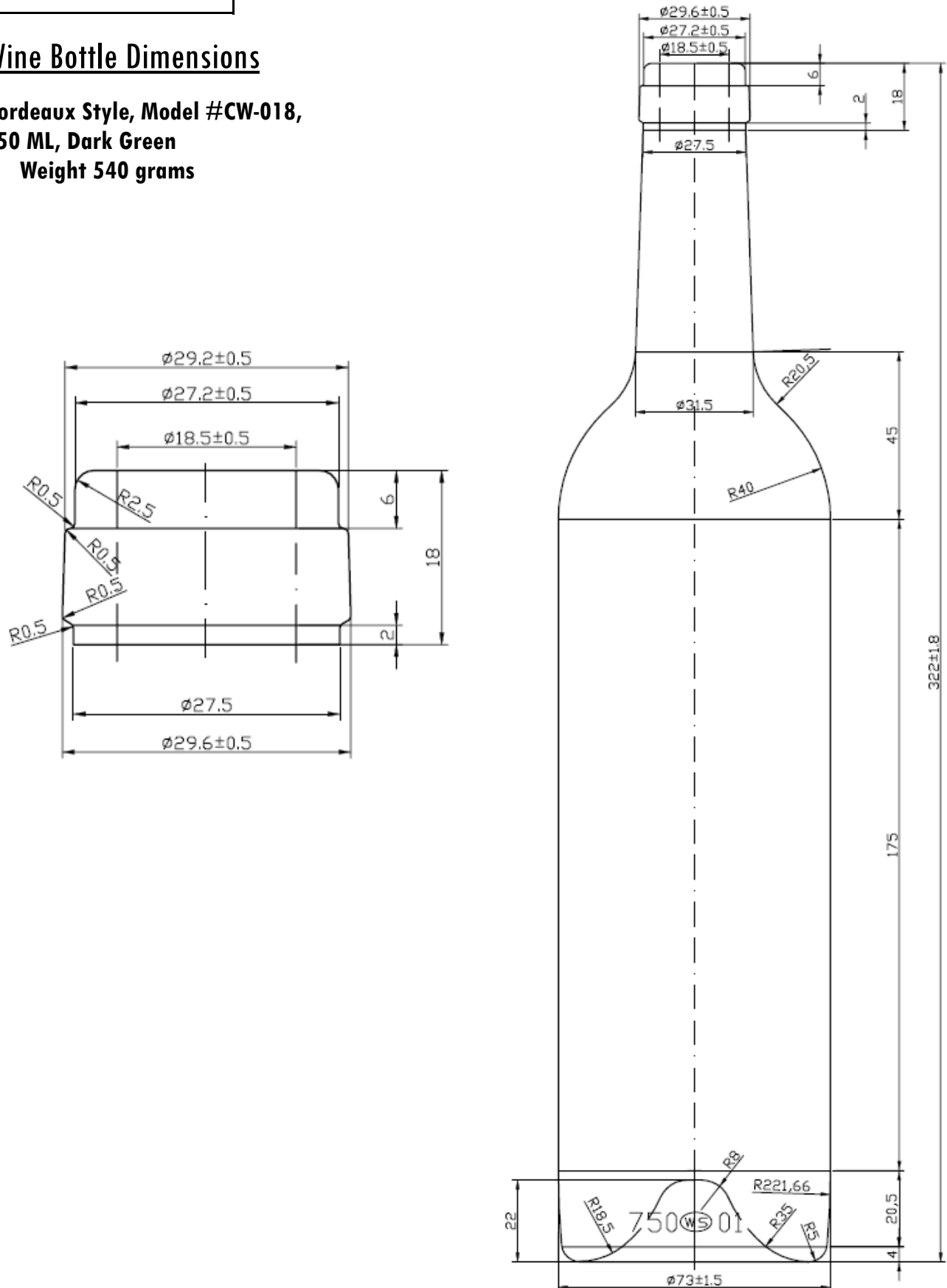
**Bordeaux Style, Deep Punt,
Tapered Bottle, Model #CWA-0128,
750 ML, Dark Green**



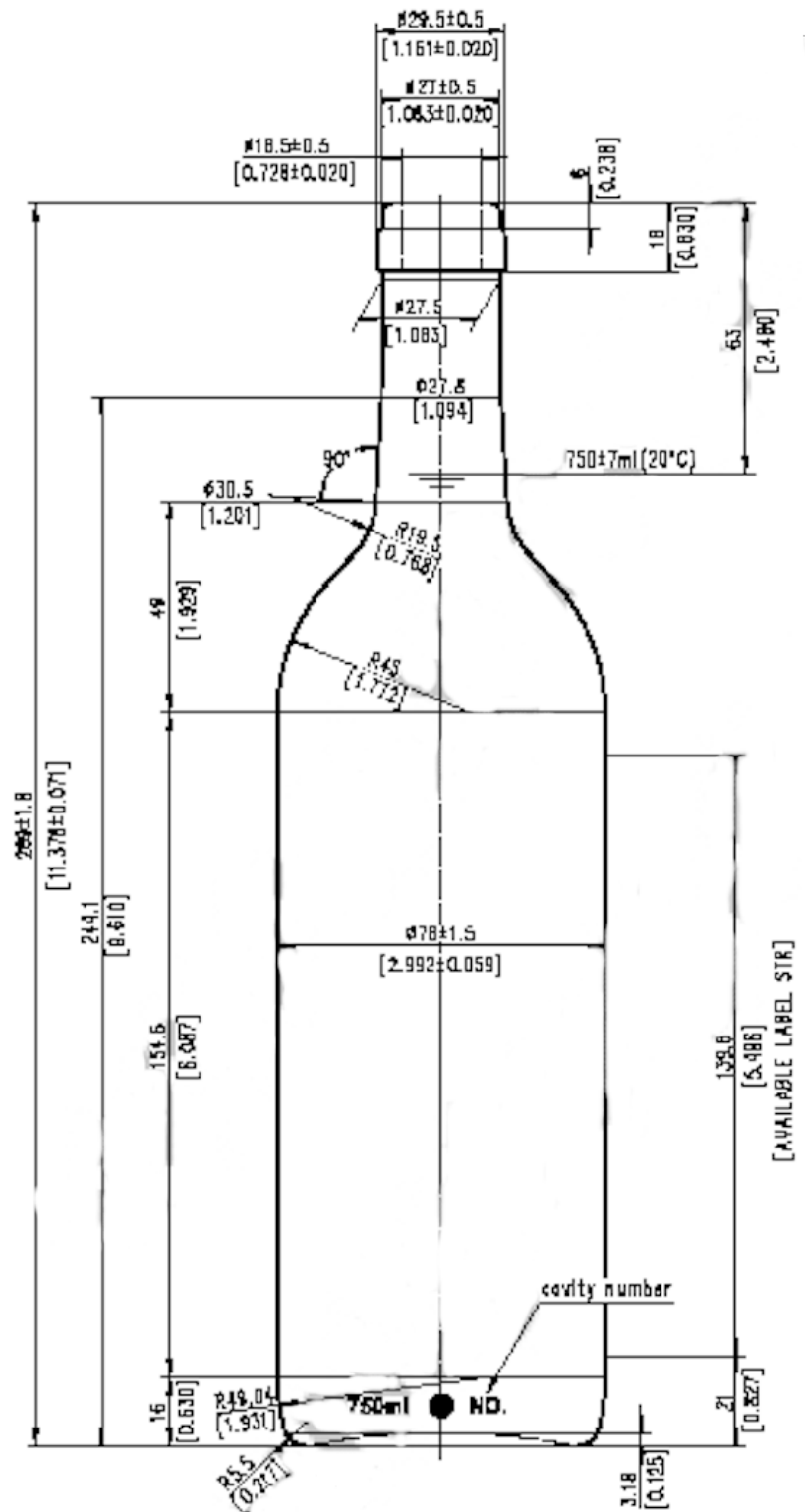
Wine Bottle Dimensions

**Bordeaux Style, Model #CW-018,
750 ML, Dark Green**

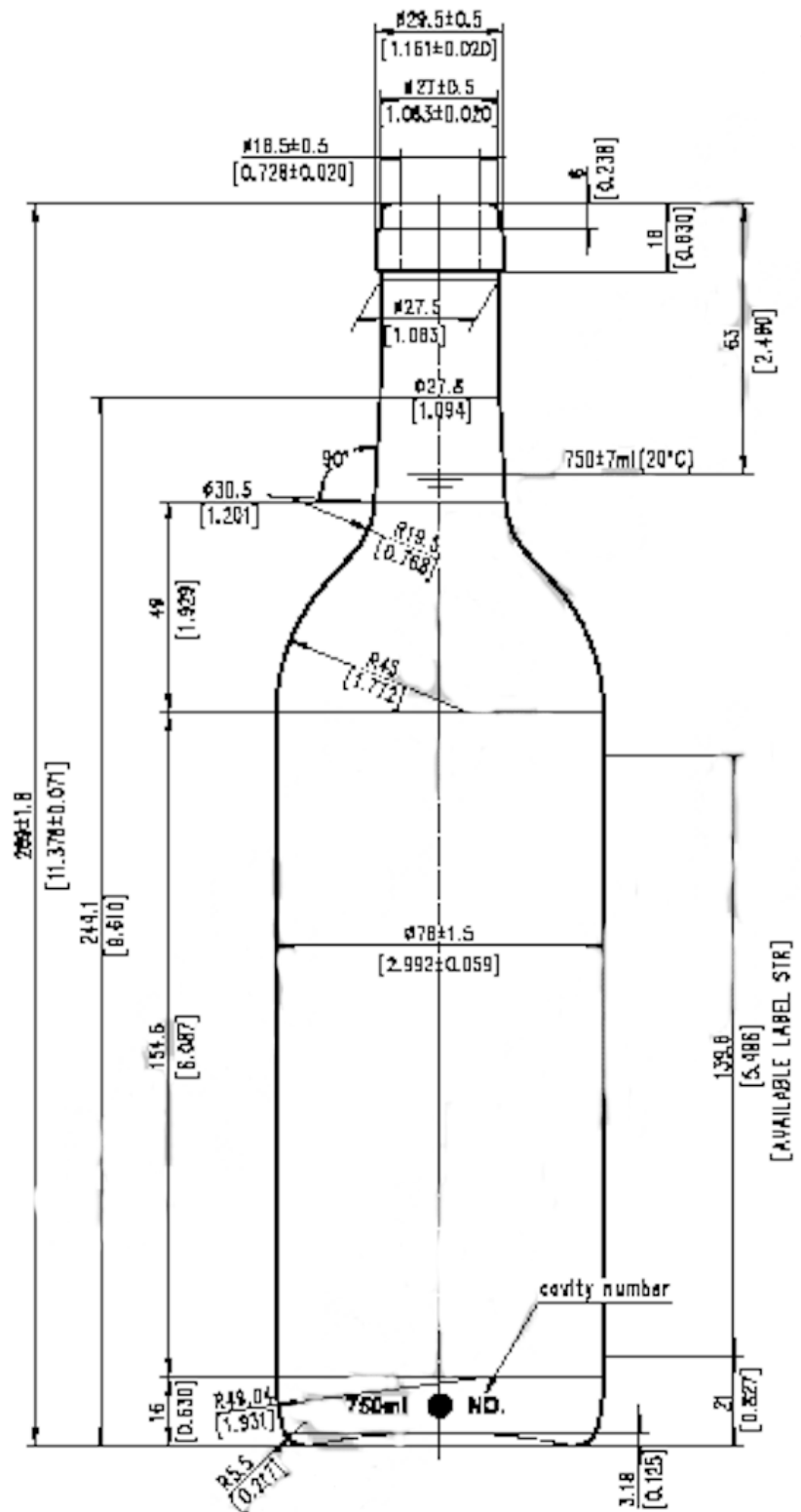
- Weight 540 grams



**Bordeaux Style, Model #CW-019,
750 ML, Dark Green**

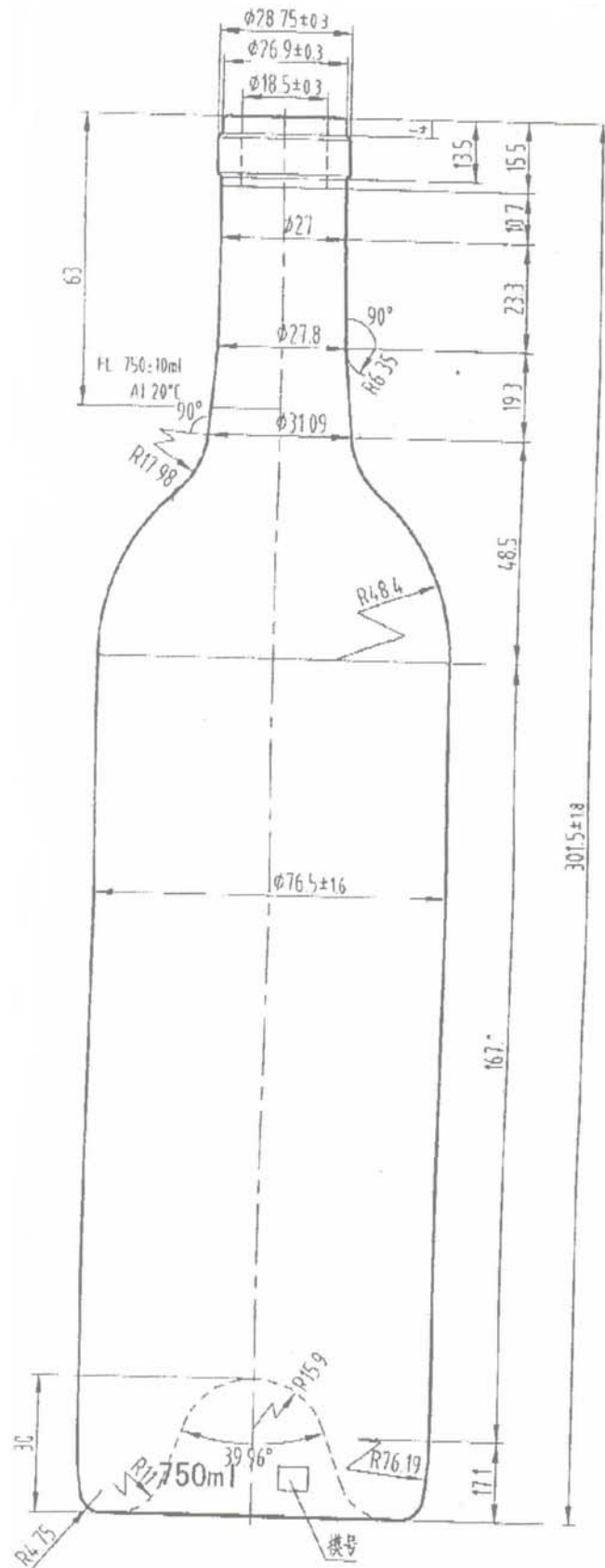


**Bordeaux Style, Model #CW-029,
750 ML, Flint (Clear)**



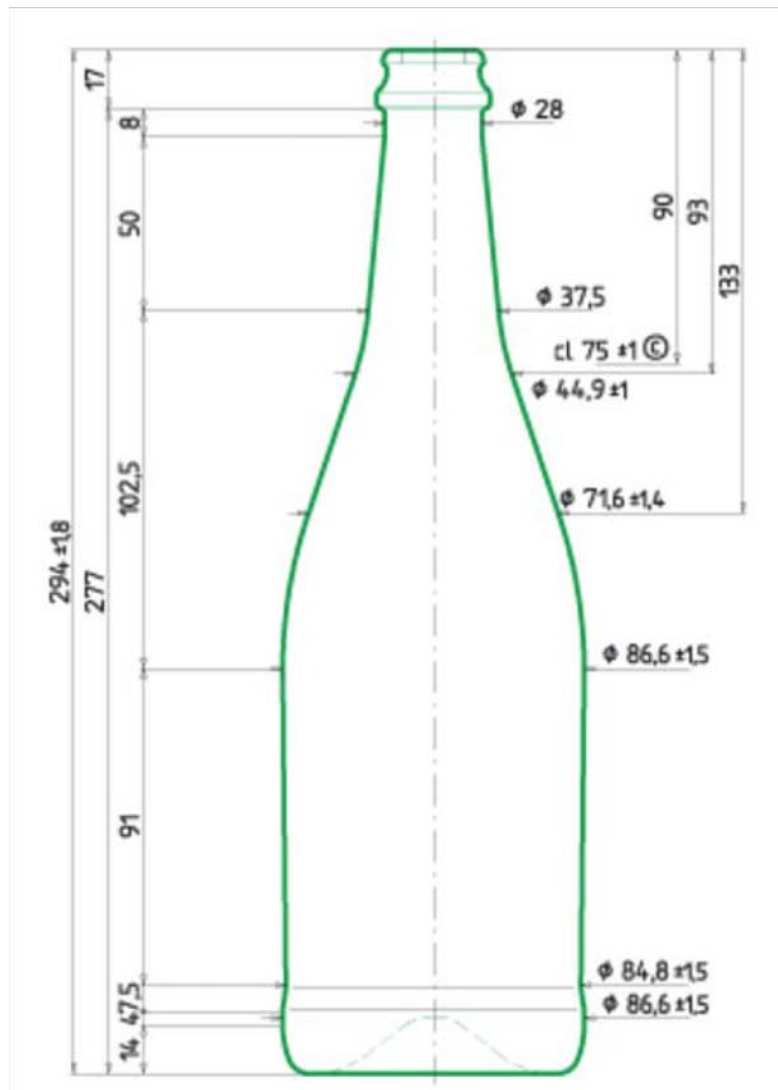
Wine Bottle Dimensions

**Bordeaux Style, Model #CW-027,
750 ML, Flint (Clear)**



Wine Bottle Dimensions

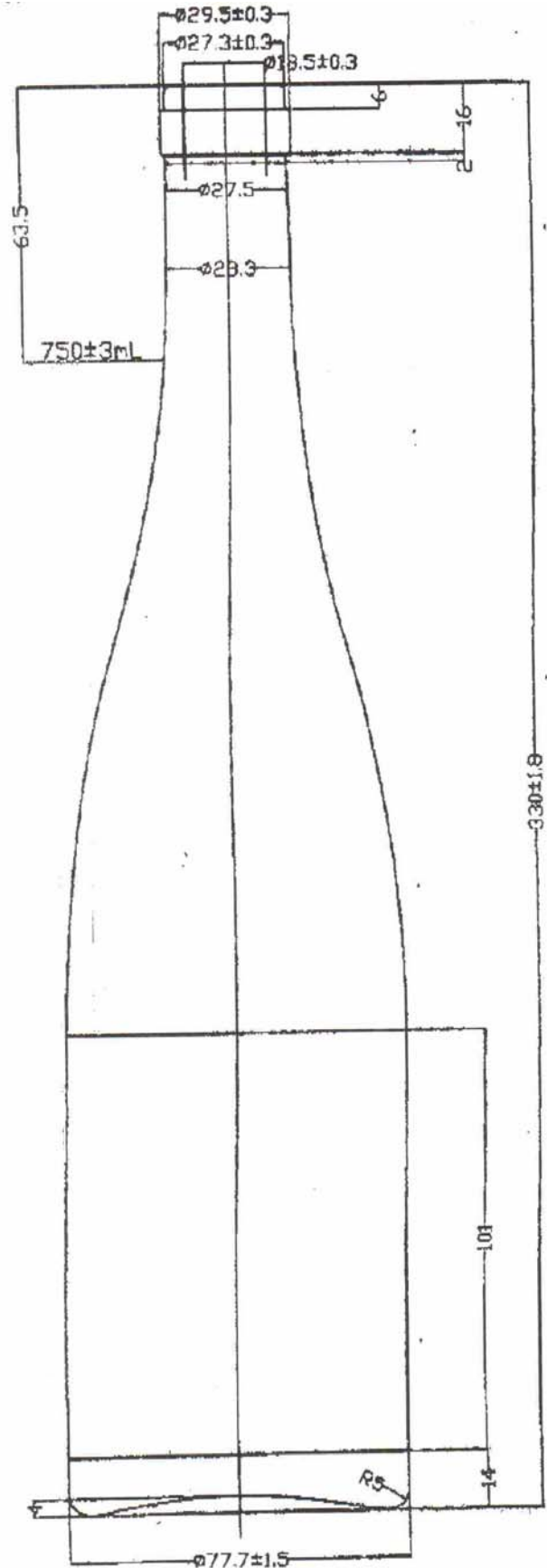
Spumante Style, Model #EU-ASTI, 750 ML, Dark Green



Wine Bottle Dimensions

Hock Style, Model #CW-0119, 750 ML,
Dark Green

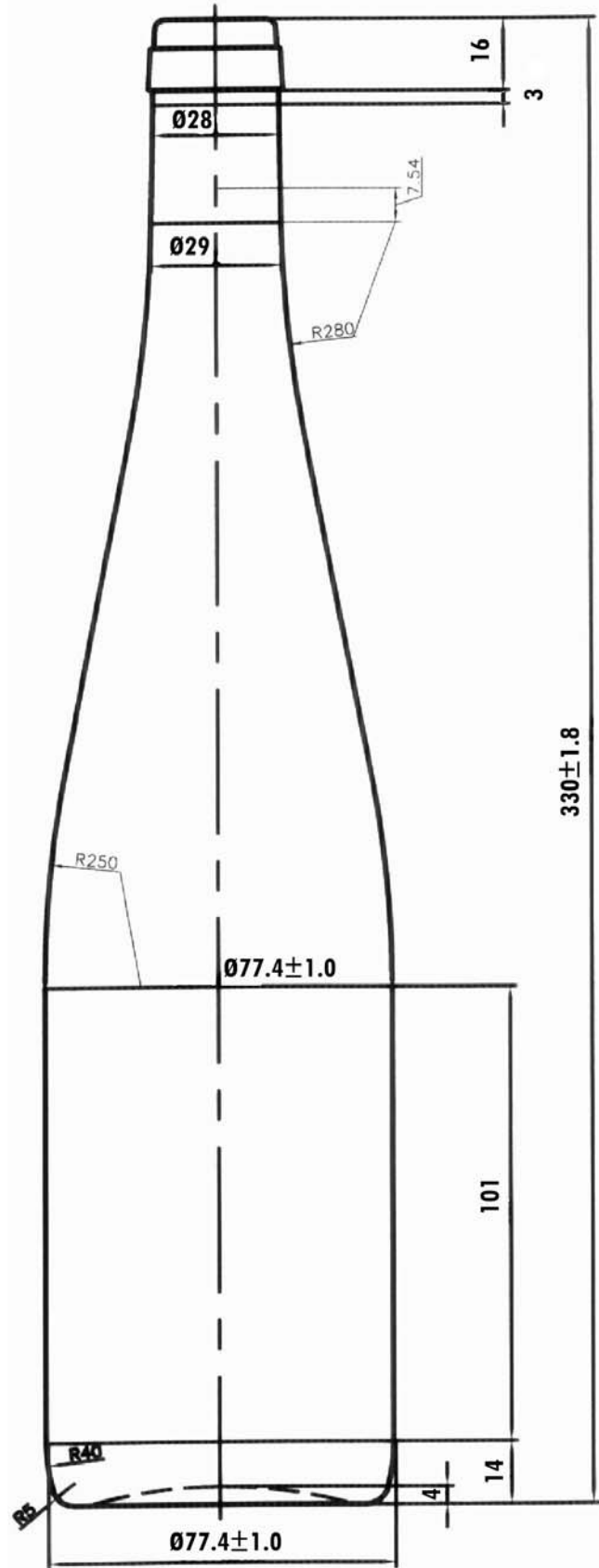
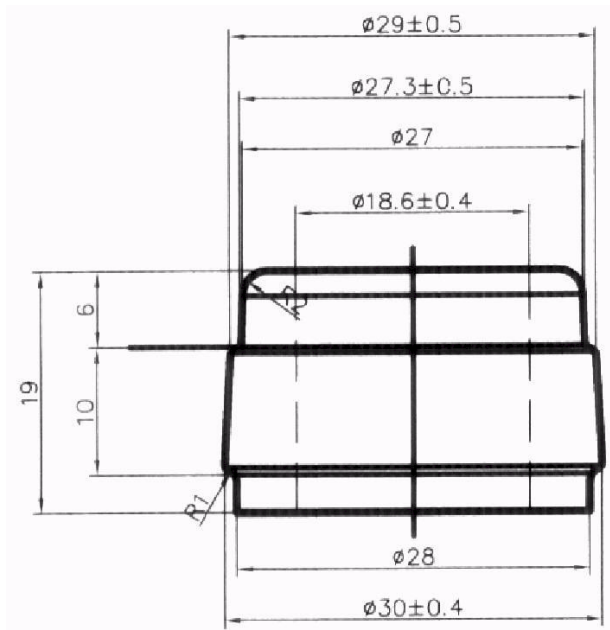
- Weight 520 grams



Wine Bottle Dimensions

**Hock Style, Model #CW-0219, 750 ML,
Flint**

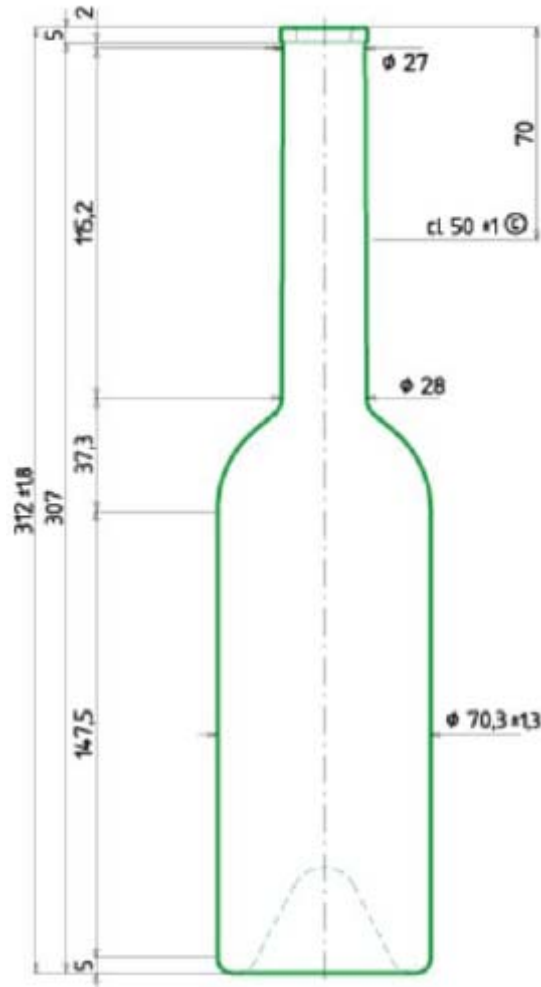
- **Weight 530 grams**



Wine Bottle Dimensions

Opera Style, Model #EU-OP-NL, 500 ML, Flint (Clear)

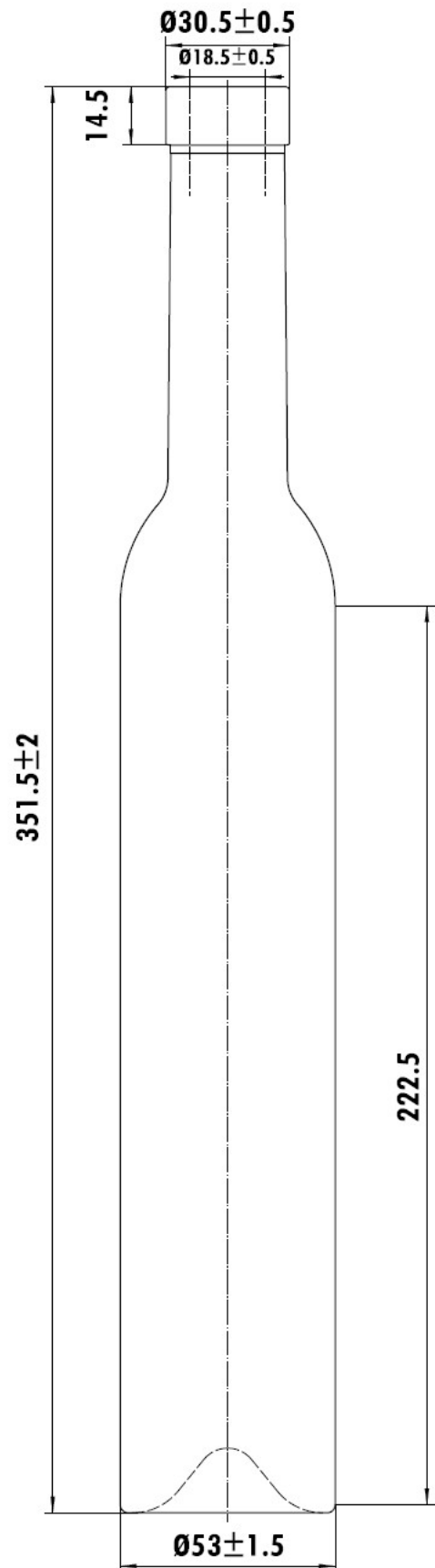
(Saint Gobain Manufacturer Code 8008503, OPERA NL 52.1 FP BN)



Wine Bottle Dimensions

Ice Wine Style, Model #CW-021, 375 ML,
Flint (Clear)

- Weight 482 grams



Wine Bottle Dimensions

**Bordeaux Style, Model #JP-1.5L-DG, 1.5
Liter Bottle, Dark Green & Flint**

- Weight 820 grams

