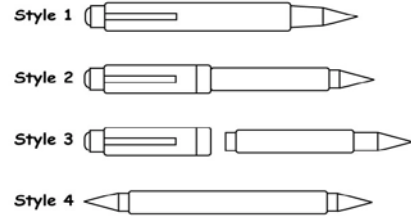
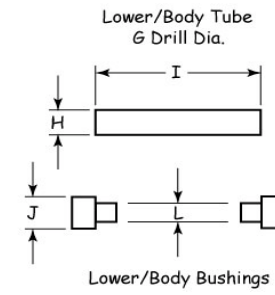
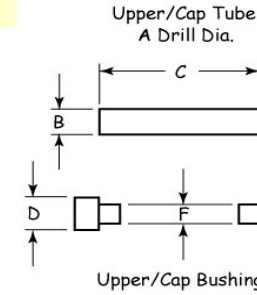


# Only Pen Kits with Missing Dimensions - Bushings and Tubes

W Racinowski WRACINOWSKI at WI dot RR dot COM Revised 11-17-09



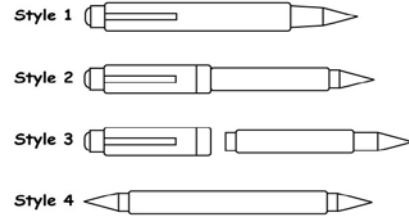
Using 3 place decimals please update this spreadsheet to provide "Caliper Measured" dimensions for yellow cells. Update fractional lengths to 2 place decimals only.



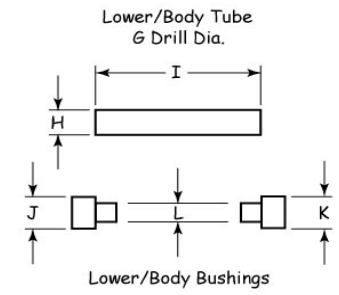
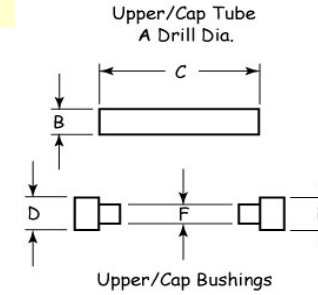
Pen #	Pen Kit Supplier	Pen Kit Description Grouped by Styling	Suppliers Bushings Set	Pen Style	Upper / Cap Tube			Upper / Cap Bushings			Lower / Body Tube			Lower / Body Bushing		
					A Drill Dia.	B Dia.	C Length	D Dia.	E Dia.	F Dia.	G Drill Dia.	H Dia.	I Length	J Dia.	K Dia.	L Dia.
1	Penn State	Majestic Squire	PKMAJSQBU	1	3/8" or 'V'	0.368		0.495	0.495	0.342	x	x	x	x	x	x
2	Craft Supply USA	Broker Twist BP	050-4446	1	'U'	0.358	3.00	0.425	0.425		x	x	x	x	x	x
3	Penn State	CEO Twist BP	PKCEOBU	1	'U'	0.358	3.00				x	x	x	x	x	x
4	Woodcraft	Wall Street (I) Twist BP (Old)	140101	1	'U'	0.358	3.00	0.425	0.425		x	x	x	x	x	x
5	Rockler	Cigar BP	24204	2	10 mm or 25/64"	0.385				0.357	10 mm or 25/64"	0.385		0.530	0.459	0.357
6	Rockler	Cigar .5mm Pencil	24204	2	10 mm or 25/64"	0.385				0.357	10 mm or 25/64"	0.385				0.357
7	PennState	Apollo Elite RB & FP	PKAPRBU	3	9/16"		1.69	0.625	0.625		12.5mm or 0.492	0.483	2.13	0.536	0.536	0.460
8	Craft Supply USA	Ligero RB	050-4055	3	17/32"		1.69	0.590	0.590		31/64"	0.470	1.97	0.536	0.536	0.450
9	Rockler	Jr Gentleman II RB	23571	3	31/64"	0.470				0.450	10.5mm or 13/32"	0.394				0.380
10	Arizona Silhouette	El Toro FP	50A	3	14mm or 35/64"	0.539		0.621	0.667	0.510	31/64"	0.472		0.609	0.550	0.447
11	Rockler	Panache	22907	3	12.5mm or 0.492	0.483		0.670	0.570	0.460	10.5mm or 13/32"	0.400		0.570	0.788	0.378
12	Arizona Silhouette	Perfect Fit Convertable BP	14B	2	11/32" or 'S'	0.338				0.316	'O' or 8mm	0.311				0.286
13	Arizona Silhouette	Perfect Fit Convertible .7mm Pencil	14B	2	11/32" or 'S'	0.338				0.316	'O' or 8mm	0.311				0.286
14	Berea	Perfect Fit Convertable BP	14B	2	11/32" or 'S'	0.338				0.316	'O' or 8mm	0.311				0.286
15	Berea	Perfect Fit Convertible .7mm Pencil	14B	2	11/32" or 'S'	0.338				0.316	'O' or 8mm	0.311				0.286
16	Arizona Silhouette	Flat Top Click Push Cap BP	4B	2	11mm	0.415				0.374	'O' or 8mm	0.311				0.286
17	Arizona Silhouette	Flat Top American Twist BP	1B	2	'O' or 8mm	0.311				0.286	'O' or 8mm	0.311				0.286
18	Arizona Silhouette	Flat Top American Twist .7mm Pencil	1B	2	'O' or 8mm	0.311				0.286	'O' or 8mm	0.311				0.286
19	Arizona Silhouette	Flat Top American Elite Twist BP	1B	2	'O' or 8mm	0.311				0.286	'O' or 8mm	0.311				0.286
20	Arizona Silhouette	Elegant American Twist Cap BP	15A or 17B	2	'O' or 8mm	0.311				0.286	'O' or 8mm	0.311				0.286
21	Berea	Elegant American Twist Cap BP	15A or 17B	2	'O' or 8mm	0.311				0.286	'O' or 8mm	0.311				0.286
22	Berea	Flat Top American Double Twist Hybrid BP	1B	2	'O' or 8mm	0.311				0.286	'O' or 8mm	0.311				0.286
23	Berea	Flat Top Click Push Cap BP	4B	2	11mm	0.415				0.374	'O' or 8mm	0.311				0.286
24	Berea	Flat Top Twist BP	1B	2	'O' or 8mm	0.311				0.286	'O' or 8mm	0.311				0.286
25	Berea	Flat Top Twist .7mm Pencil	1B	2	'O' or 8mm	0.311				0.286	'O' or 8mm	0.311				0.286
26	PennState	Classic Click BP	PKPARKBU2	2	11mm	0.415	2.11			0.374	'O' or 8mm	0.311	1.78			0.286
27	Arizona Silhouette	Streamline American Flat Top Screw Cap RB & FP	2B	3	3/8" or 'V'	0.368				0.342	3/8" or 'V'	0.368				0.342
28	Arizona Silhouette	Flat Top Screw Cap RB & FP	2B	3	3/8" or 'V'	0.368				0.342	3/8" or 'V'	0.368				0.342

# Only Pen Kits with Missing Dimensions - Bushings and Tubes

W Racinowski WRACINOWSKI at WI dot RR dot COM Revised 11-17-09



Using 3 place decimals please update this spreadsheet to provide "Caliper Measured" dimensions for yellow cells. Update fractional lengths to 2 place decimals only.



Pen #	Pen Kit Supplier	Pen Kit Description Grouped by Styling	Suppliers Bushing Set	Pen Style	Upper / Cap Tube			Upper / Cap Bushings			Lower / Body Tube			Lower / Body Bushing		
					A Drill Dia.	B Dia.	C Length	D Dia.	E Dia.	F Dia.	G Drill Dia.	H Dia.	I Length	J Dia.	K Dia.	L Dia.
29	Berea	Flat Top Snap Cap RB & FP	2B	3	3/8" or 'V'	0.368				0.342	3/8" or 'V'	0.368				0.342
30	Berea	Flat Top Screw Cap RB & FP	1B	3	'O' or 8mm	0.311				0.286	'O' or 8mm	0.311				0.286
31	Berea	Flat Top American Screw Cap RB & FP	2B	3	3/8" or 'V'	0.368				0.342	3/8" or 'V'	0.368				0.342
32	Berea	Flat Top Series 2000 Screw Cap RB & FP	2B	3	3/8" or 'V'	0.368				0.342	3/8" or 'V'	0.368				0.342
33	Arizona Silhouette	Round Top European Twist Cap .7mm Pencil	3B	2	'O' or 8mm	0.311				0.286	'O' or 8mm	0.311				0.286
34	Arizona Silhouette	Round Top European Twist BP	3B	2	'O' or 8mm	0.311				0.286	'O' or 8mm	0.311				0.286
35	Arizona Silhouette	7mm Round Top European Twist BP	10A	2	7mm or 'J'	0.268				x	7mm or 'J'	0.268				x
36	Arizona Silhouette	Streamline 7mm Round Top BP	18A	2	7mm or 'J'	0.268				x	7mm or 'J'	0.268				x
37	Berea	Round Top European Twist Cap .7mm Pencil	3B	2	'O' or 8mm	0.311				0.286	'O' or 8mm	0.311				0.286
38	Berea	Round Top European Twist BP	3B	2	'O' or 8mm	0.311				0.286	'O' or 8mm	0.311				0.286
39	PennState	Designer Twist BP	PKMONTBU	2	7mm or 'J'	0.268	2.13			x	7mm or 'J'	0.268	2.38			x
40	PennState	Designer Elite RB & FP	PKMONTBU3	3	PKMONTSD3		2.22				PKMONTSD3		2-61/64"			
41	Berea	Retro Twist Cap BP	9A	2	11/32" or 'S'	0.338				0.316	11/32" or 'S'	0.338				0.316
42	PennState	Executive Twist BP & .7mm Pencil	PKEXECBU	1	3/8" or 'V'	0.368	2.88			0.342	x	x	x	x	x	x
43	PennState	Workshop Sketch 5.6mm Pencil	PKSPCLBU	2	11mm	0.415		0.512	0.512	0.374	11mm	0.415		0.512	0.512	0.374
44	Rockler	Toolbox 5.6mm Pencil	26862	2	11mm	0.415				0.374	11mm	0.415				0.429
45	Rockler	Woodworkers 5.6mm Pencil	26397	1	10 mm or 25/64"	0.385				0.357	10 mm or 25/64"	0.385				0.357
46	Arizona Silhouette	Button Click BP	5A	2	11/32" or 'S'	0.338				0.316	11/32" or 'S'	0.338				0.316
47	Berea	Click BP	5A	2	11/32" or 'S'	0.338				0.316	11/32" or 'S'	0.338				0.316
48	Penn State	Click BP	PKBOWBU	2	'O' or 8mm	0.311				0.286	'O' or 8mm	0.311				0.286
49	Penn State	Slimline Pro Click BP & .7mm Pencil	PKPENXXBU	2	'O' or 8mm	0.311				0.286	'O' or 8mm	0.311				0.286
50	Woodcraft	Click BP	127767	2	'O' or 8mm	0.311				0.286	'O' or 8mm	0.311				0.286
51	Arizona Silhouette	Biscayne Flat Top BP	AZSB-14A	2	7mm or 'J'	0.268		0.347	0.434	x	7mm or 'J'	0.268		0.434	0.331	x
52	Arizona Silhouette	Streamline 7mm Flat Top BP	14A	2	7mm or 'J'	0.268				x	7mm or 'J'	0.268				x
53	Berea	Streamline BP	14A	2	7mm or 'J'	0.268				x	7mm or 'J'	0.268				x
54	Arizona Silhouette	Elegant American BP	15A or 17B	2	'O' or 8mm	0.311		0.400	0.470	0.286	'O' or 8mm	0.311		0.470	0.360	0.286