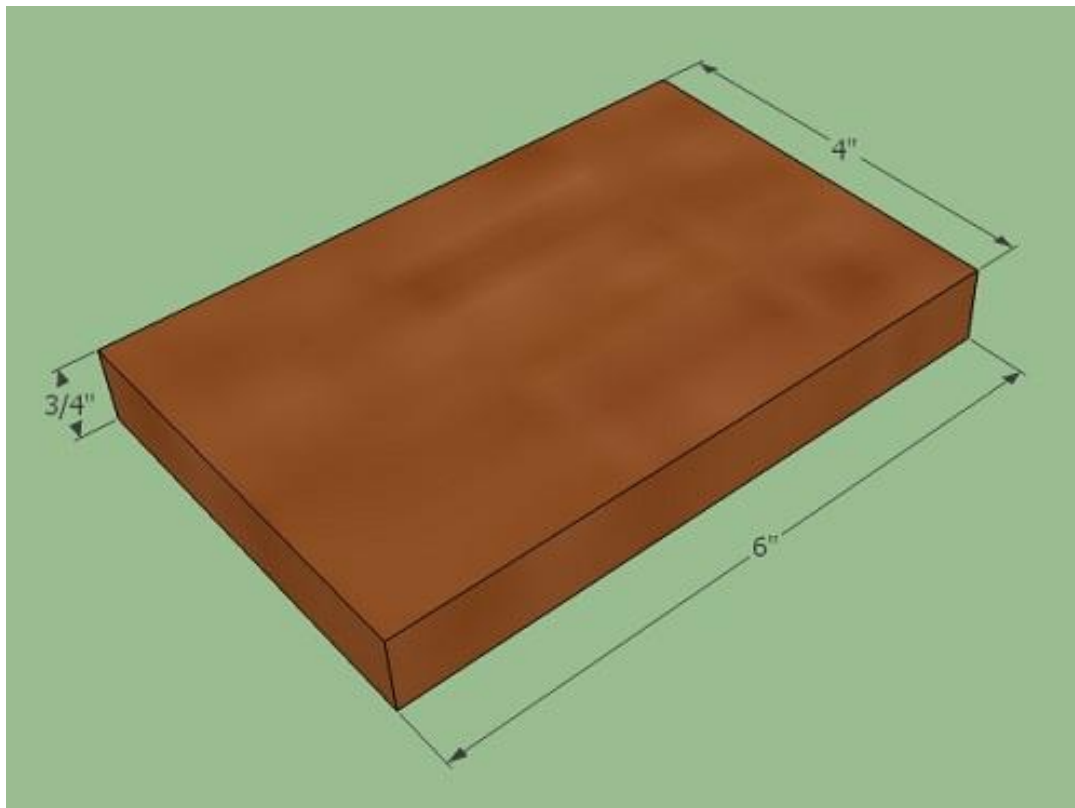


# *Pen Blank Squaring Jig*

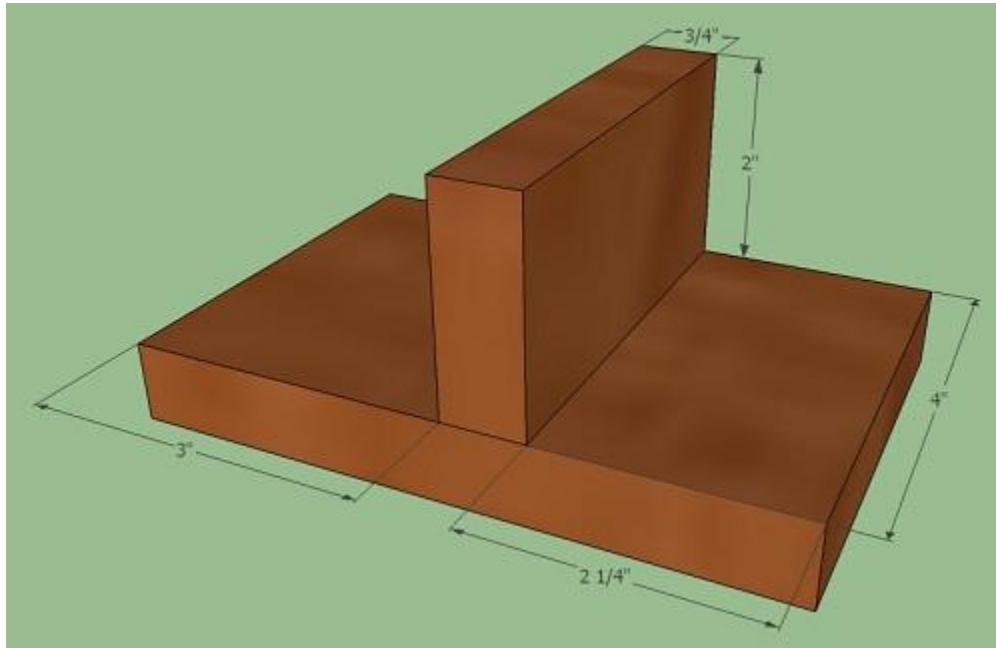
Square the ends of any pen blank regardless of tube diameter. Simply cut your blanks to length. Drill the correct diameter hole in the center of your blank. Glue your tube in the hole. After the glue sets, mount your blank on the jig. Slide the jig and blank across the sanding disc until flat. The end will be perfectly square every time.

Building the jig:

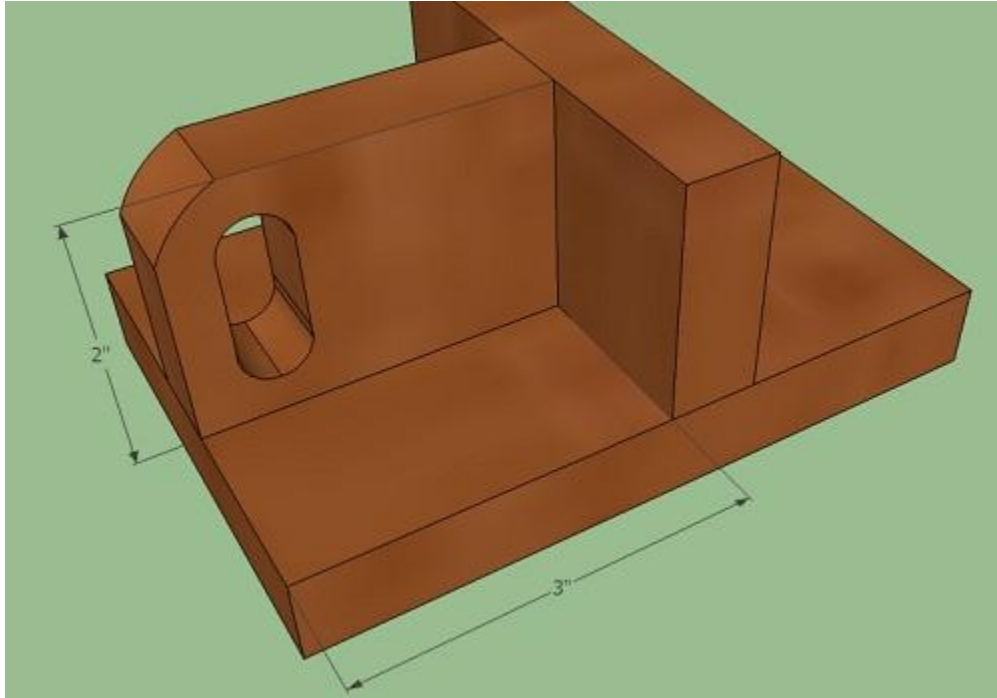
Start the jig by cutting the bottom plate of the jig measuring  $\frac{3}{4}$ "x4"x6".



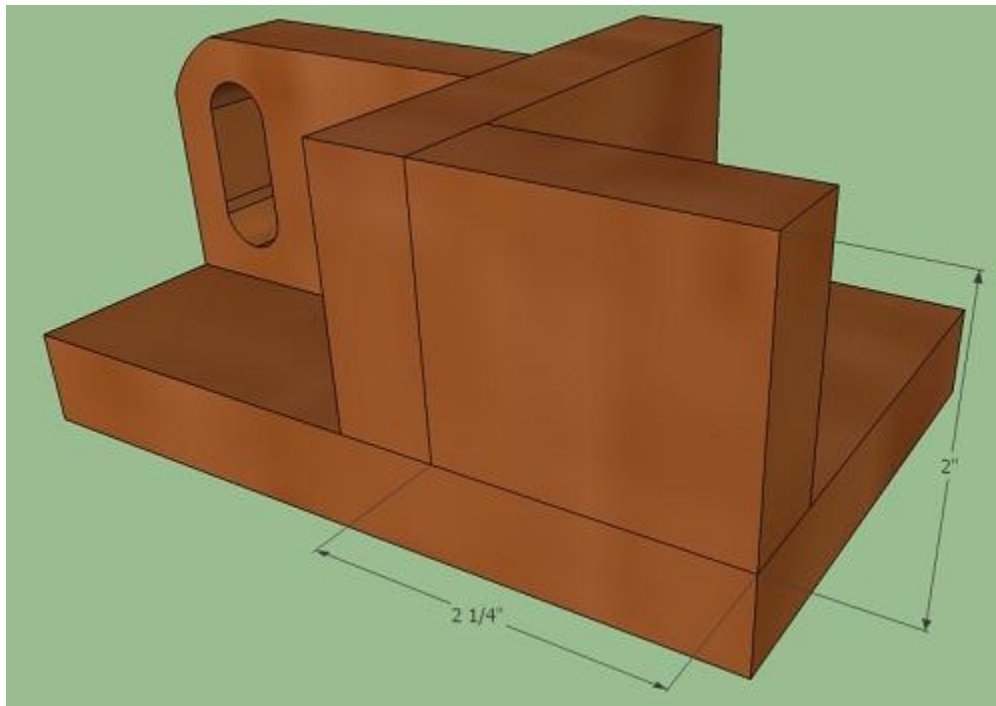
Next, create the center support by cutting a board measuring  $\frac{3}{4}$ "x2"x4". Using wood glue and screws, attach the center support to the bottom plate as shown. Pre drill through holes and recesses for the screw heads. Insert the screws through the bottom of the bottom plate.



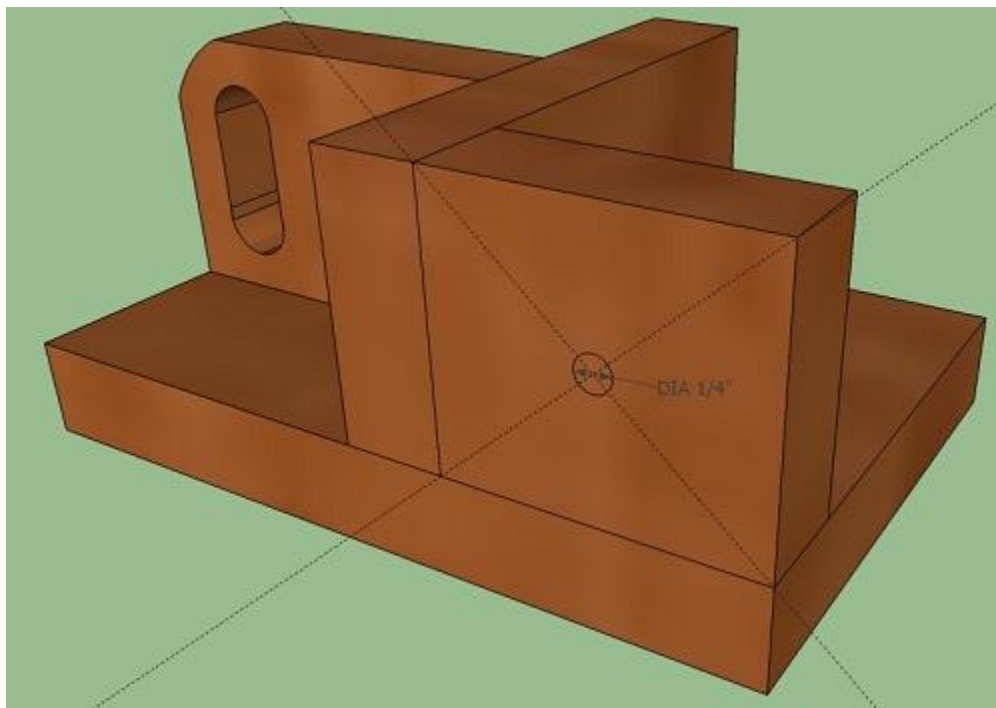
Create the handle from a piece of wood measuring  $\frac{3}{4}$ "x2"x3". Cut the hole for your fingers before attaching to the bottom plate and center support. Using glue on the matting surfaces, screw through the bottom plate and center support into the handle.



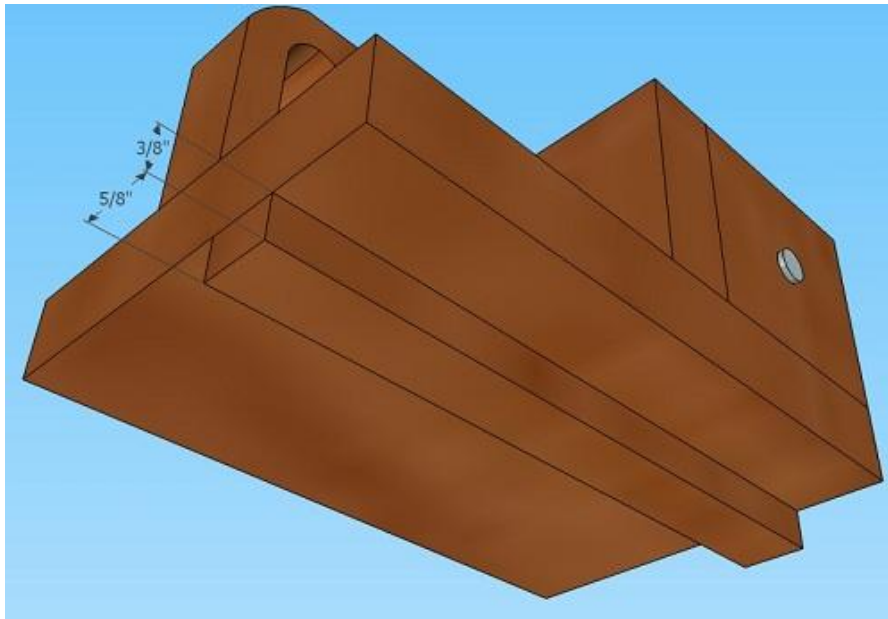
Next, cut the back support as shown. This part will measure  $\frac{3}{4}$ "x2"x2  $\frac{1}{4}$ ".



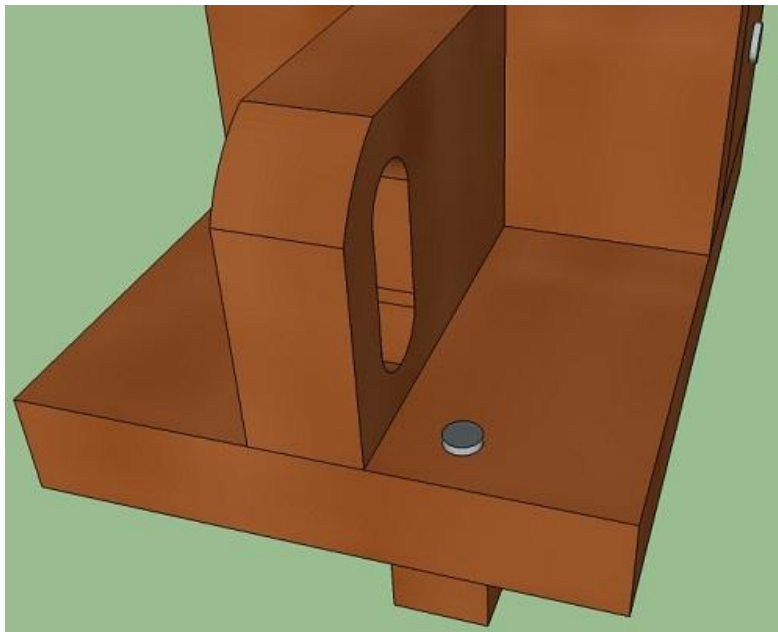
Before attaching the back support to the bottom plate and center support with glue and screws, drill a  $\frac{1}{4}$ " through hole for the blank centering bolt as shown below.



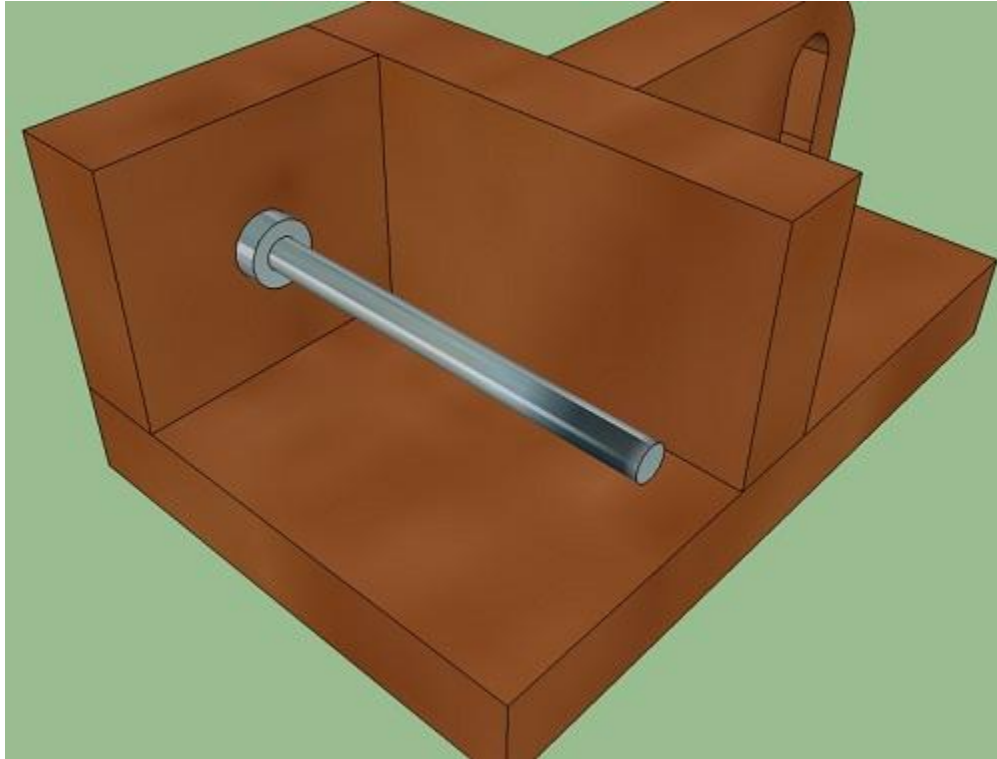
Next, create a slide to a width and thickness a little less than the groove on your sander. Mine measured  $\frac{5}{8}$ " wide,  $\frac{3}{8}$ " thick and 6" long.



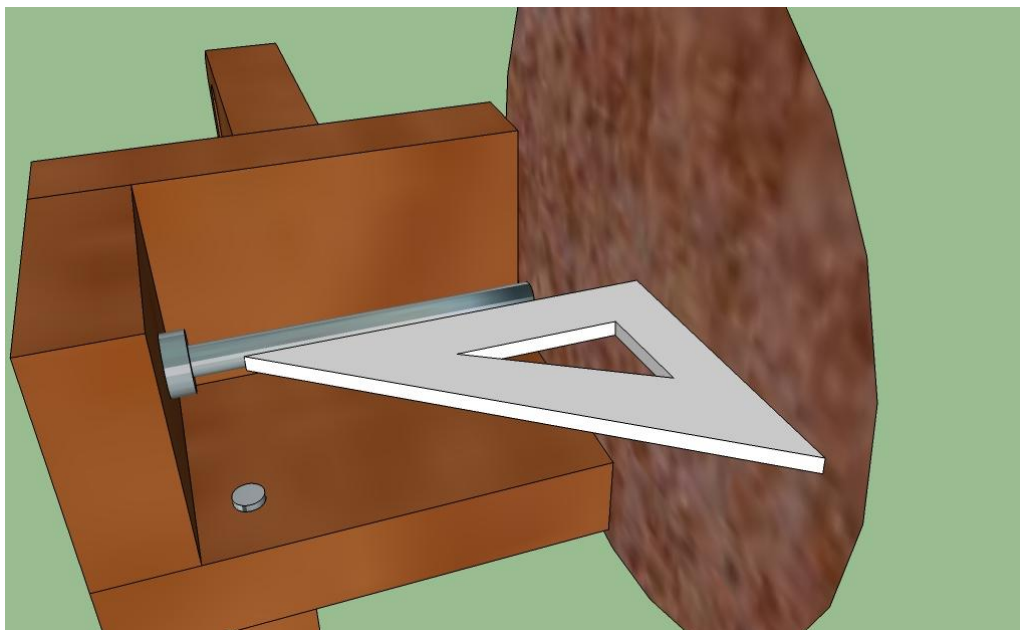
Place the slid in the groove on your sander and test the fit. You want it to fit snugly, but still be able to slide smoothly. With the slid still in the groove, place the jig on the sander as close to the sanding disc as possible without it actually touching. Drill a pilot hole through the bottom plate, near the handle, and into the slide. Use a screw to attach the bottom plate to the slide as shown below.



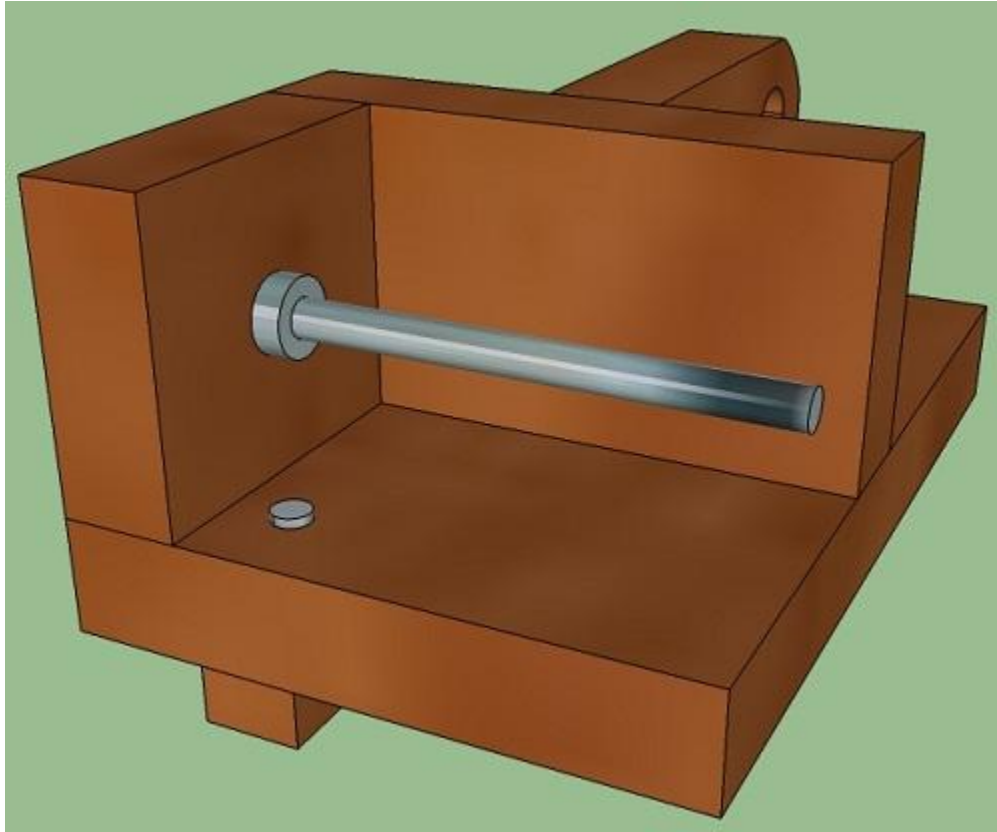
Next, insert the 1/4" bolt through the hole in the back support. Place a washer, lock washer, and a nut on the bolt. Tighten the nut securely to bolt locking the bolt to the back support.



Use a small square to true the bolt to the sanding disc.



Adjust the jig until the bolt is at 90 degrees to the sanding disc. Once you are happy with the angle, drill a pilot hole through the bottom plate and into the slide. Use a screw to secure the two pieces together, thereby locking in the 90 degrees between the bolt and sanding disc.



## To use the jig:

Cut and drill your blanks as usual. Glue the tubes into the blanks. Once the glue has had time to cure, mount your blank on the jig by sliding the tube over the bolt. Slide the jig and blank across the sanding disc until flat. The end will be perfectly square every time.



Feel free to use this information in any way that you see fit. Share this link with friends. Please do not sell this information. I offer it free for everyone. If this information was helpful, please show your support by visiting our website and leaving us a note. I will be adding many more free plans here on this site, so please stop back often.



Thanks for looking.

Please visit us WoodChux @ <http://rizaydog.webs.com/> for more free plans, information and wine stopper kits.