

## Oblique Holder Insert for Calligrapher's Oblique Holder

By Cathy Sue Hawkins

IAP name "CSue"

Many people who are "Pointed Pen Enthusiasts" or Calligraphers doing Copperplate or just people left handed find an Oblique holder for their nibs to be preferable. Many Oblique holders on the market limit the types of nibs used because of the shape of the Oblique Insert.

This Oblique Holder insert transforms a Dip Pen into an *adjustable* Oblique holder that takes a much wider range of nibs. Here's how:

I purchase this Artist's "Mouth Atomizer" from ASW (Art Supply Warehouse) or Jerry's Artarama that looks like this:



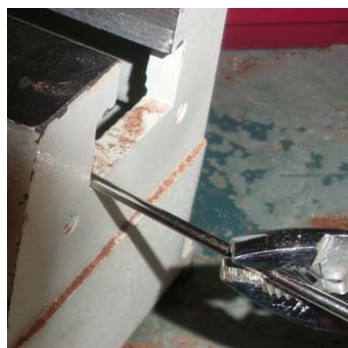
ASW Catalog # 425624

<http://www.aswexpress.com/art-supply/catalogs/0045181000000>

Jerry's Artarama Item # 45181

<http://www.jerrysartarama.com/Painting-Supplies/Atomizers>

1. Remove the tubes from each side of the Atomizer's hinge.  
*I use the bed of my lathe to help with this.*



2.

2. "Pop" the rivet that holds the two hinged sections of the atomizer together. *I do this by placing the remaining hinged section of the atomizer in my 4" vise with a waste block for support. Then drill through the rivet itself with 1/16<sup>th</sup> drill bit.*



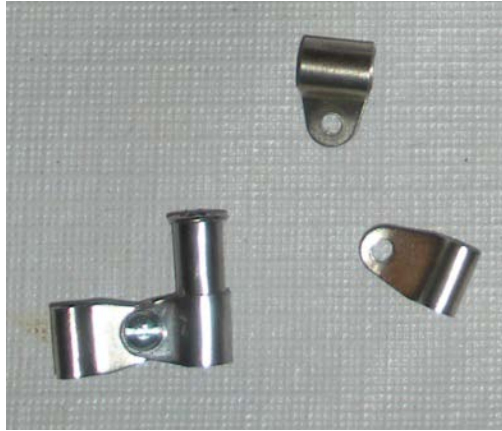
3. Separate the two sections of the hinge. These will be your "Oblique Insert" pieces.



4. Clean up the metal fragments from the holes in the wings of the hinged pieces.
5. Join the two halves of the hinged Oblique insert using a 1/16<sup>th</sup> inch screw and nut (4x40x3/8").



6. The wider of the two circles is then fitted with the standard Dip Pen **nib insert** as it is 1/4" diameter inside.



*At the time of this writing, the nib inserts can be found a **Stiles & Bates**, England. Occasionally someone in this group offers a "group buy" to defray costs from England to USA.*

7. To secure the Oblique insert into the nib end of the holder, I center the already turned and finished spindle/holder into my 4" vise between two v-shaped cut pieces of sugar pine that hold it leveled and in line with the drill bit. The sugar pine being a softer soft wood doesn't harm the holder.



8. Drill hole  $3/16^{\text{th}}$ " deep and add slit down side of the holder just a tad longer than the width of the smaller diameter's hinged "wing."
9. Using a tap hammer or soft mallet, carefully tap in the rounded area of the smaller diameter hinge side into the hole you drilled in the holder making sure to line up the winged part of the smaller diameter hinge line up with the slit cut on the side of the holder.

I put a drop or two of CA into the center of the hole in the center of hinge insert piece and let the holder set with nib end up till it dries.



10. Sand and finish the top surface where the insert was placed.



When a calligrapher writes using an oblique holder, the oblique holder here is adjusted with nib in so that the tip of the nib is directly in line with an imaginary straight line that can be drawn from nib tip to center base of pen. Fine adjustments can be made with needle nose pliers.

This holder can be "flipped" so that it works well for both right and left-handed people.

\* \* \* \*

Adaptations, of course, can be made in how you affix the insert to the pen holder itself. One friend of mine cuts that smaller hinged section in half, flattens it, puts that piece of steel into the holder and secures it with a small pin through and through.

I do hope this helps you find a new market in your line of pens.