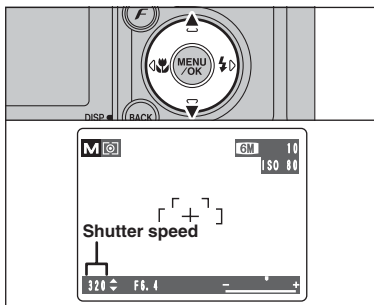


Set the Mode dial to "M".
Use Manual mode to set any shutter speed and aperture setting.



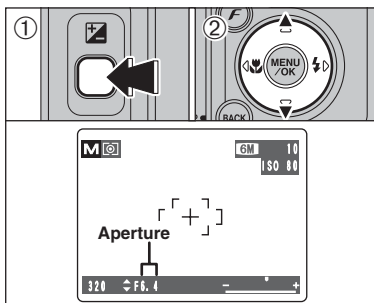
Setting the shutter speed

Press "▲" or "▼" to select the shutter speed.

● Shutter speed setting

3 sec. to 1/2000 sec. in 1/3 EV increments

- ⚙ See P.119 for information on EVs.
- ⚙ Use a tripod to avoid camera shake.
- ⚙ In shots with long exposures, noise (dots) may appear on the image.
- ⚙ If the shutter speed is set to a speed faster than 1/1000 sec., the image may appear dark even if the flash is used.



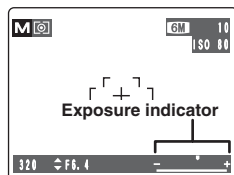
Setting the aperture

- ① Hold down the "⏏" button.
- ② Press "▲" or "▼" to select the aperture.

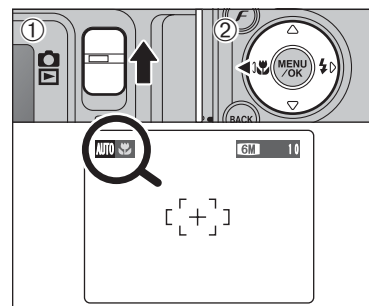
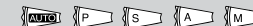
● Aperture settings

Wide-angle: F2.8 to F8 in 1/3 EV increments
Telephoto: F5.6 to F8 in 1/3 EV increments

◆ The exposure indicator ◆



Use the exposure indicator on the LCD monitor as a guide when setting the exposure.
When the brightness of the subject is outside the camera's brightness metering range, the indicator moves to the (+) end to show that the image will be overexposed (the (+) turns yellow) or to the (-) end to show that the image will be underexposed (the (-) turns yellow).



Select Macro mode to take close-up shots.

- ① Set the Mode switch to "M".
- ② Press the "⏏" (Macro) button. The "⏏" appears on the LCD monitor indicating that you can take close-up shots.
To cancel Macro mode, press the "⏏" (Macro) button again.

● Focal range

Approx. 7.5 cm to 80 cm (3.0 in. to 2.6 ft.) (wide-angle)

● Effective flash range

Approx. 30 cm to 80 cm (1.0 ft. to 2.6 ft.) (wide-angle)

- ⚙ Any of the following cancels Macro mode:
 - Changing the Mode dial setting
 - Turning the camera off
- ⚙ If the flash is too bright, use flash brightness adjustment (P.58).
- ⚙ Use a tripod to avoid camera shake when shooting in the dark (when "I" appears).
- ⚙ Once the LCD monitor is turned on and cannot be turned off.
- ⚙ Canceling Macro mode, the LCD monitor remains on.
- ⚙ Selecting AF (MULTI), the focusing position remains near the center of the LCD monitor.

When using the viewfinder to take a picture in Macro mode, the field visible through the viewfinder does not match the field actually photographed because the viewfinder and lens are in different positions. Use the LCD monitor to take pictures in Macro mode.