

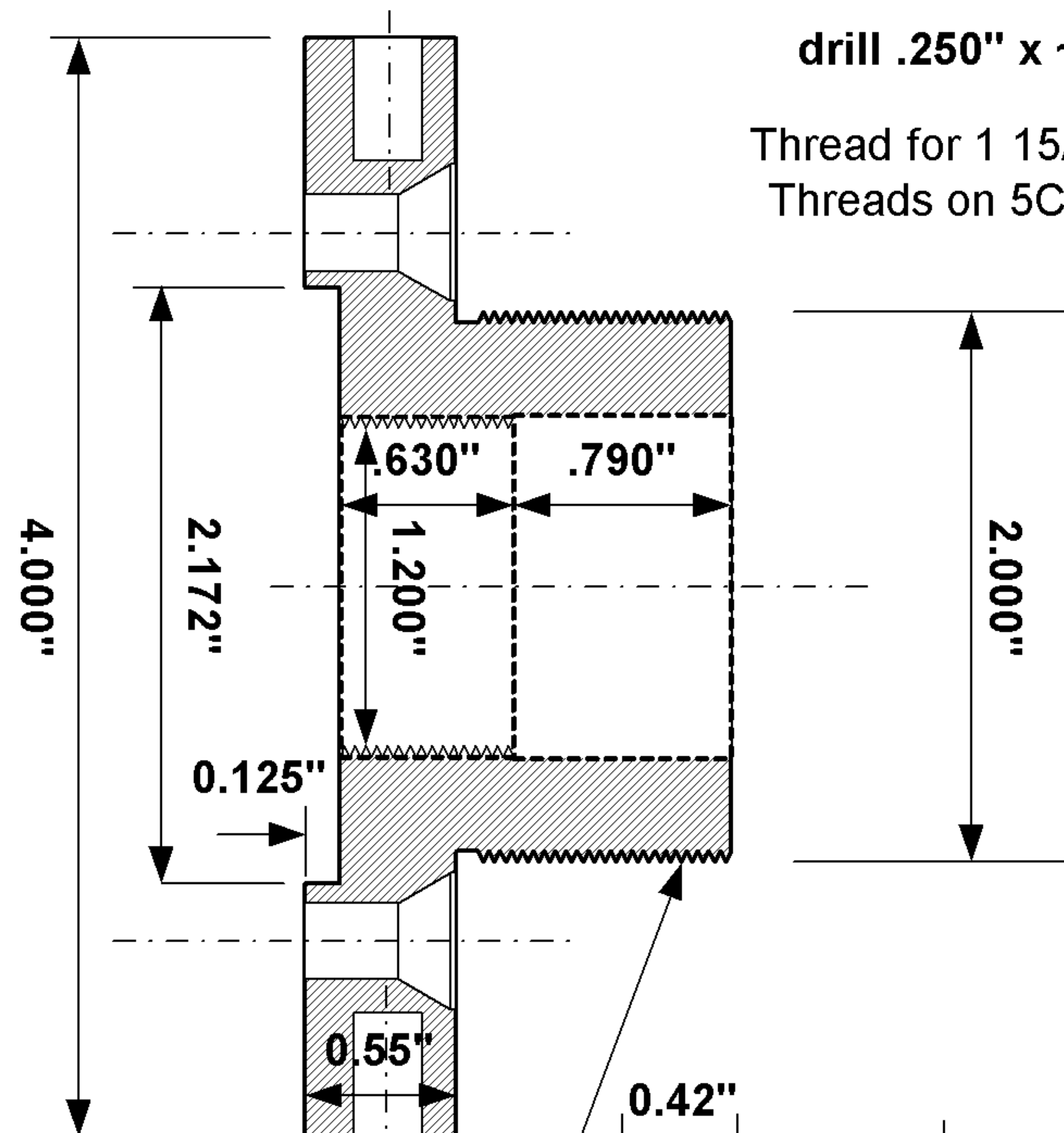
5C Collet Chuck *PROTOTYPE*

12/23/1999

Ty Hoeffler

drill .250" x ~.500

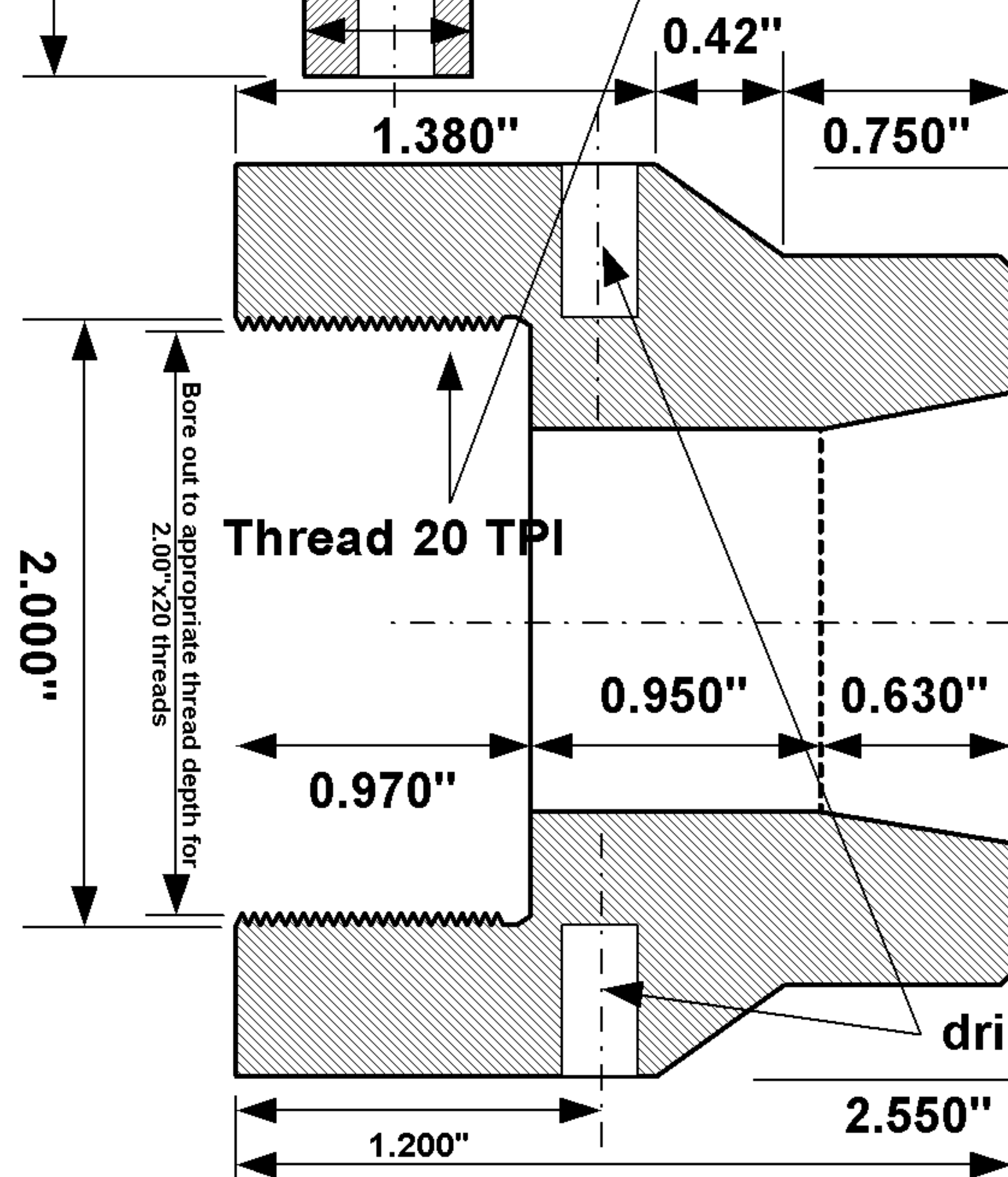
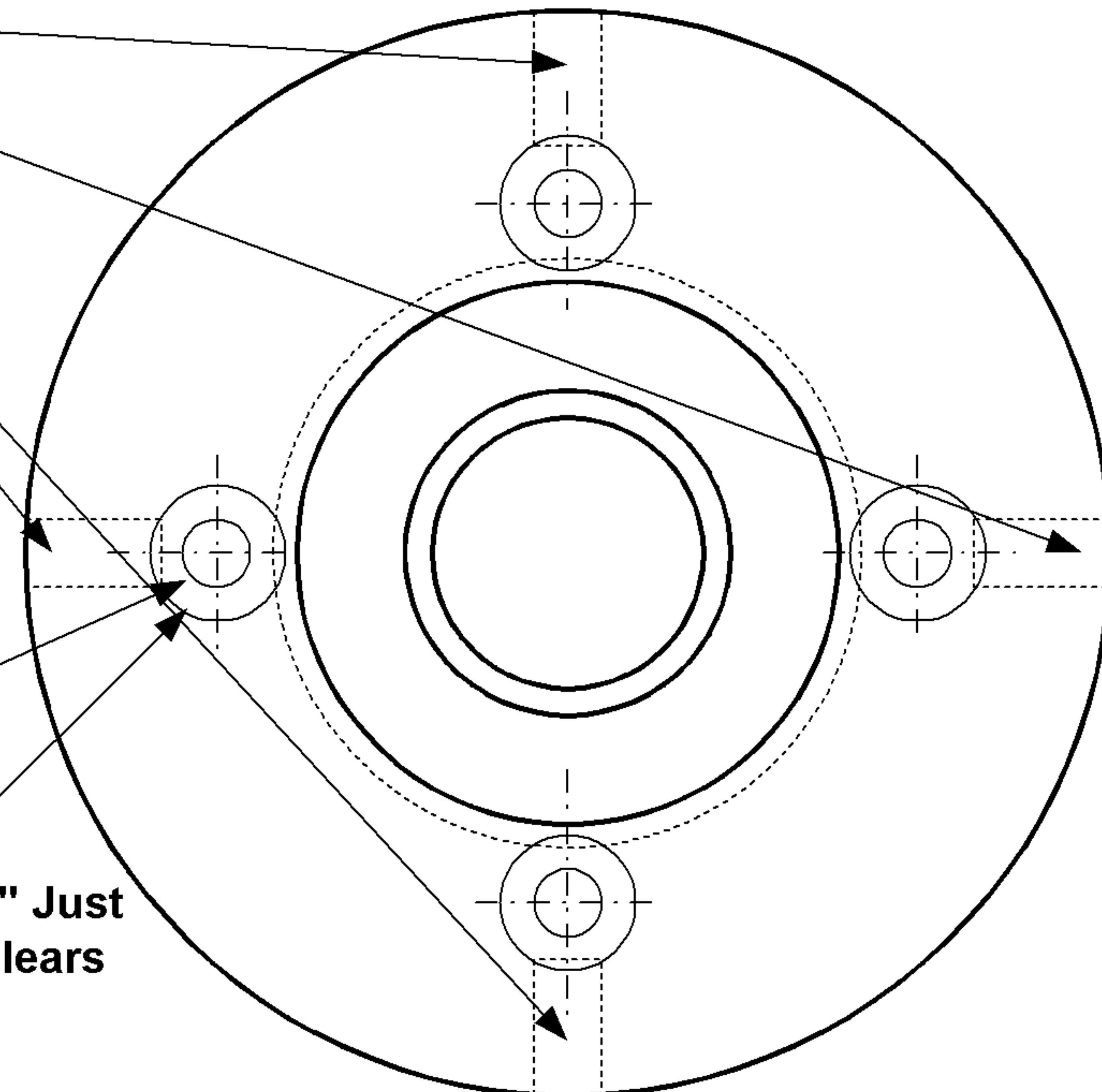
Thread for 1 15/64"x20
Threads on 5C Collet



2.000"

.250"R

Countersink 60° to .500" Just
deep enough so head clears
surface.



Thread 20 TPI

drill .250" x ~.500

